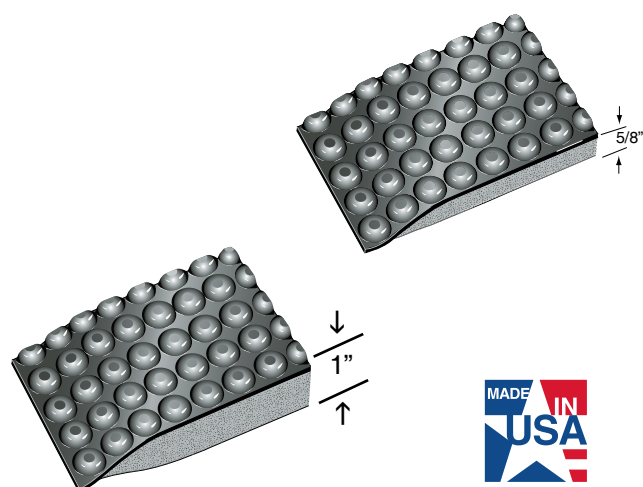




REFLEX CONDUCTIVE ANTI-FATIGUE MATS

- Reflex Anti-fatigue mats blend of resilient sponge base with a unique molded domed surface provide the simplest and most effective way to reduce standing worker fatigue and dissipate static electricity before it can be a problem.
- The sponge base encourages subtle movement of leg and calf muscles which in turn promote blood flow back to the heart.
- The domed surface of the mat provides a simple manipulation of areas of the feet. This in turn relieves tension and breaks up patterns or stress in other parts of the body to an amazing extent.
- Resistivity: Less than 10^6 OHMS, test method ESD-5.7.1 1994
- Reflex Anti-Fatigue mats are available in two styles. The Heavy Duty style is 5/8" thick and the Super Duty is a full 1" thick. Both styles are available in individual mats or full roll lengths of 24", 36" and 48" widths. All edges are beveled and sealed for safety and durability.
- Conductive matting should always be used with a ground cord.
- Use ground cord AA-107 to connect all ESD mats to a building ground or an electrical outlet, using the screw that secures the outlet cover as the attachment point.
- Patent D543765.



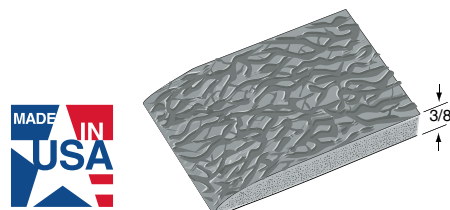
REFLEX ELECTRICALLY CONDUCTIVE ANTI-FATIGUE MATS			
For 1" mats, add "DS" to stock number			
Stock No.	Sizes	Weight Ea. 5/8"	Weight Ea. 1"
RLXC-2436	2' x 3'	9.0 lbs.	12.0 lbs.
RLXC-3660	3' x 5'	23.0 lbs.	30.0 lbs.
Custom Sizes-available in lengths up to 75 lin. Ft.			
Stock No.	Widths	Wt./Lin. Ft. 5/8"	Wt./Lin. Ft. 1"
RLXC-24	24"	3.0 lbs.	3.8 lbs.
RLXC-36	36"	5.0 lbs.	6.0 lbs.
RLXC-48	48"	6.7 lbs.	8.0 lbs.
RLXC-72	72" Seamed	10.0 lbs.	12.0 lbs.
RLXC-96	96" Seamed	13.4 lbs.	16.0 lbs.
Color: Black			

COMFORT STEP® ESD Static Dissipative Anti-Fatigue Mats



COMFORT STEP ESD STATIC DISSIPATIVE ANTI-FATIGUE MATS

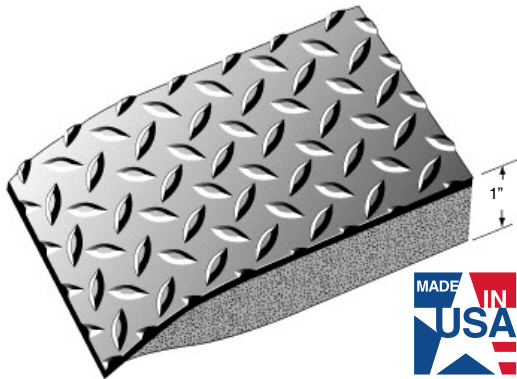
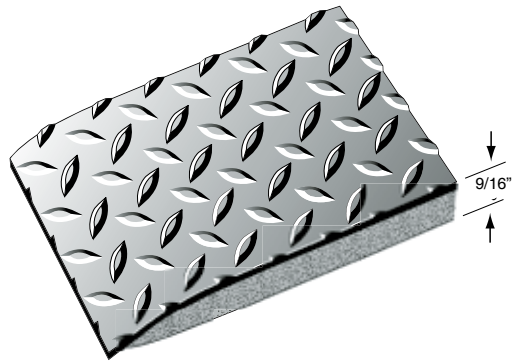
- Comfort Step ESD is a budget priced static dissipative sponge vinyl, anti-fatigue mat which prevents the accumulation of damaging static in environments where ESD protection is needed.
- Comfort Step ESD is a cross-linked vinyl-nitril resilient sponge. 3/8" overall thickness with pebble-textured top surface and beveled edges.
- Resistivity: Less than 10^9 OHMS, test method ESD-S7.1 1994.
- The surface of static dissipative matting should always be kept clean.



3/8" THICK STATIC DISSIPATIVE MATS		
Stock No.	Sizes	App. Weight
CSE-2436	24" x 36"	7.0 lbs.
CSE-3660	36" x 60"	13.0 lbs.
3/8" THICK STATIC DISSIPATIVE RUNNERS		
Stock No.	Sizes	App. Wt./Lin. Ft.
CSE-36	3' x 60'	2.7 lbs.
CSE-48	4' x 60'	3.6 lbs.
Color: Gray		



CONDUCTIVE DIAMOND™ Anti-Fatigue Mats



CONDUCTIVE DIAMOND PLATE ANTI-FATIGUE

- Disperse static electricity from an operator the moment they step on the mat and safely away from sensitive equipment.
- 5/32" thick electrically conductive diamond plate surface with a resilient closed cell polymeric sponge base.
- Your choice: 9/16" or 1" overall thickness with beveled edges.
- Resistivity: Less than 10^6 OHMS, test method ESD-S7.1 1994.
- Conductive matting should always be used with a ground cord, and the surface kept clean.
- Use ground cord AA-107 to connect all ESD mats to a building ground or an electrical outlet, using the screw that secures the outlet cover as the attachment point.

CONDUCTIVE DIAMOND PLATE ANTI-FATIGUE

For 1" mats, add "DS" to stock number

Stock No.	Sizes	Weight Ea. 9/16"	Weight Ea. 1"
ECD-2436TT	2' x 3'	9.0 lbs.	12.0 lbs.
ECD-3660TT	3' x 5'	23.0 lbs.	30.0 lbs.

Custom Sizes - available in lengths up to 75 lin. ft.

Stock No.	Width	Weight/Lin.Ft. 9/16"	Wt./Lin.Ft. 1"
ECD-36TT	36"	5.0 lbs.	6.0 lbs.
ECD-48TT	48"	6.7 lbs.	8.0 lbs.
ECD-72TT	72" Seamed	10.0 lbs.	12.0 lbs.
ECD-96TT	96" Seamed	13.4 lbs.	16.0 lbs.

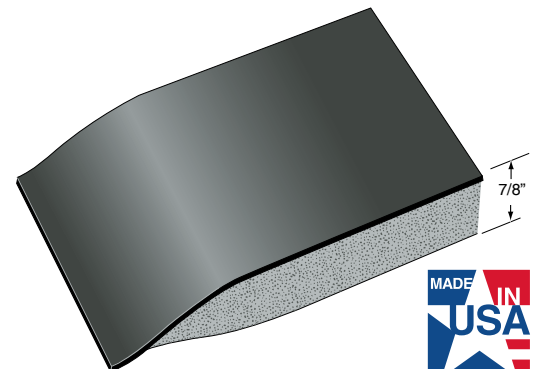
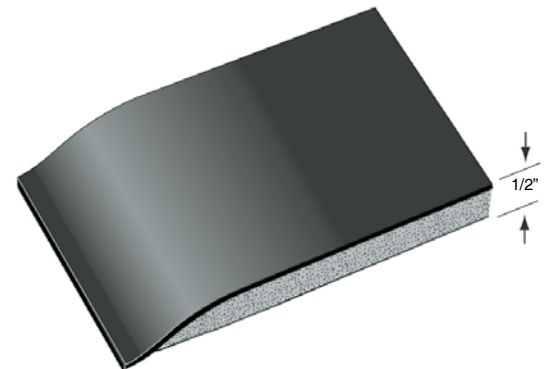
Color: Black. 1" Thick/Double Sponge Option. (DS)



CONDUCTIVE SMOOTH TOP™ Anti-Fatigue Mats

CONDUCTIVE SMOOTH TOP ANTI-FATIGUE

- Prevent the accumulation of static electricity by quickly draining it from operators and eliminate the hazards of data loss or the damaging of micro-circuitry equipment.
- 1/8" thick conductive smooth surface with a resilient closed cell polymeric sponge base.
- Your choice: 1/2" or 7/8" overall thickness with beveled edges.
- Resistivity: Less than 10^6 OHMS, test method ESD-S7.1 1994.
- Conductive matting should always be used with a ground cord, and the surface kept clean.
- Use ground cord AA-107 to connect all ESD mats to a building ground or an electrical outlet, using the screw that secures the outlet cover as the attachment point.



CONDUCTIVE SMOOTH TOP ANTI-FATIGUE

For 7/8" mats, add "DS" to stock number

Stock No.	Sizes	Weight Ea. 1/2"	Weight Ea. 7/8"
CS-2436TT	2' x 3'	9.0 lbs.	12.0 lbs.
CS-3660TT	3' x 5'	23.0 lbs.	30.0 lbs.

Custom Sizes - available in lengths up to 75 lin. Ft.

Stock No.	Widths	Wt./Lin. Ft. 1/2"	Wt./Lin. Ft. 7/8"
CS-36TT	36"	4.5 lbs.	6.0 lbs.
CS-48TT	48"	6.0 lbs.	8.0 lbs.
CS-72TT	72" Seamed	9.0 lbs.	12.0 lbs.
CS-96TT	96" Seamed	12.0 lbs.	16.0 lbs.

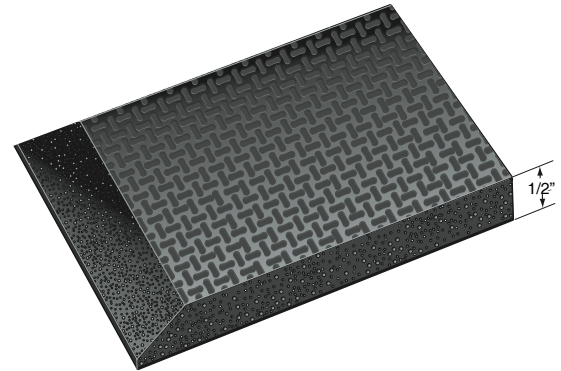
Color: Black Only 7/8" Thick/Double Sponge (DS)

POLARIS DISSIPATIVE SPONGE Anti-Fatigue Mats



POLARIS STATIC DISSIPATIVE SPONGE ANTI-FATIGUE

- The Polaris advantage: "Top to Bottom" static dissipative properties at less than 10^7 OHMS. Ground cords are an option when used on a properly ground floor.
- 1/2" thick closed-cell polymeric sponge PVC/NBR - resilient, 25% compression deflection (psi) ASTM D 1056 - 5.0-9.0.
- Textured both sides.
- Provides the combination of reliable long-term protection from static discharge and the simple effective way to reduce standing worker fatigue.
- Standard and custom sizes available, all edges beveled, lay-flat formulation.



POLARIS STATIC DISSIPATIVE SPONGE ANTI-FATIGUE		
Stock No.	Sizes	Weight Ea.
PC-2436	2' x 3'	9.0 lbs.
PC-3660	3' x 5'	23.0 lbs.
Custom Sizes -available in lengths up to 75 lin. Ft.		
Stock No.	Widths	Wt./Lin. Ft.
PC-36	36"	4.5 lbs.
Color: Black Only. 1/2" Thick.		

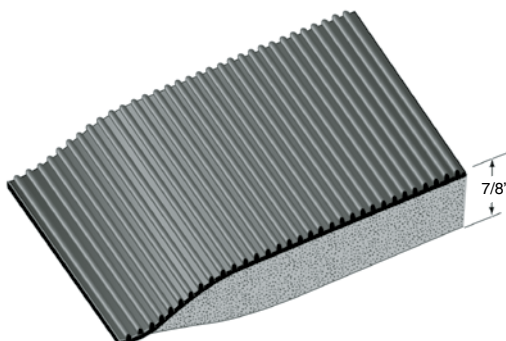
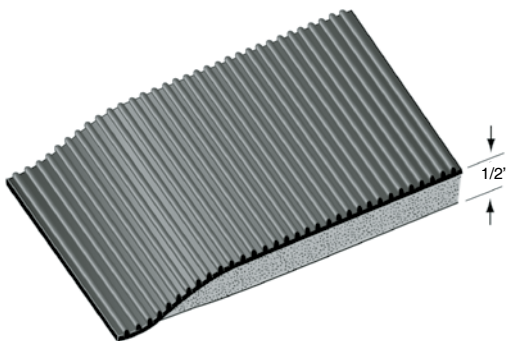


STATIC DISSIPATIVE CORRUGATED™ Anti-Fatigue Mats

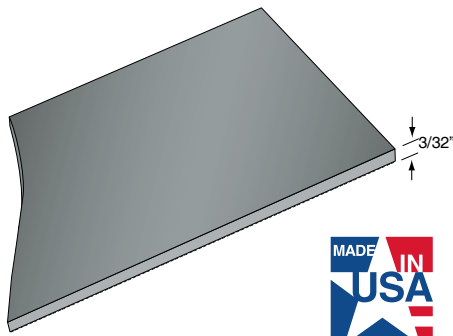
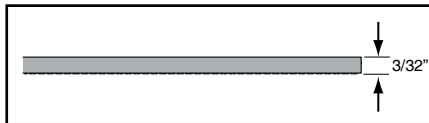


STATIC DISSIPATIVE CORRUGATED ANTI-FATIGUE

- Drain harmful static electricity from personnel, safeguard sensitive electronic equipment.
- 1/8" thick static dissipative corrugated surface with a resilient closed cell polymeric sponge base.
- Your choice: 1/2" or 7/8" overall thickness with beveled edges.
- Resistivity: Less than 10^7 OHMS, test method ESD-S7.1 1994.
- Static dissipative matting should always be used with a ground cord.
- Use ground cord AA-107 to connect all ESD mats to a building ground or an electrical outlet, using the screw that secures the outlet cover as the attachment point.



STATIC DISSIPATIVE CORRUGATED ANTI-FATIGUE			
For 7/8" mats, add "DS" to stock number			
Stock No.	Sizes	Weight Ea. 1/2"	Weight Ea. 7/8"
SDC-2436TT	2' x 3'	9.0 lbs.	12.0 lbs.
SDC-3660TT	3' x 5'	23.0 lbs.	30.0 lbs.
Custom Sizes -available in lengths up to 75 lin. Ft.			
Stock No.	Widths	Wt./Lin. Ft. 1/2"	Wt./Lin. Ft. 7/8"
SDC-36TT	36"	4.5 lbs.	6.0 lbs.
SDC-72TT	72" Seamed	9.0 lbs.	12.0 lbs.
Color: Black Only		7/8" Thick/Double Sponge (DS)	

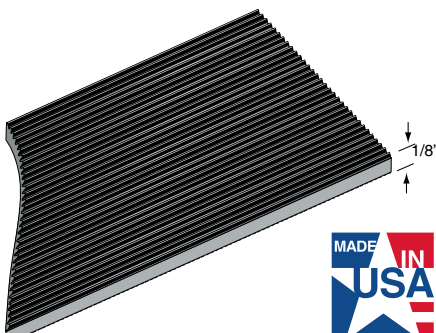
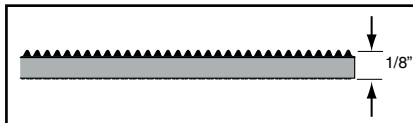


CONDUCTIVE SMOOTH TOP WORK SURFACE AND RUNNER

- 3/32" thick conductive smooth surface.
- Resistivity: Less than 10^6 OHMS, test method ESD-S7.1 1994
- Conductive matting should always be used with a ground cord, and the surface kept clean.

CONDUCTIVE SMOOTH TOP

Stock No.	Sizes	Weight/Lin. Ft.
CS36	3/32" x 36" x 75'	2.70 lbs.
CS48	3/32" x 48" x 75'	3.43 lbs.
Cut lengths available up to 75' ft.		
Color: Black. 3/32" Thick.		

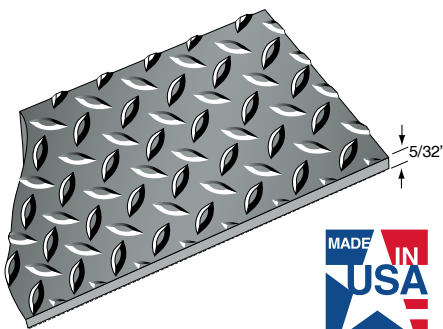
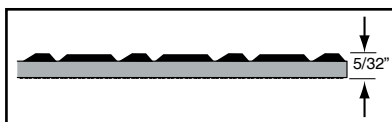


STATIC DISSIPATIVE CORRUGATED RUNNER

- 1/8" thick static dissipative, corrugated surface.
- Resistivity: Less than 10^7 OHMS, test method ESD-S7.1 1994
- Static dissipative matting should always be used with a ground cord.

STATIC DISSIPATIVE CORRUGATED RUNNER

Stock No.	Sizes	Weight/Lin. Ft.
SDC36	1/8" x 36" x 75'	2.23 lbs.
Cut lengths available up to 75' ft.		
Color: Black. 1/8" Thick.		



CONDUCTIVE DIAMOND PLATE RUNNER

- Disperse static electricity from an operator the moment they step on the mat and safely away from sensitive equipment.
- 5/32" thick electrically conductive diamond plate surface.
- Resistivity: Less than 10^6 OHMS, test method ESD-S7.1 1994.
- Conductive matting should always be used with a ground cord, and the surface kept clean.

CONDUCTIVE DIAMOND PLATE RUNNER

Stock No.	Size	Weight/Lin.Ft.
ECD36	5/32" x 36" x 75'	2.70 lbs.
ECD48	5/32" x 48" x 75'	3.43 lbs.
Cut lengths available up to 75 ft.		
Color: Black. 5/32" Thick.		



CORRUGATED RUNNER

- Deep V-groove liner pattern, primarily for non-slip applications.
- Also provides floor protection for high traffic areas.
- Helps remove dirt and mud from shoes with only routine maintenance using a broom.

CORRUGATED RUNNER MATTING

Stock No.	Sizes	Wt./Ln. Ft.
1CV24	1/8" x 24" x 105'	1.50 lbs.
1CV36	1/8" x 36" x 105'	2.23 lbs.
1CV48	1/8" x 48" x 105'	2.86 lbs.
1CV72	1/8" x 72" x 105'	4.46 lbs.
Color: Black. 1/8" Thick.		
Stock No.	Sizes	Wt./Ln. Ft.
2CV36	3/16" x 36" x 75'	4.00 lbs.
2CV48 Black only	3/16" x 48" x 75'	5.33 lbs.
Color: Black, Marine Blue, Orange. 3/16" Thick.		
Stock No.	Sizes	Wt./Ln. Ft.
3CV24	1/4" x 24" x 75'	3.66 lbs.
3CV36	1/4" x 36" x 75'	5.33 lbs.
3CV48	1/4" x 48" x 75'	6.66 lbs.
Color: Black. 1/4" Thick.		



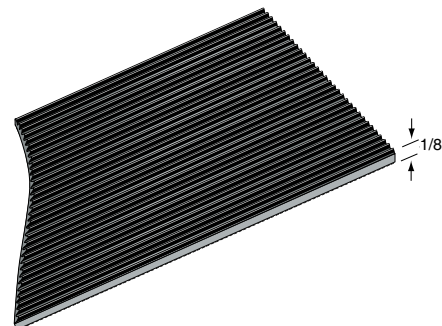
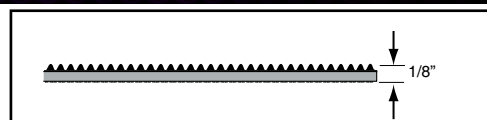
Black



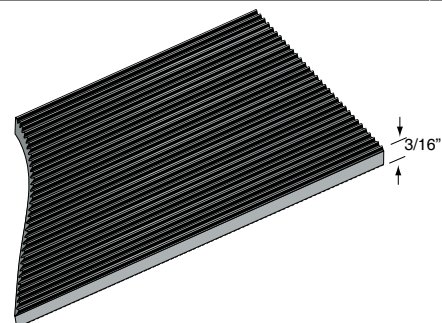
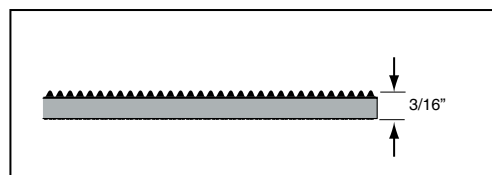
Orange (3/16" only)



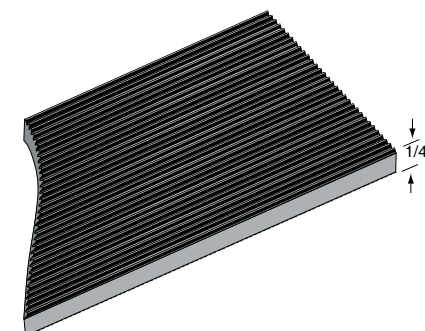
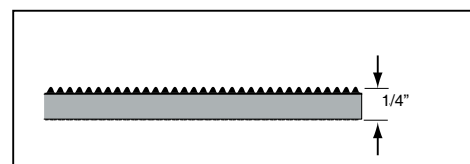
Marine Blue (3/16" only)



- **1/8" thick:** Medium duty corrugated, highly versatile, economical and easily cut to size.



- **3/16" thick:** Heavy duty corrugated, the lightness and flexibility of regular corrugated, but will deliver longer life. Marine blue and orange colors available.

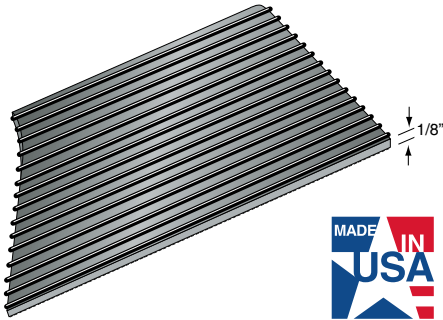
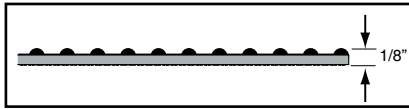


- **1/4" thick:** Super duty corrugated: this double-thickness matting provides dependable and long-lasting service in severe wear areas.





VINYL RUNNERS



EASY KLEEN RIB RUNNER

- Vinyl Easy Kleen is a durable vinyl with a rounded, ribbed profile.
- Provides exceptional wear and is resistant to most acids and chemicals.
- Meets Flammability Test requirements of Motor Vehicle Safety Standard No. 302 (49 CFR 571.302). Stain and abrasion resistant.

EASY KLEEN RIB RUNNER

Stock No.	Sizes	Wt./Ln.ft.
EK24	1/8" x 24" x 105'	1.50 lbs.
EK36	1/8" x 36" x 105'	2.20 lbs.
EK48	1/8" x 48" x 105'	2.60 lbs.
EK60(B)	1/8" x 60" x 105'	3.20 lbs.
EK36(W)	1/8" x 36" x 105'	2.20 lbs.

Colors: Black, Gray.
(60" Black only, White 36" only.) 1/8" Thick.

SPIKE RESISTANT VINYL EASY KLEEN

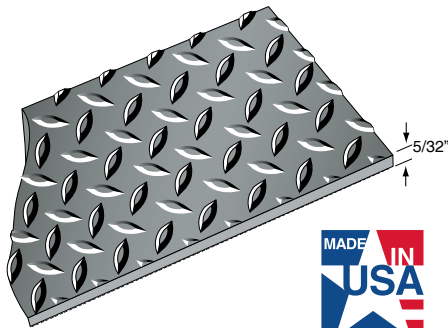
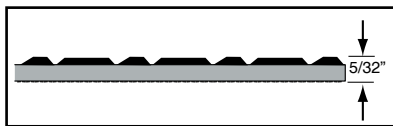
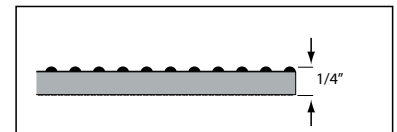
- This spike-resistant matting is ideal for golf course and/or locker room use.
- 1/4" thick.

SPIKE PROOF VINYL EASY KLEEN

STOCK NO.	SIZES	WT./LN.FT.
EKS24	1/4" x 24" x 75'	3.33 lbs.
EKS36	1/4" x 36" x 75'	4.66 lbs.

Colors: Black, Brown, Green.
(24" Black only.) 1/4" Thick.

SPIKE RESISTANT
VINYL EASY KLEEN,
Vinyl Runner 1/4"



DIAMOND PLATE RUNNER

- This vinyl diamond plate is a uniquely engineered, deeply-embossed, "steel-deck" designed matting with embossed anti-skid backing.
- Diamond plate design offers exceptional wear in heavy traffic areas.
- Resists most oils, industrial chemicals, beverages and household chemicals.
- Diamond plate meets Flammability Test requirements of Motor Vehicle Safety Standard No. 302 (49 CFR 571.302).

DIAMOND DECKPLATE RUNNER

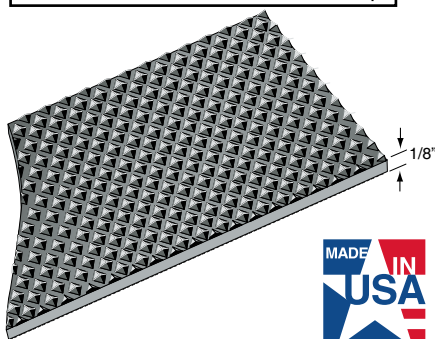
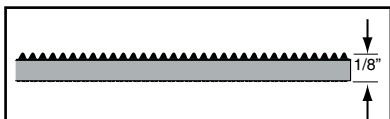
Stock No.	Sizes	Wt./Ln.Ft.
DV36	5/32" x 36" x 75'	2.70 lbs.
DV48	5/32" x 48" x 75'	3.43 lbs.
DV60	5/32" x 60" x 75'	4.29 lbs.

Colors: Black, Gray. 60" Black only. 5/32" Thick.

DIAMOND DECKPLATE – SAFETY BORDER

Stock No.	Sizes	Wt./Ln.Ft.
DV24Y	5/32" x 24" x 75'	1.70 lbs.
DV36Y	5/32" x 36" x 75'	2.70 lbs.
DV48Y	5/32" x 48" x 75'	3.43 lbs.
DV60Y	5/32" x 60" x 75'	4.29 lbs.

Colors: Black/Yellow, Gray/Yellow. 60" Black/Yellow only. 5/32" Thick.



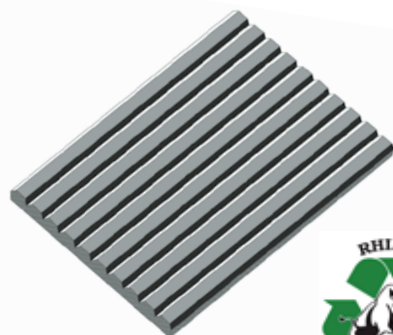
PYRAMID RUNNER

- This non-directional 3/16" pyramid pattern features an extremely slip-resistant surface, provides sure footing for safety and protects floors.
- Embossed backing for skid resistance.
- Resists most oils, greases, and fats.
- Meets Flammability Test requirements of Motor Vehicle Safety Standard No. 302 (49 CFR 571.302).

PYRAMID RUNNER

Stock No.	Sizes	Wt./Ln.Ft.
VP36	1/8" x 36" x 105'	2.60 lbs.
VP48	1/8" x 48" x 105'	3.50 lbs.

Colors: 36" Wide Black only.
Colors: 48" Wide Black, Burgundy, Light Gray, Dark Gray, Brown, Tan, Navy Blue, Forest Green. 1/8" Thick.

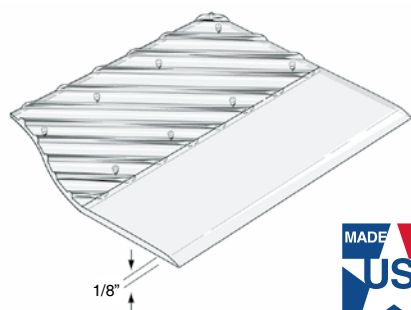
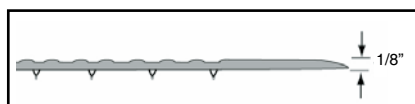


TRITAN® PERMA WALK

- Here's a mat designed with one quarter inch wide flat corrugations running parallel to the length of the mat for easy sweeping and cleaning.
- Reduces slipping and falls in heavy traffic areas, aisles, locker rooms and assembly areas.
- Built-in resistance to constant abuse, a characteristic of Tritan construction, assures you years of service (Products from regrind may have an occasional blemish).

TRITAN PERMA WALK 1/4" THICK

Stock No.	Sizes	Wt./Lin. Ft.
TPW36	1/4" x 36" x 75'	4.7 lbs.
TPW48	1/4" x 48" x 75'	6.3 lbs.
Color: Black. 1/4" Thick,		

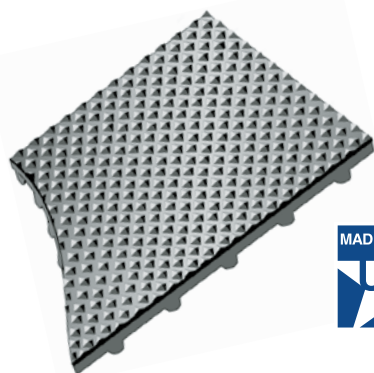
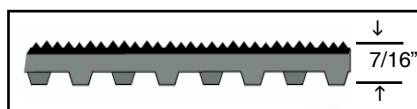


TRANSPARENT GRIPPER BACK RUNNER

- Attractive, tough, transparent carpet protection.
- Stops carpetwear, prevents soilings, lets carpet beauty show through 100% virgin vinyl. Resists puncturing... virtually indestructible.
- Nonskid ribbed surface...cleans easily...3" tapered edge helps avoid tripping.
- Stays put on loop pile carpet.
- Wherever commercial loop pile carpeting needs protection from abrasive wear of concentrated foot-traffic lanes.

TRANSPARENT GRIPPER BACK RUNNER

Stock No.	Size	Wt./Lin. Ft.
27GBR	1/8" x 27" x 60'	.85 lbs.
36GBR	1/8" x 36" x 60'	1.45 lbs.
48GBR	1/8" x 48" x 60'	1.90 lbs.
Color: Clear. 1/8" Thick.		



PYRAMID TOP-KNOB BACK RECESS MAT

- Pyramid Top-Knob Back was designed to provide a low cost recess mat in airports, schools and public buildings where efficiency and economy are top priority.
- Pyramid Top-Knob Back is made from highly resilient recycled PVC compound with a molded non-directional pattern consisting of sharply pointed pyramids covering the entire surface, offering traction, durability and ease of cleaning for many years even under the heaviest traffic conditions.
- Pyramid pattern is 1/16" deep and spaced 1/4" point to point. Overall thickness is 7/16". Custom lengths or full rolls up to 30". Edges are square for recess or can be beveled for surface use.

PYRAMID TOP-KNOB BACK 7/16" THICK

Stock No.	Sizes	Wt./Lin. Ft.
PTKB-36	36" x 25'	4.7 lbs.
PTKB-48	48" x 25'	6.3 lbs.
PTKB-72	72" x 25'	9.4 lbs.
PTKB-96	96" x 25'	12.5 lbs.

Colors: Burgundy, Black, Lt. Gray, Dk. Gray, Brown, Tan, Navy Blue, Forest Green. Add "SB" for smooth back. 7/16" Thick.



BLACK

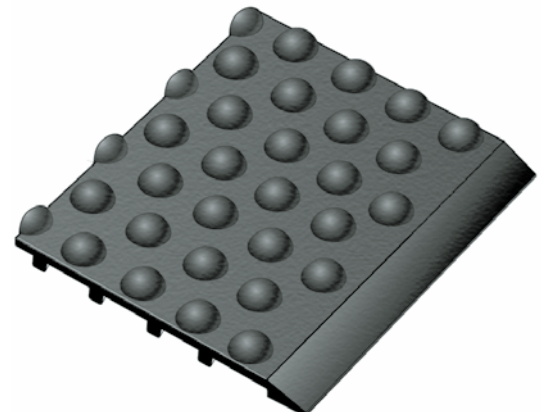


LT. GRAY



TRITAN® ULTRA-DOME® ROLLS ANTI-FATIGUE

- Ultra-Dome Rolls are manufactured from our Tritan formulation making them “almost indestructible.” A combination of recycled nylon fibers and rubber blended to manufacture a mat that is oblivious to extreme conditions.
- The Ultra-Dome advantage is the distance the domed surface provides between slag/sparks/hot metal shavings and the standing worker’s shoe soles.
- Ultra-Dome anti-fatigue mat’s combination of domed surface with evenly spaced compression knobs on the underside, provide a resilient and active surface with excellent anti-slip characteristics.
- The Tritan formulation used to manufacture Ultra-Dome stands up to inorganic materials such as caustic soda as well as nitric, sulfuric and hydrochloric acids. It stands up to organic materials such as methyl alcohol, mineral oil, and ethylene glycol.
- Ultra-Dome Rolls suffer no signs of deterioration at 400 degrees Fahrenheit, no fractures or visible cracks due to cold temperature, -45 degrees Fahrenheit.
- Ultra-Dome Rolls with their Tritan formulation are priced to compete and meet everybody’s budget.
- Ultra-Dome is available in full 60 foot rolls or cut lengths.



TRITAN ULTRA-DOME ANTI-FATIGUE CUT ROLLS

Stock No.	Size	Weight Ea.
UDR3660	36" x 60"	23.0 lbs.
UDR310	36" x 120"	45.0 lbs.

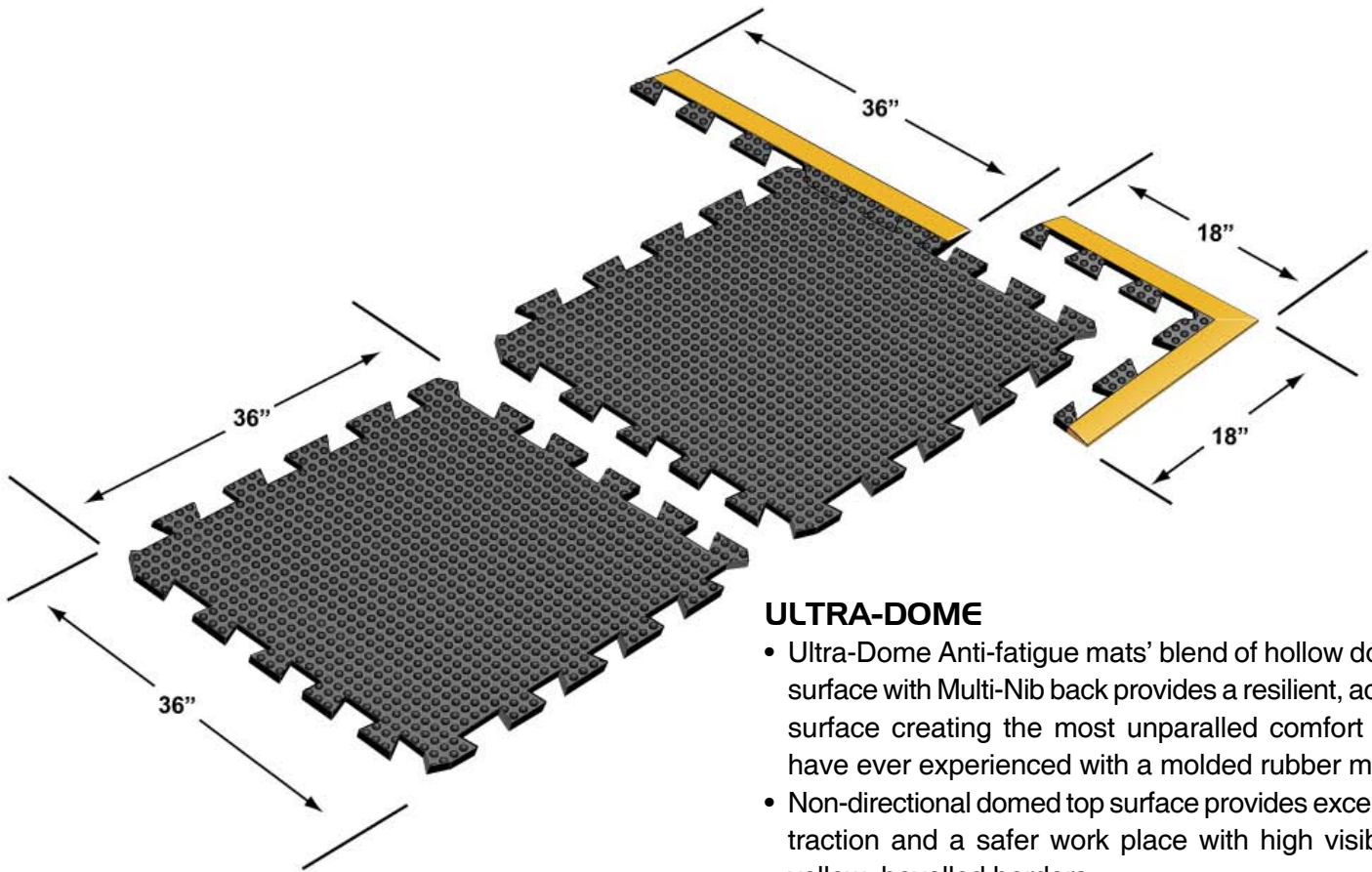
TRITAN ULTRA-DOME ANTI-FATIGUE ROLLS

Stock No.	Size	App. Wt./Lin.ft.
UDR36	3' x 60'	4.5 lbs.

Colors: Solid Black only. 5/8" Thick



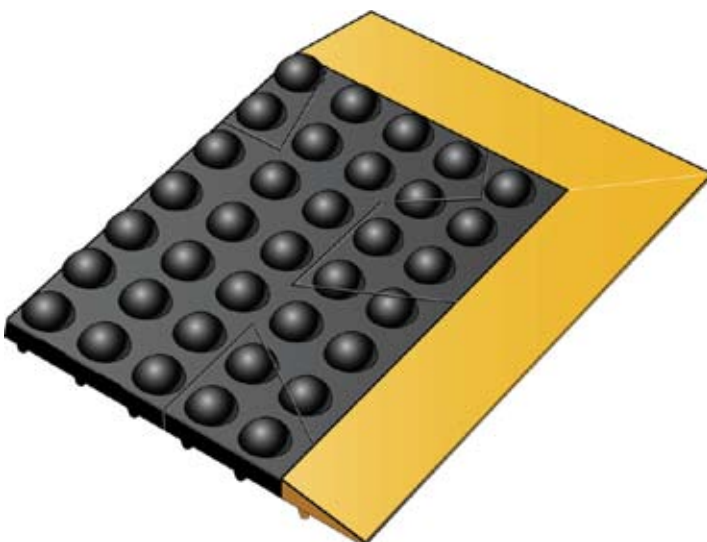
ULTRA-DOME® MODULAR Anti-Fatigue Mats



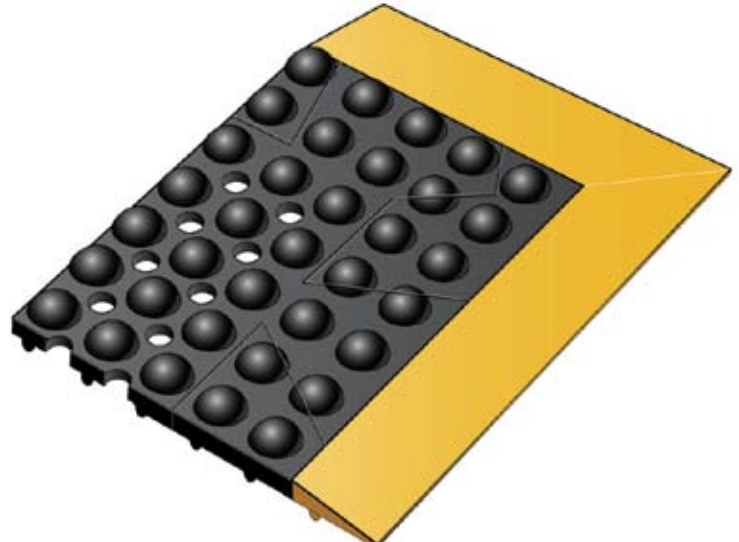
*Patent Pending

ULTRA-DOME

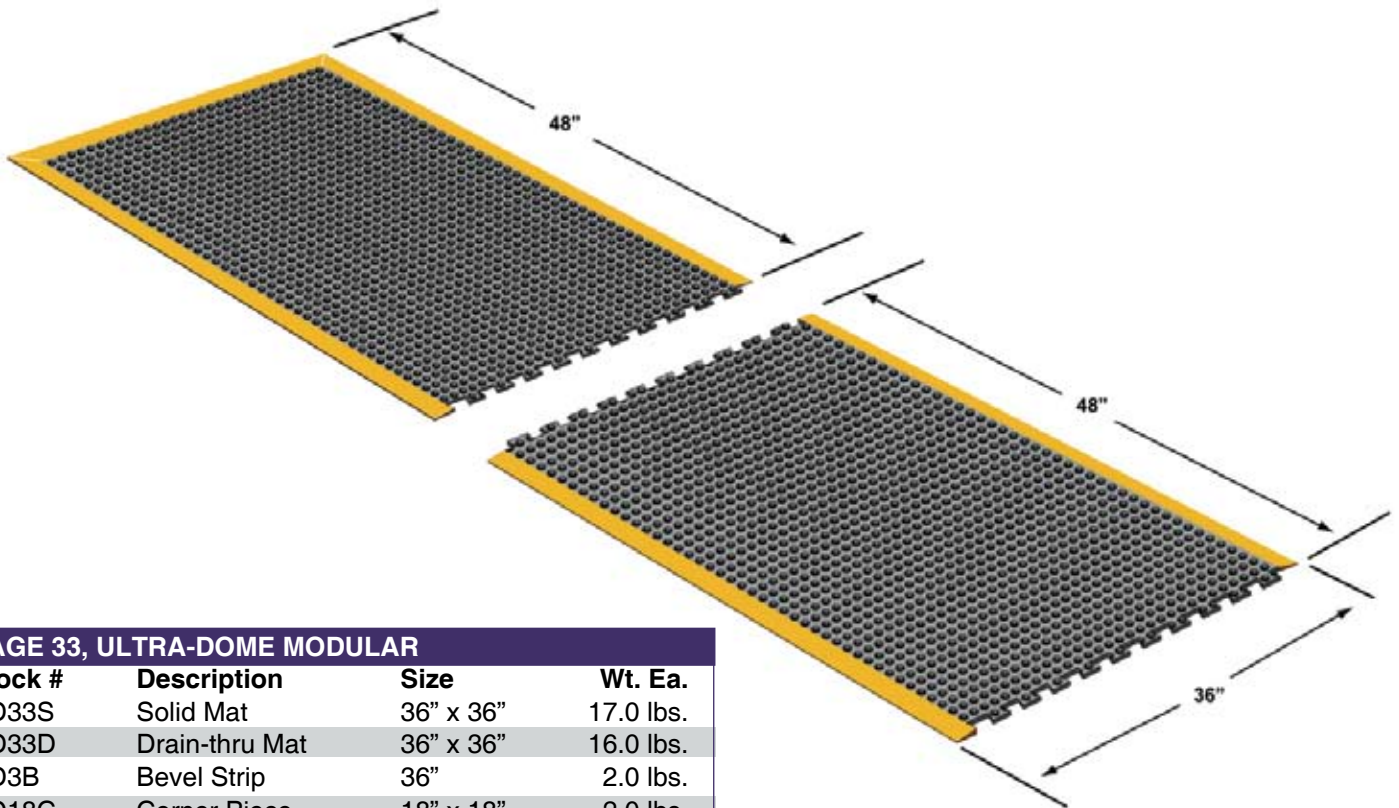
- Ultra-Dome Anti-fatigue mats' blend of hollow dome surface with Multi-Nib back provides a resilient, active surface creating the most unparalleled comfort you have ever experienced with a molded rubber mat.
- Non-directional domed top surface provides excellent traction and a safer work place with high visibility yellow, bevelled borders.
- Ultra-Dome mats are manufactured in 4 versions with individual components that lock together to create mats of virtually any size. Will not pull apart when in use but can easily be unlocked as needed.
- Grease-resistant rubber stands up to machine tool cutting fluids and similar liquids found in industrial and commercial situations.



ULTRA-DOME MODULAR SOLID



ULTRA-DOME MODULAR DRAIN-THRU



PAGE 33, ULTRA-DOME MODULAR

Stock #	Description	Size	Wt. Ea.
UD33S	Solid Mat	36" x 36"	17.0 lbs.
UD33D	Drain-thru Mat	36" x 36"	16.0 lbs.
UD3B	Bevel Strip	36"	2.0 lbs.
UD18C	Corner Piece	18" x 18"	2.0 lbs.

For Yellow bevels, add "Y" to part number.

PAGE 34, ULTRA-DOME INTERLOCK SOLID

Stock #	Description	Size	Wt. Ea.
UD34CS	Center Section	36" x 48"	29.0 lbs.
UD34ES	End Section	36" x 48"	29.0 lbs.

PAGE 34, ULTRA-DOME INTERLOCK DRAIN-THRU

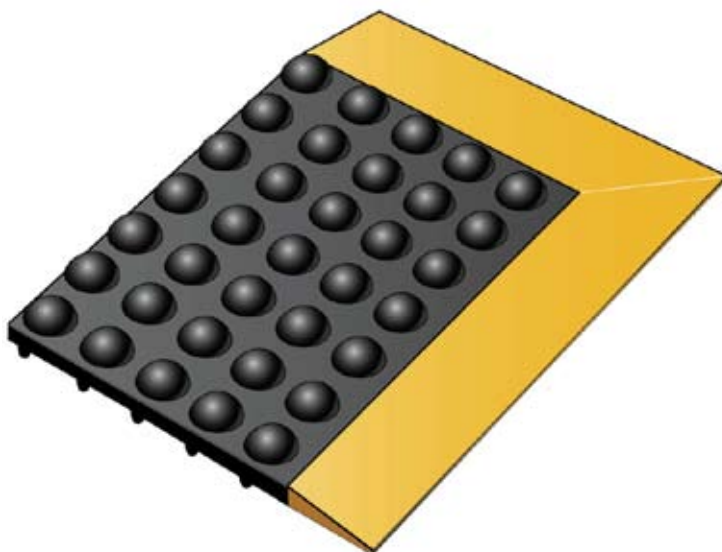
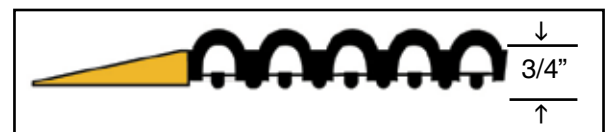
Stock #	Description	Size	Wt. Ea.
UD34CD	Center Section	36" x 48"	28.0 lbs.
UD34ED	End Section	36" x 48"	28.0 lbs.

Colors: Solid Black, Black with Yellow Borders.

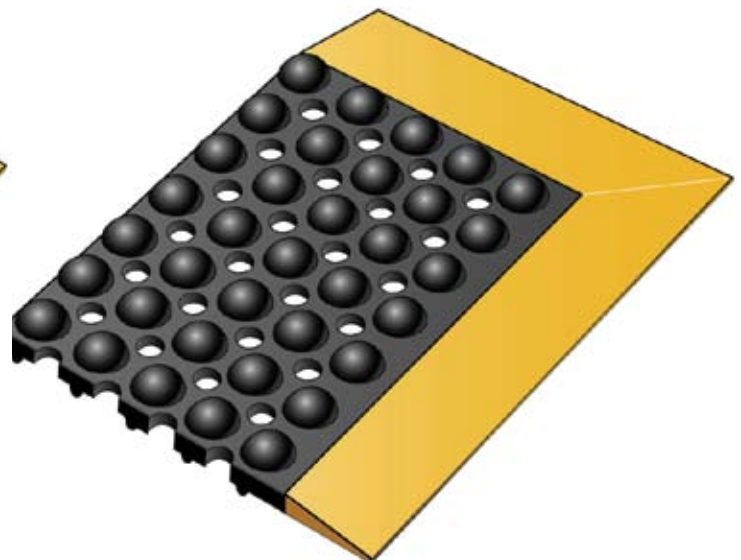
3/4" Thick.

For mats with Yellow bevel edge, add "Y" to part number.

***Patent Pending**



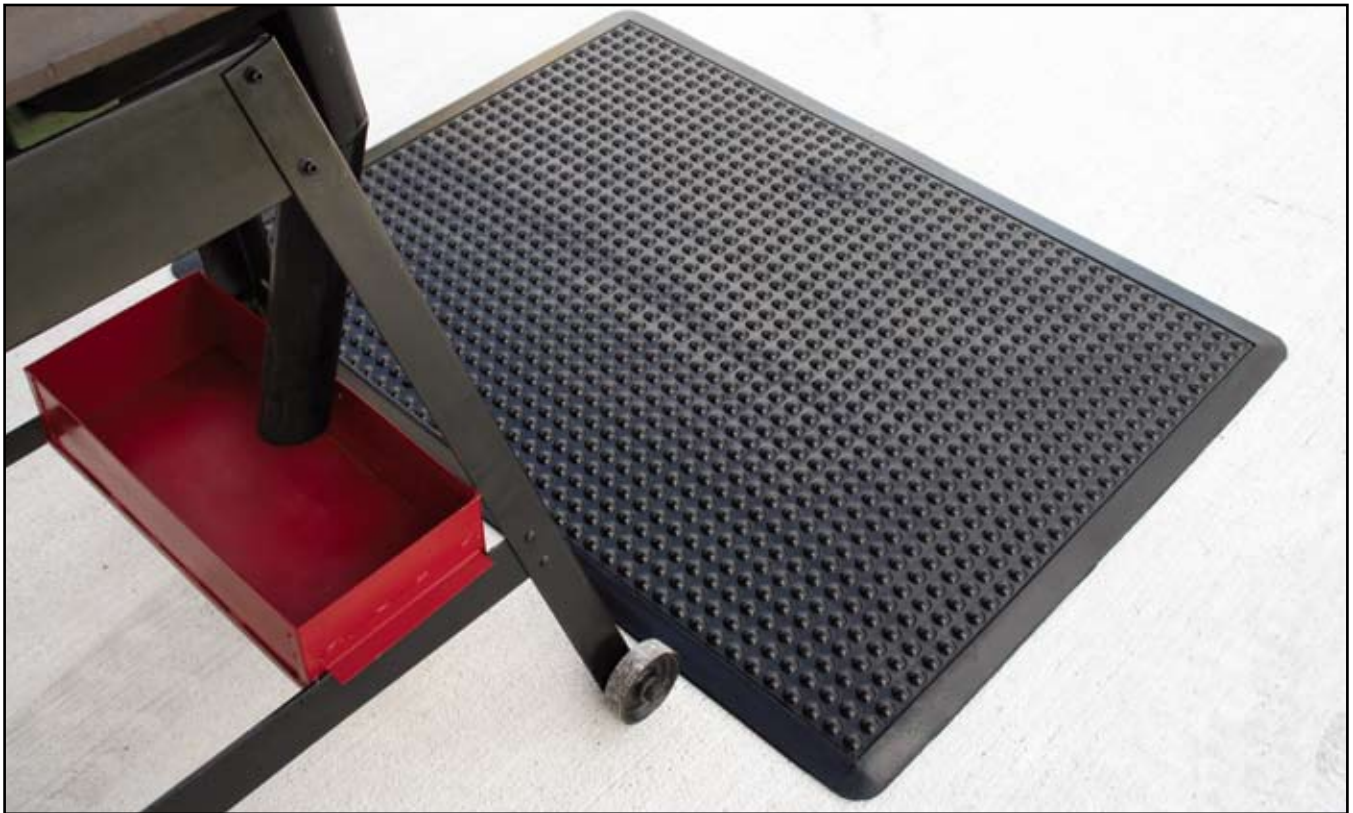
ULTRA-DOME INTERLOCK SOLID



ULTRA-DOME MODULAR DRAIN-THRU



ULTRA-DOME® WORKSTATION Anti-Fatigue

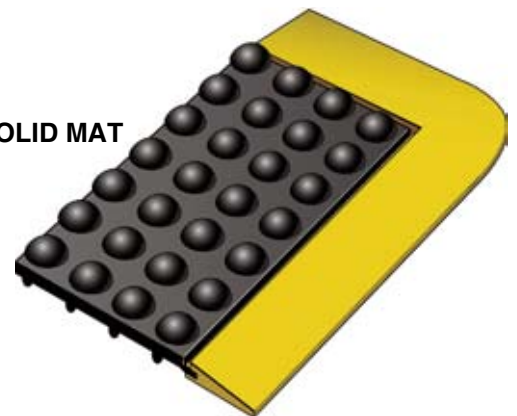


ULTRA-DOME WORKSTATION MAT

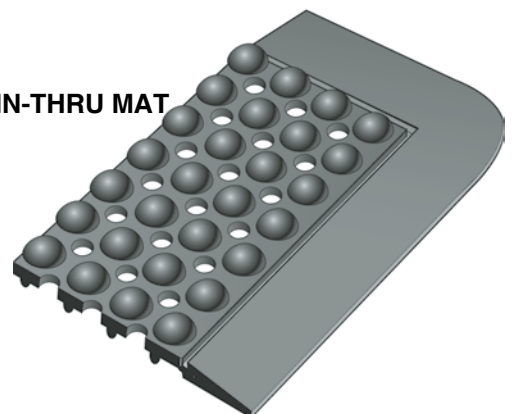
- Designed for worker comfort, Ultra-Dome's unique hollow rubber dome design encourages frequent yet subtle changes in posture, inducing natural flexing of muscles, thus reducing the build-up of lactic acid that causes fatigue.
- Perfect as a single work-area mat, check stands, assembly stations, convenience stores. Single piece molded beveled borders on all 4 sides allow easy employee access.
- Solid and drain-thru mats available.



SOLID MAT



DRAIN-THRU MAT



ULTRA-DOME ANTI-FATIGUE MATS

Stock No.	Description	Sizes	Weight Ea.
UD2436S	Solid	2' x 3'	9.0 lbs.
UD2436D	Drain-Thru	2' x 3'	9.0 lbs.
UD3648S	Solid	3' x 4'	23.0 lbs.
UD3648D	Drain-Thru	3' x 4'	23.0 lbs.

Colors: Solid Black, Black with Yellow Bevels.

1/2" Thick, Bevel 4 sides.

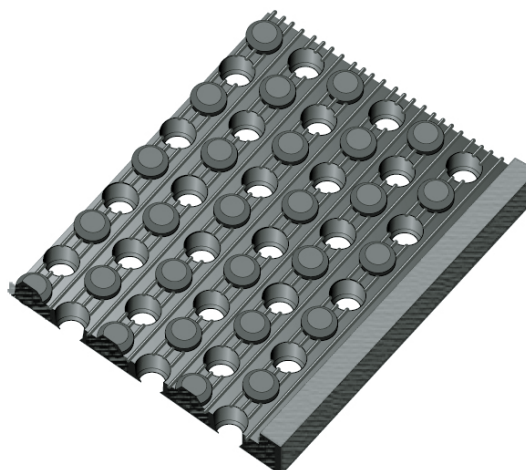
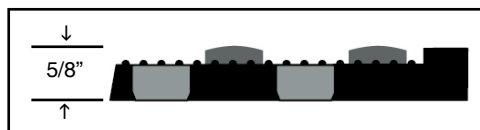
For yellow bevel, add "Y" to part number.

Drain Thru Black Only.



TRITAN® EXTREME DUTY

- Tritan is a tough durable “almost indestructible” combination of nylon fibers and rubber blended into a mat that is oblivious to extreme conditions, metal-working areas, welding areas, milling lines and forklift traffic.
- The drain thru design allows debris and liquids to drop thru mat.
- Tritan stands up to inorganic materials such as caustic soda, white and black liquor, nitric, sulfuric, and hydrochloric acids. It stands up to organic materials such as methylalcohol, mineral oil, ethylene glycol and triethanolamine.
- Tritan suffers no deterioration from ozone exposure and weathering, no signs of deterioration at 400 degrees Fahrenheit.
- No fracture or visible cracks due to cold temperature, -45 degrees Fahrenheit.
- Tritan Extreme Duty offers the most aggressive non-slip surface in the industry.
- Nothing works like it. Nothing lasts like it, in the most extreme conditions.



TRITAN EXTREME DUTY MAT

Stock No.	Size	Weight
TED-2436	2' x 3'	12 lbs.
TED-3660	3' x 5'	30 lbs.
TED-310	3' x 10'	60 lbs.
TED-320	3' x 20'	120 lbs.

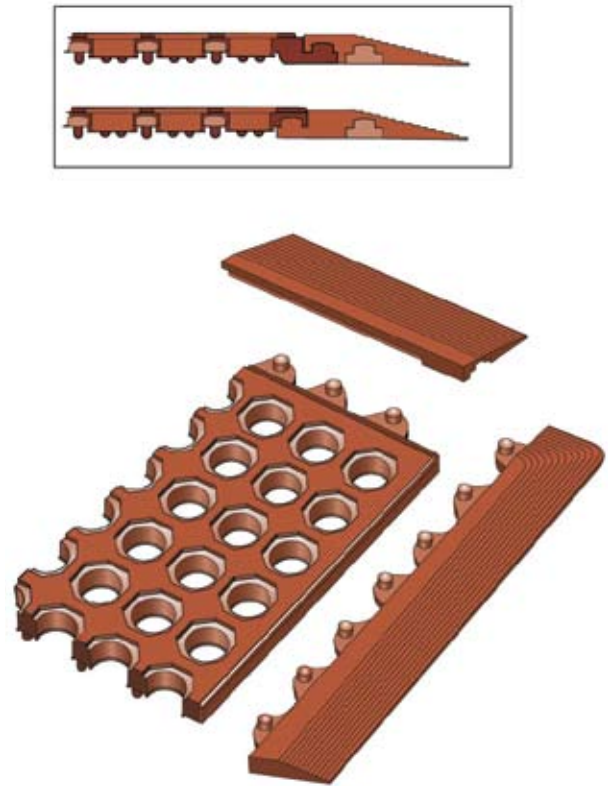
CUSTOM SIZES - AVAILABLE IN LENGTHS UP TO 25 LIN. FT.

Stock No.	Size	Wt./Ln.ft.
TED-36	36"	6.0 lbs.

Colors: Black only. 5/8" Thick.

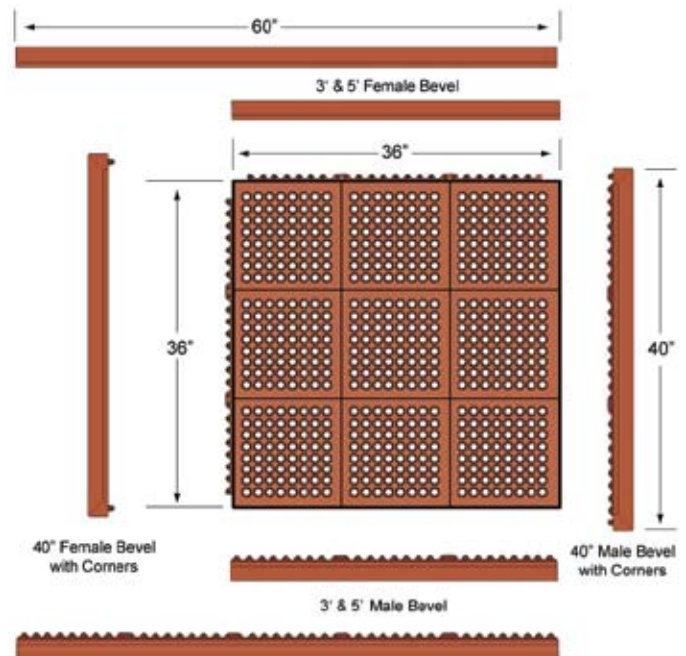


CUSHION CLASSIC™ Kitchen Mats



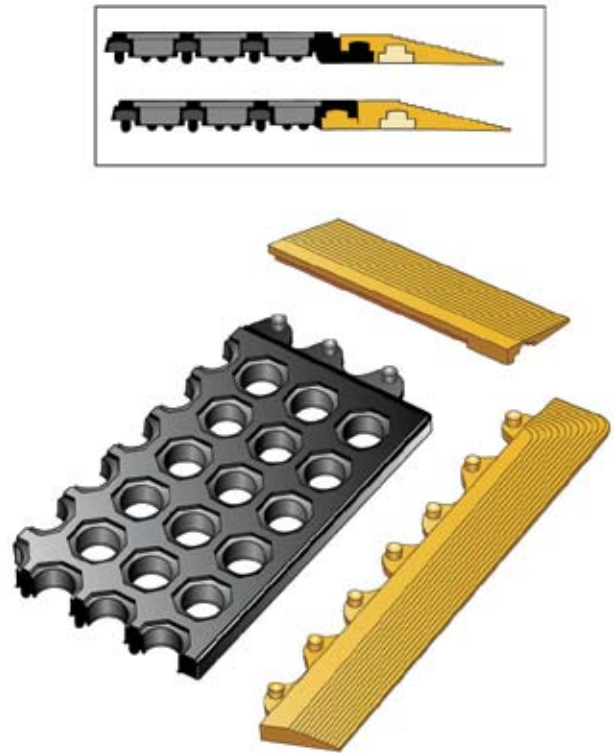
CUSHION CLASSIC KITCHEN

- Available in 3' X 5' size in addition to 3' x 3' size.
- Made of resilient grease-proof rubber to ease the fatigue of long-standing jobs in the kitchen or behind the bar.
- Surface texture helps prevent slips while promoting easy drainage and increase cleanliness.
- Cushion surface helps prevent glass breakage.
- Construction features built-in connectors on two sides, for standard and irregular configurations, no accessory connectors are needed.
- Cushion Classic kitchen matting has a five-year guarantee on its grease-proof capability.



CUSHION CLASSIC KITCHEN MATS

Stock No.	Description	App. Wt.
57154	36" x 36" mat	18 lbs.
56640	36" x 60" mat	30 lbs.
57158	36" male bevel strip	2 lbs.
57156	36" female bevel strip	2 lbs.
56668	40" male bevel w/corners	2 lbs.
56667	40" female bevel w/corners	2 lbs.
56670	60" male bevel strip	3 lbs.
56669	60" female bevel strip	3 lbs.
Color: Terra Cotta Thickness: 5/8"		



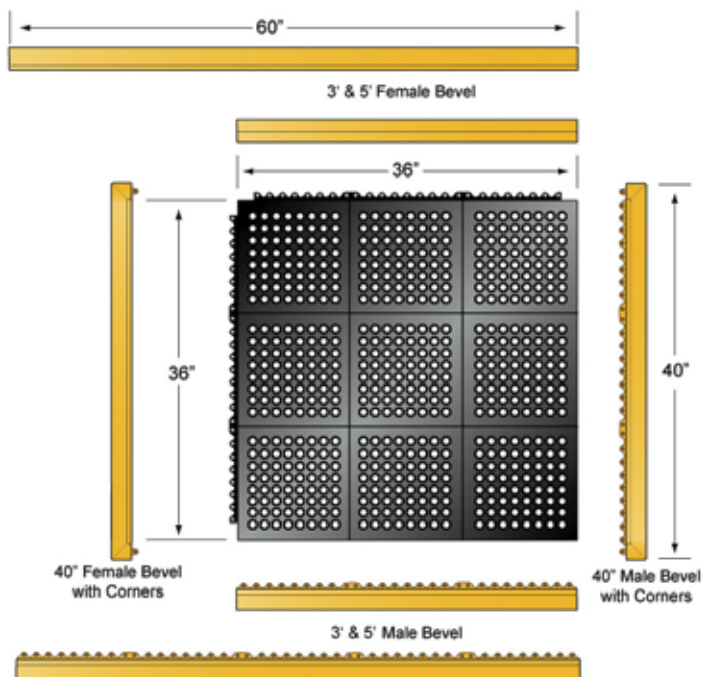
CUSHION CLASSIC

- Available in both 3' x 5' and 3' x 3' size.
- Made of resilient rubber that helps minimize the fatigue of long-standing...important in today's stress-conscious work place.
- Surface texture helps prevent slipping while minimizing dirt trapping. Multi-nib back adds to comfort while enhancing drainage and cleanliness.
- Built-in connector strip on two sides of mat makes it easy to add on mats for coverage of areas with regular proportions.
- Grease-resistant rubber stands up to machine tool cutting fluids and similar liquids found in industrial and commercial environments.
- Bevel strips available in "safety yellow" and black.

CUSHION CLASSIC All Purpose Matting

Stock No.	Description	App. Wt.
57160	36" x 36" mat	19 lbs.
56642	36" x 60" mat	30 lbs.
57162	36" bevel strip male	2 lbs.
57164	36" bevel strip female	2 lbs.
56673	40" bevel strip male w/corner	2 lbs.
56674	40" bevel strip female w/corner	2 lbs.
56671	60" bevel strip male	3 lbs.
56672	60" bevel strip female	3 lbs.

Colors: Black mats, Black and Safety Yellow bevels.
Thickness: 5/8"
 For yellow bevels, add "Y" to part number.



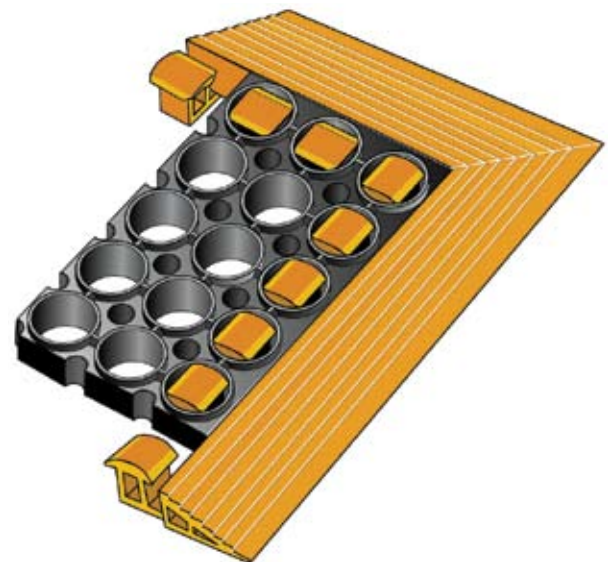


SAFETY TRACT® Anti-Fatigue Mats



SAFETY TRACT

- Provides safe firm footing and superior anti-fatigue, increasing worker productivity.
- Made of resilient grease-resistant rubber that stands up to machine tool cutting fluids, Butyl Alcohol, Sodium Hydroxide and similar liquids, found in industrial and commercial situations.
- Surface design helps prevent slipping while minimizing dirt trapping.
- Multi-bar back adds to comfort while enhancing drainage and cleanliness.
- Safety beveled borders on all 4 sides for extra visibility.
- Safety bevel 3 sides option.



SAFETY TRACT ANTI-FATIGUE

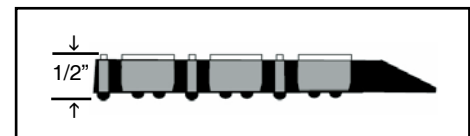
Stock No.	Sizes	Weight
ST 2840	28" x 40"	15.0 lbs.
ST 4040	40" x 40"	22.0 lbs.
ST 4052	40" x 52"	30.0 lbs.
ST 4064	40" x 64"	38.0 lbs.
ST 4124	40" x 124"	76.0 lbs.

Colors: Black, with Orange Safety bevels only.
Thickness 7/8"



COMFORT TRACT

- Comfort Tract offers light weight design, high performance, and excellent anti-fatigue characteristics in industrial and commercial work stations.
- Comfort Tract at 1/2" thick features a molded bevel edge on four sides that helps keep the mat in place and provides easy employee and cart access.
- Molded cross bar surface assures safe footing. Multi-knob under side adds to comfort while enhancing drainage and cleanliness.
- Made of resilient grease-resistant rubber that stands up to machine tool cutting fluids, Butyl Alcohol, Sodium Hydroxide and similar liquids found in industrial and commercial situations.
- Available in two stock sizes, 3'X5' and 3'X10', and two formulations grease resistant (black) and grease proof (gray).
- Mat is 1/2" thick.



COMFORT TRACT		
Stock No.	Sizes	App. Wt.
CT3660	3' x 5'	25 lbs.
CT310	3' x 10'	50 lbs.
Colors: Black (Grease Resistant), Gray (Grease Proof). Thickness 1/2"		



UNI-MAT™ All Purpose Entry Mats



UNI-MAT

- Uni-Mat with it's Grease Proof Nitril Rubber formulation stands up to machine cutting fluids - vegetable oils - animal fats – found in industrial and food service operations. This premium compound also makes Uni-Mat the most resilient rubber mat we've ever made.
- Uni-Mat is easy to handle – at 17 lbs. and 3/8" thick - yet holds securely in-place due to the large textured bar sub-surface pattern and shows no fractures or cracks due to cold temperature, -45 degrees.
- Uni-Mat has turned out to be one of the most versatile products we've ever manufactured - used in manufacturing – convenience & grocery store – kitchen and food service applications.

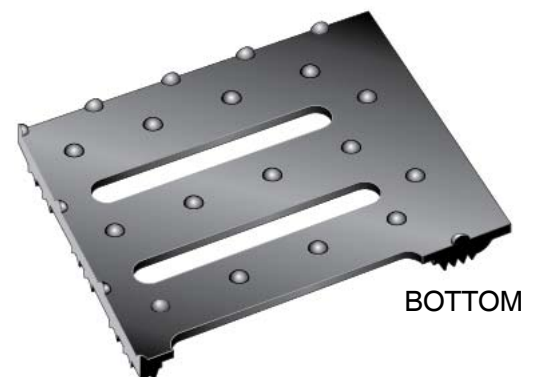


UNI-MAT				
Stock No.	Color	Sizes	Thickness	Weight
UM3660	Black	36" x 60"	1/4"	15.0 lbs.
Thickness 1/2".				



TRAKTOR MAT ANTI-FATIGUE

- Multidirectional non-skid surface with V-Rib wiper blades for lineal traffic. Drain-thru design. Knobbacked to facilitate drainage, air-flow and greater ergonomic comfort.
- Manufactured with a 75% reprocessed - SBR/NR fiber-reinforced rubber compound with added polymers to aid in non-staining, non-marking qualities.
- This tough durable compound makes this an ideal mat for welding, machining and heavy assembly areas.
- Forklifts and handcarts are no match for this great product, making it an ideal choice for grating and catwalks.
- Traktor mat is available in 24", 36" and 48" widths in full rolls of 20 feet or cut lengths. Color: Black, 1/2 inch thick.



TRAKTOR MAT

Stock No.	Roll Size	Weight per Lin. Ft.
TK-24	2' x 20'	3.4 lbs.
TK-36	3' x 20'	5.1 lbs.
TK-48	4' x 20'	6.8 lbs.

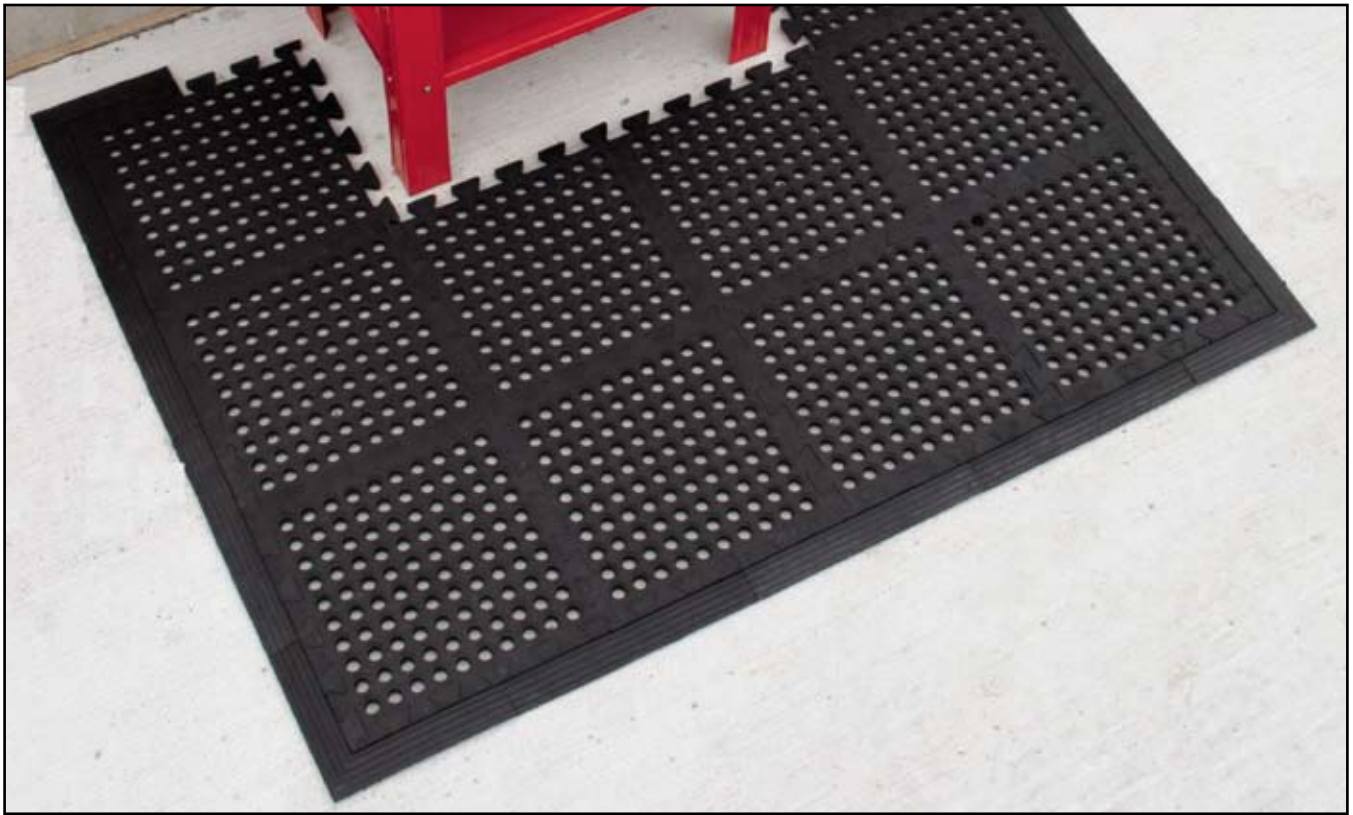
1/2" thick.

Cut lengths or full rolls.

Color: Black.

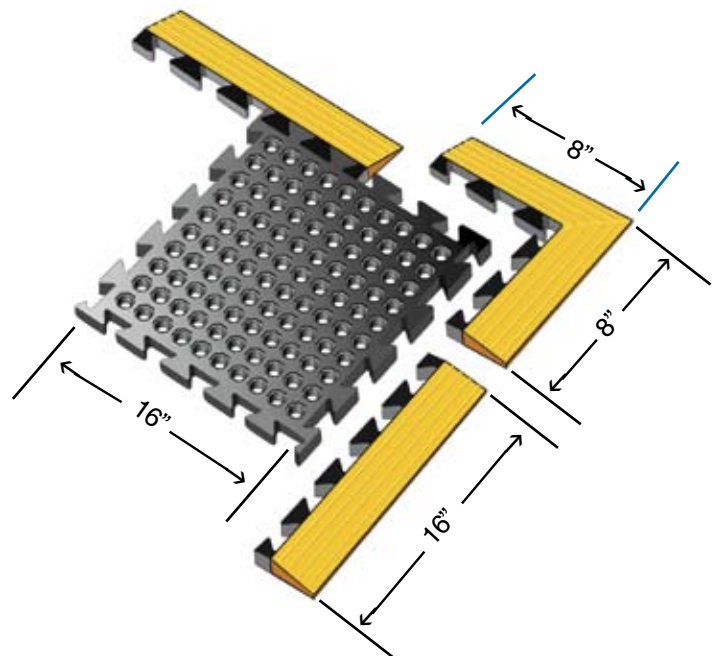


COMFORT QUAD® DRAIN-THRU Mats



COMFORT QUAD™ DRAIN-THRU

- Comfort Quad is a versatile multi-purpose rubber mat that adapts itself perfectly to use around machinery in factories, irregular proportions in kitchens or around bars.
- Any wet area applications, grease-resistant rubber that stands up to machine tool cutting, fluids and similar industrial/commercial situations. Knob back adds to comfort while enhancing drainage.
- Comfort Quad has an open interlocking lug on 4 sides, making it easy to assemble many components to fit your coverage requirements.
- Sections are 16" x 16" x 3/4" and at 6 lbs. each, light weight, easy to handle and clean.
- Bevel strips and corners are available in "safety yellow" as well as black.



COMFORT QUAD

Stock No.	Description	App. Wt.
CQD1616	16" x 16" mat	6.00 lbs.
CQB16	16" Bevel Strip	1.00 lbs.
CQC	Corner Piece	.50 lbs.

Colors: Black Tile (Corner pieces, bevel strips: Black, Yellow)

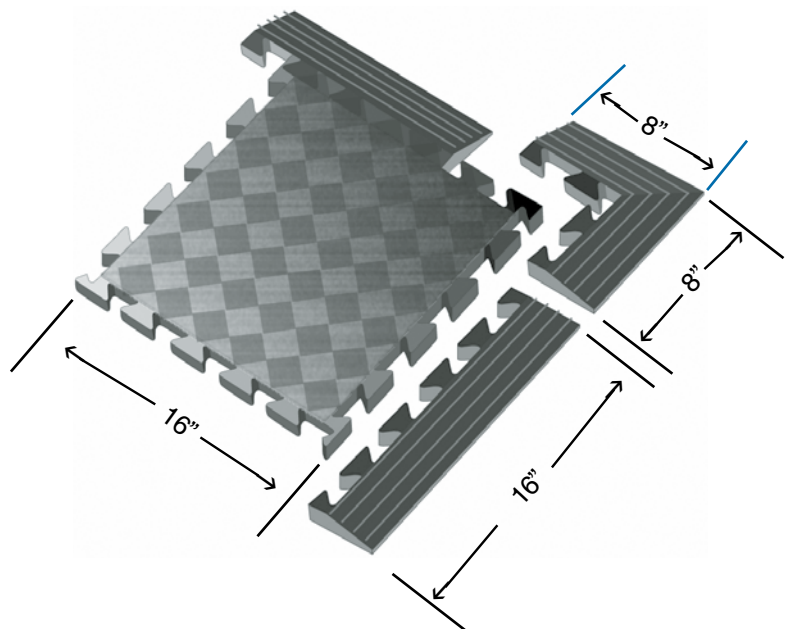
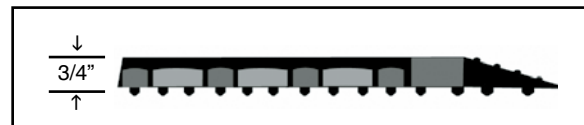
Thickness: 3/4".

For yellow bevels, add "Y" to part number.



COMFORT QUAD SOLID

- Comfort Quad Solid is a versatile multi-purpose rubber mat that quickly and easily covers large areas and adapts itself perfectly as a secondary flooring.
- Comfort Quad has a four side open lug interlocking system, making it easy to assemble and keeps it together despite constant use.
- Comfort Quad's rubber formulation in combination with its cavity back design with evenly spaced compression knobs provide surprising flexibility under foot. A slightly textured parquet surface provides excellent non-slip properties while accommodating wheel traffic.
- Sections are 16"X16"X3/4" and at 6 lbs. each, light weight and easy to handle. Bevel strips are 16" long and 2" wide, with a pattern of 4 ribs on the surface for on and off safety. Bevels are available in safety yellow as well as black.



COMFORT QUAD

Stock No.	Description	App. Wt.
CQS1616	16" x 16" mat	6.00 lbs.
CQB16	16" Bevel Strip	1.00 lbs.
CQC	Corner Piece	.50 lbs.

Colors: Black Tile (Corner pieces, bevel strips: Black, Yellow)

Thickness: 3/4".

For yellow bevels, add "Y" to part number.



TRITAN® FLOOR SAVER Mats

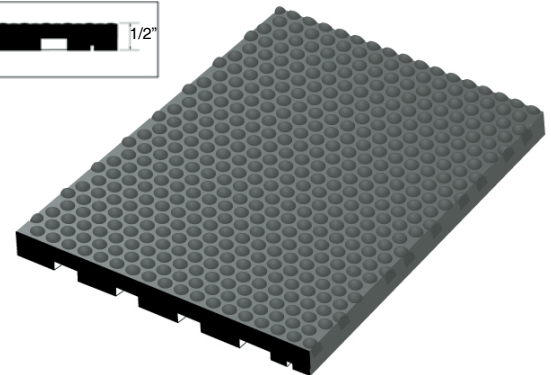


TRITAN FLOOR SAVER MATS

- Protect your expensive flooring with Tritan Floor Saver matting, 4' x 6' rubber mat.
- Ideal for steel warehousing and weightrooms, protects both floor and stored materials.
- Slip-resistant diamond design surface for worker safety.
- Made from the same tough combination of rubber and fiber as other Tritan products for strength and durability.

TRITAN FLOOR SAVER MATS – 1/2" THICK

Stock No.	Sizes	App. Weight
12450	4' x 6'	75 lbs.
Color: Black only.		



CUSHION CLASSIC™ Solid Cushion Mats

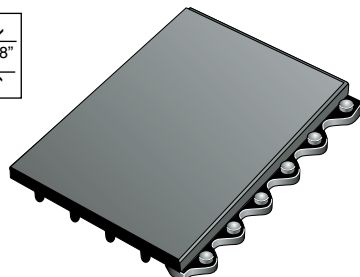
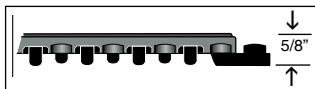
CUSHION CLASSIC SOLID

- Solid surface features grid pattern for surer footing. Provides easy movement of wheeled equipment.
- Made in 36" x 36" modules with built-in connector strip on two sides for easy expansion of floor coverage.
- Ideal for industrial applications and weight rooms.

CUSHION-EZE SOLID Cushion Mats

Stock No.	Description	App. Wt.
57150	36" x 36" mat	22 lbs.
57162	36" bevel strip male	2 lbs.
57164	36" bevel strip female	2 lbs.
56673	40" bevel strip male w/corner	2 lbs.
56674	40" bevel strip female w/corner	2 lbs.

Colors: Black mats, Black and Safety Yellow bevels.
Thickness: 5/8".
For yellow bevels, add "Y" to product number.





CARPET MATS PAGES 1-4

Town N Country	1
Poly-Olefin	2
Brush-Rib	3
Poly Pin	4

ENTRANCE/SCRAPER MATS PAGES 5-7

Scraper	5
Tritan Finger Tip	6
Tritan Ultra Scrape	7

LOGO MATS PAGES 8-11

Graphic Visions	8
Great Pyramid Graphics	9
Billboard	10
Pyra-Mat Logo	11

ANTI-FATIGUE MATS PAGES 11-37

Pyra-Mat Anti-Fatigue	11
Rhino Hide	12
Reflex	13-14
Softwoods	15
Tuff Plush	16
Doctor Stand-Eze	17
Multi-Flex	18
Marbleized Tile Top	19
Xtra-Flex	20
Diamond Plate	21
Diamond Plate Brite	22
Diamond Plate/Knob Back	23
Diamond Plate Contract Duty	24
Corrugated Contract Duty	24
Easy Kleen	24
Industrial Smooth	25
HDT Anti-Fatigue	26
GrandStand	27
Comfort Craft Commercial	28
Diamond-Tred	29
Dura Step	30
Comfort Step Ribbed	31
Comfort Step Textured	32
Comfort Step Safety	33
Tritan Ultra-Dome Rolls	34
Ultra-Dome Modular	35
Ultra-Dome Interlock	36
Ultra-Dome Workstation	37

PRODUCTS

DRAIN THRU MATS PAGES 35-45

Ultra-Dome Modular	35
Ultra-Dome Interlock	36
Ultra-Dome Workstation	37
Tritan Extreme Duty	38
Cushion Classic Kitchen	39
Cushion Classic	40
Safety Tract	41
Comfort Tract	42
Uni-Mat	43
Traktor Mat	44
Comfort Quad Drain-Thru	45

HIGH IMPACT MATS PAGES 46-47

Comfort Quad Solid	46
Tritan Floor Saver	47
Cushion Classic Solid	47

ESD ANTI-FATIGUE PAGES 48-50

Reflex Conductive	48
Comfort Step ESD	48
Conductive Diamond	49
Conductive Smooth	49
Polaris Static Dissipative Sponge	50
Static Dissipative Corrugated	50

ESD RUNNERS PAGE 51

Conductive Smooth	51
Static Dissipative Corrugated	51
Conductive Diamond	51

RUNNERS PAGES 52-54

Corrugated Runner	52
Easy Kleen Runner	53
Easy Kleen Spike	53
Diamond Plate	53
Pyramid Runner	53
Tritan Perma-Walk	54
Transparent Gripper Back	54

RECESS MAT PAGE 54

Pyramid Top-Knob Back	54
-----------------------------	----

DIELECTRIC SWITCHBOARD PAGES 55-56

ASTM Switchboard (Corr. & Diamond)	55
Mil Spec Smooth Top Switchboard	56
Mil Spec Diamond Switchboard	56
Dual Purpose Dielectric Anti-fatigue	56

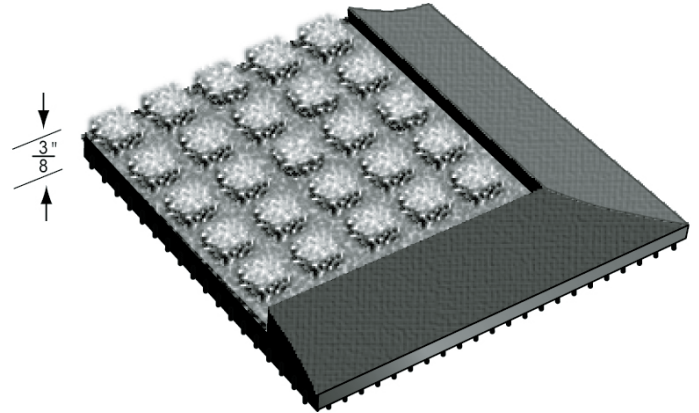
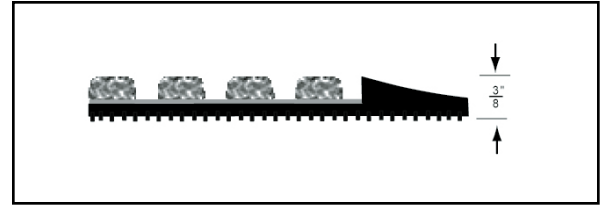
CHAIRMATS PAGES 57-60

DOCK BUMP. & WHEEL CHKS PAGES 61-64

Dock Bumpers	61-64
Wheel Chocks	64



TOWN 'N' COUNTRY™ Entrance Mats



TOWN 'N' COUNTRY

- Strong all weather surface of raised Reinforced, Loop-Pile, fabric covered surface cubes that prevent pile from crushing.
- Ideal for heavy traffic areas, scraping off soil, sand and snow to make this a perfect mat for any climate.
- Raised reinforced rubber borders help trap soil and moisture. Holding up to 1-1/2 gallons of water per square yard.
- Nitrile rubber base with cleated backing reduces mat movement and remains flexible in freezing temperatures.
- Easily cleaned by vacuum, hose, or pressure washer, not launderable.



Brown



Burgundy



Charcoal



Green



Blue



Red/Black



Silver

TOWN 'N' COUNTRY		
Stock No.	Sizes	App. Weight.
TNC-2436	2' x 3'	7.0 lbs.
TNC-3648	3' x 4'	14.0 lbs.
TNC-3660	3' x 5'	17.0 lbs.
TNC-310	3' x 10'	34.0 lbs.
TNC-4872	4' x 6'	27.0 lbs.
TNC-4896	4' x 8'	36.0 lbs.
TNC-410	4' x 10'	45.0 lbs.
TNC-7296	6' x 8'	54.0 lbs.
Colors: Brown, Burgundy, Charcoal, Green, Blue, Red/Black, Silver.		





POLY-OLEFIN

- A decorative, all purpose mat at a budget price.
- Carpet surface made of durable 100% continuous filament olefin...bonded to stain-resistant, slip-resistant base.
- Dirt hiding tweed pattern is universally popular.

POLY-OLEFIN MATS

Stock No.	Size	App. Wt.
PPV-2436	2' x 3'	4.2 lbs.
PPV-3648	3' x 4'	8.4 lbs.
PPV-3660	3' x 5'	10.5 lbs.
PPV-3672	3' x 6'	12.6 lbs.
PPV-310	3' x 10'	21.0 lbs.
PPV-4872	4' x 6'	16.8 lbs.
PPV-4896	4' x 8'	22.4 lbs.
PPV-410	4' x 10'	28.0 lbs.

Custom Sizes - available in lengths up to 60 lin. ft.

Stock No.	Size	App. Wt.
PPV-36	3' x 60'	2.0 lbs. lin. ft.
PPV-48	4' x 60'	2.7 lbs. lin. ft.
PPV-72	6' x 60'	4.0 lbs. lin. ft.

Colors: Beige, Blue, Red/Black, Charcoal, Walnut, Solid Navy, Hunter Green, Solid Gray, Solid Black



Blue



Charcoal



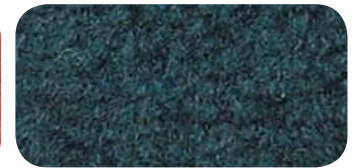
Beige



Solid Navy



Red/Black



Hunter Green



Walnut



Solid Black

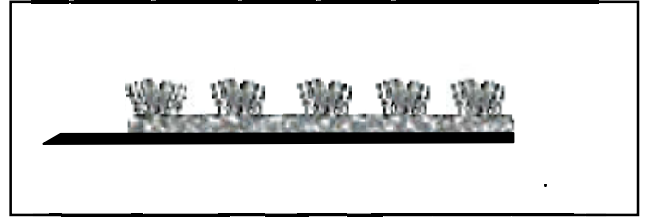


Solid Gray





BRUSH-RIB™ Carpet Mats



BRUSH-RIB

- The high fashion look of fine carpeting in a hi-lo rib pattern with outstanding durability in the toughest indoor or outdoor installations.
- Scrapes dirt and grit off shoes and removes moisture at the same time.
- 100% polypropylene face carpeting on heavy-duty slip-resistant and stain-resistant vinyl base.
- Brush-Rib mats feature six colors.



Pepper



Blue



Brown



Solid Gray



Red



Green

BRUSH-RIB MATS

Stock No.	Size	App. Wt.
BRV-2436	2' x 3'	4.8 lbs.
BRV-3648	3' x 4'	9.6 lbs.
BRV-3660	3' x 5'	12.0 lbs.
BRV-3672	3' x 6'	14.4 lbs.
BRV-310	3' x 10'	24.0 lbs.
BRV-320	3' x 20'	48.0 lbs.
BRV-4872	4' x 6'	19.2 lbs.
BRV-4896	4' x 8'	25.6 lbs.
BRV-420	4' x 20'	64.0 lbs.

Custom Sizes - available in lengths up to 60 lin. ft.

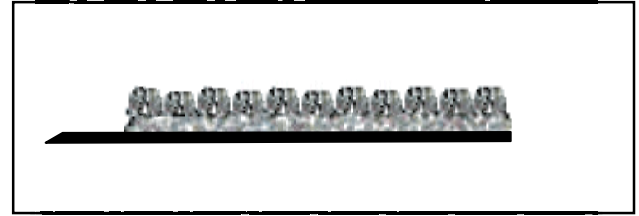
Stock No.	Size	App. Wt.
BRV-36	3' x 60'	2.3 lbs. lin. ft.
BRV-48	4' x 60'	3.1 lbs. lin. ft.
BRV-72	6' x 60'	4.6 lbs. lin. ft.

Colors: Pepper, Blue, Brown, Solid Gray, Red, Green.





BURGUNDY



POLY PIN

- The rich, luxurious look of berber-style carpeting combined with durability that lasts whether used indoors or out.
- Raised nib design scrapes off dirt while removing moisture at the same time.
- Face carpeting is 100% polypropylene bonded to heavy-duty stain-resistant, slip-resistant vinyl base.
- Five carpeting colors.

POLY-PIN MATS

Stock No.	Size	App. Wt.
PNV-2436	2' x 3'	4.7 lbs.
PNV-3648	3' x 4'	9.4 lbs.
PNV-3660	3' x 5'	11.7 lbs.
PNV-3672	3' x 6'	14.0 lbs.
PNV-310	3' x 10'	23.4 lbs.
PNV-320	3' x 20'	46.8 lbs.
PNV-4872	4' x 6'	18.7 lbs.
PNV-4896	4' x 8'	25.0 lbs.
PNV-420	4' x 20'	62.4 lbs.

Custom Sizes - available in lengths up to 60 lin. ft.

Stock No.	Size	App. Wt.
PNV-36	3' x 60'	2.3 lbs. lin. ft.
PNV-48	4' x 60'	3.0 lbs. lin. ft.
PNV-72	6' x 60'	4.5 lbs. lin. ft.

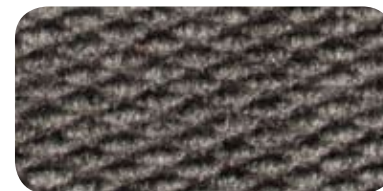
Colors: Gray, Hunter Green, Pebble, Burgundy, Charcoal



Hunter Green



Pebble



Gray



Charcoal

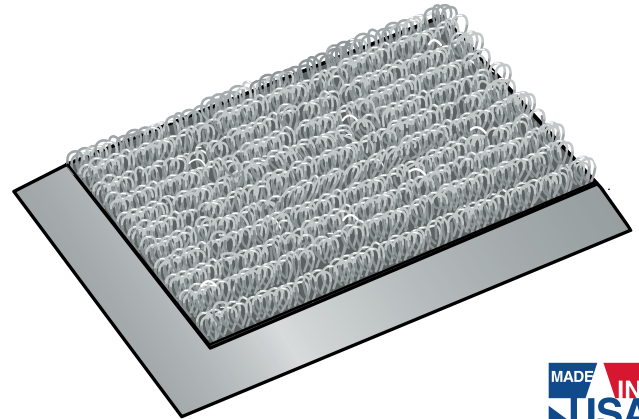
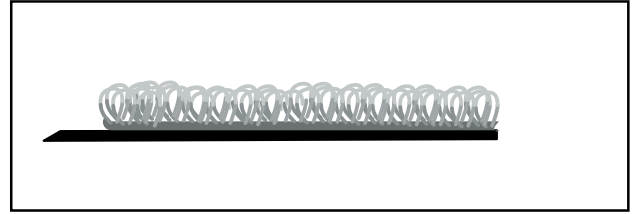




SCRAPER™ Entrance Mats



RED/BLACK



SCRAPER

- Fortified vinyl loop-pile carpeting bonded to slip-resistant, stain-resistant vinyl base.
- Loop-textured vinyl carpeting grabs dirt and grit from shoes. Comes clean with shake-out or hosing.
- Excellent anti-static properties. Resistance measured at 10×10^{12} ohms.
- Treated with Vinyzene for protection against the growth of mold, mildew, fungi and odor-causing germs.
- The best mat for extremely tough traffic situations.

SCRAPER MATS

Stock No.	Sizes	App. Weight.
MSV-2436	2' x 3'	5.6 lbs.
MSV-3648	3' x 4'	11.3 lbs.
MSV-3660	3' x 5'	14.1 lbs.
MSV-3672	3' x 6'	16.9 lbs.
MSV-310	3' x 10'	28.0 lbs.
MSV-4872	4' x 6'	22.6 lbs.
MSV-4896	4' x 8'	30.1 lbs.

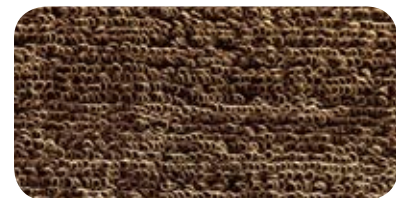
Custom Sizes - available in lengths up to 60 lin. ft.

Stock No.	Sizes	App. Weight.
MSV-36	3' x 60'	2.7 lbs./lin. ft.
MSV-48	4' x 60'	3.6 lbs./lin. ft.

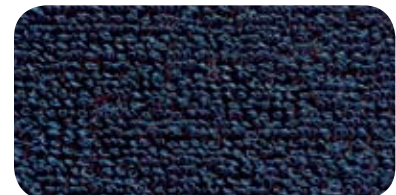
Colors: Red/Black, Green, Pewter, Blue and Beige Tweed.



Pewter



Beige Tweed



Blue

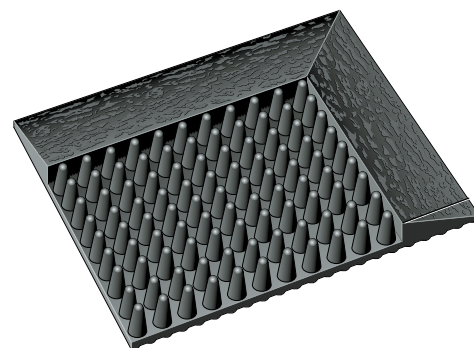
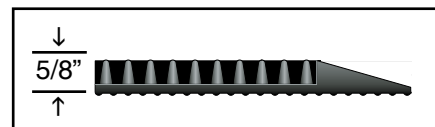


Green



TRITAN® FINGER TIP

- Our Tritan Finger Tip mats are setting the standard for “green.” Made of 100% recycled materials and completely recyclable themselves, they are the most durable finger tip mats in the industry.
- High quality, heavy-duty rubber provides long-lasting brush-off action. Gets dirt and moisture off shoes fast.
- Thousands of rubber “bristles” are molded into the mat. Flexible and sturdy, they brush off mud, slush, and snow which collect at the base of mat.
- Slip-resistant base helps keep mat in position.
- Beveled borders help prevent tripping.
- Easy to keep clean...turn over, shake out or hose off.



TRITAN FINGER-TIP MATS		
Stock No.	Size	App. Weight.
FT2432	24" x 32"	10.8 lbs.
FT3239	32" x 39"	19.0 lbs.
FT3660	36" x 60"	24.0 lbs.
FT3672	36" x 72"	37.0 lbs.
Color: Black only. 5/8" Thick.		



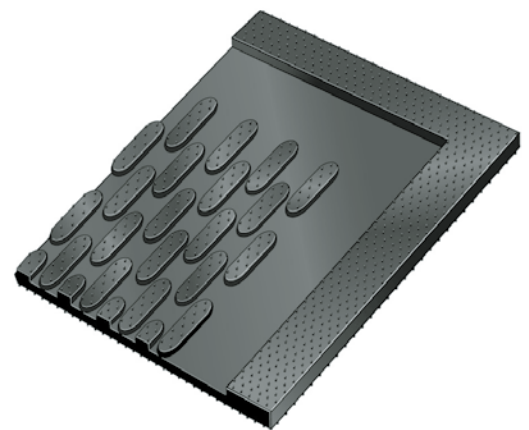
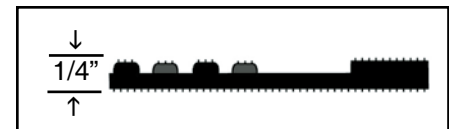


TRITAN® ULTRA SCRAPE® Multi-Purpose Mats



TRITAN® ULTRA SCRAPE

- Tritan Ultra Scrape mats provide the optimum defense at the door against dirt, pebbles, and grit being tracked in to your building.
- Triton mats are the most durable in the industry and made of 100% recycled materials.
- Ultra Scrape mats work wonders towards preventing slip and fall accidents in environments where traction is essential, outside entrances, locker rooms, lunch counters, and work stations.
- This low profile mat will provide the positive traction needed in critical areas.
- Easy to clean - just shake or hose off.
- Rubber compound with its hi-lo anti-skid surface is not affected by most greases and oils.



TRITAN ULTRA SCRAPE

Stock No.	Size	App. Weight.
US3660	3' x 5'	11.0 lbs.
US4872	4' x 6'	18.0 lbs.
US3696	3' x 8'	18.0 lbs.
US310	3' x 10'	22.0 lbs.

Colors: Black only.
1/4" Thick





GRAPHIC VISIONS

- Graphic Visions offer an eye catching definition and visual clarity that make lasting statements in high-traffic areas like entrances, lobbies, reception areas and service counters.
- With virtually any design and a range of 8 rich colors from a standard palette of 27. The computer-controlled injection dye printing provides the capability to achieve almost unlimited color combinations.
- Graphic Visions Color Logo Mats are made with a high twist nylon face and reinforced nitrile rubber backing that maintains an attractive appearance and endures years of wear.
- There is no art charge, no set-up charge and no minimum orders. Please submit artwork in an electronic version of either tiff, jpeg or bmp. We also accept Vector files such as cdr, eps or Illustrator.

GRAPHIC VISIONS LOGO MATS

Stock No.	Size	Approx. Wt.
GV-2436	2' X 3'	5.0 lbs.
GV-3648	3' X 4'	9.0 lbs.
GV-3660	3' X 5'	11.0 lbs.
GV-310	3' X 10'	22.0 lbs.
GV-4872	4' X 6'	17.5 lbs.
GV-4896	4' X 8'	23.5 lbs.

CUSTOM SIZES - avail. in lengths up to 20 ft.

Stock No.	Widths	Approx. Wt.
GV-36	36"	2.25 lbs. lin. ft.
GV-48	48"	3.00 lbs. lin. ft.
GV-60	60"	3.75 lbs. lin. ft.
GV-72	72"	4.50 lbs. lin. ft.

Colors: See Chart



Burgundy - 100



Charcoal - 101



Brown - 102



Dark Gold - 103



Turquoise - 104



Purple - 105



Light Blue - 106



Royal Blue - 107



Black - 108



Gold - 109



Emerald Green - 110



Chocolate - 111



Red - 112



Cranberry - 114



Grey - 115



Silver - 116



Forest Green - 117



Navy - 118



Rose - 119



Sandalwood - 120



Steel Blue - 121



Suede - 123



Clay - 126



Orange - 127



Yellow - 128



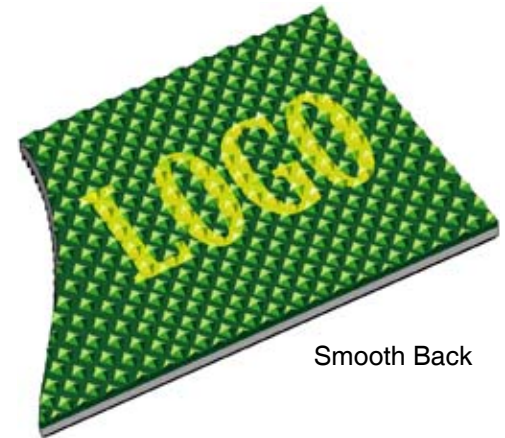
Aquamarine - 130



White - 140



GREAT PYRAMID GRAPHICS™ Logo & Recess Mats



Smooth Back



Knob Back

GREAT PYRAMID GRAPHICS

- The Great Pyramid graphic mat establishes a new standard in image precision, sharpness, and durability – The bright and vivid colors extend all the way through the entire thickness of the pyramid mat.
- With striking clarity of design, Great Pyramid solid vinyl mats are perfect accents at the finest hotel entrances, plus offer traction and durability for many years even under the heaviest traffic conditions.
- Great Pyramid mats are available in two styles.
 - The knobbed back style is for recessed applications and at 7/16" thick creates an incredibly durable and heavy-duty system.
 - The smooth back is 1/4" thick and used as a surface mat on hard floors, producing the resolution and detail that your logo deserves.



Burgundy



Dark Gray



Black



Brown



Light Gray



Navy Blue



Tan



Forest Green

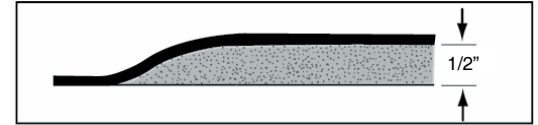
GREAT PYRAMID MATS

Stock No.	Size	Wt. Smooth	Wt. Knob
GP-2436	2' x 3'	8.5 lbs.	9.5 lbs.
GP-3648	3' x 4'	17.0 lbs.	19.0 lbs.
GP-3660	3' x 5'	21.0 lbs.	24.0 lbs.
GP-4872	4' x 6'	33.0 lbs.	38.0 lbs.

Stock No.	Widths	Wt./Lin.Ft. Smooth Back	Wt./Lin.Ft. Knob Back
GP-36	36"	4.2 lbs.	4.7 lbs.
GP-48	48"	5.5 lbs.	6.3 lbs.
GP-72	72" Seamed	8.3 lbs.	9.4 lbs.

Colors: See Color Chart.

Custom sizes available in lengths up to 10 lin. ft.



BILLBOARD

- Put the eye-catching effects of Billboard anti-fatigue mats to work for your business with virtually any design and intricate detail.
- When wall space is limited for signage and you need to attract customers to a specific area or product, there is no better way than a Billboard anti-fatigue mat. When they arrive, make them comfortable by providing the simplest and most effective way to reduce fatigue and stress.
- Billboard utilizes a state of the art printing process on a 3/32" heavy duty tile surface, permanently bonded to a 3/8" resilient closed cell polymer sponge base. Over all thickness is 1/2". Edges will be beveled.
- Billboard anti-fatigue mats are available in four stock and custom sizes.
- 12 standard colors to chose from. Custom or PMS color match available.
- 4 color process available and shown.

Billboard Mats		
Stock No.	Size	Wt. Each
BB-2436	2' x 3'	9.5 lbs.
BB-3648	3' x 4'	19.0 lbs.
BB-3660	3' x 5'	24.0 lbs.
1/2" Thick.		



Burgundy



White



Black



Red



Light Gray



Dark Gray



Yellow



Brown



Tan



Navy Blue



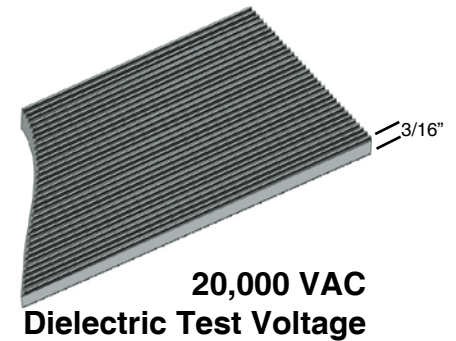
Forest Green



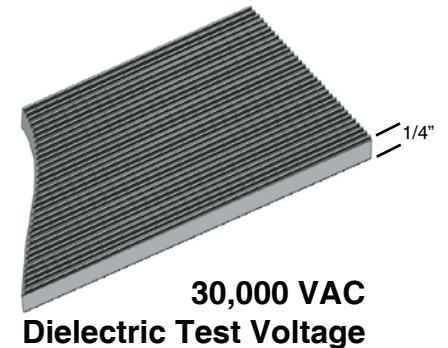
Royal Blue



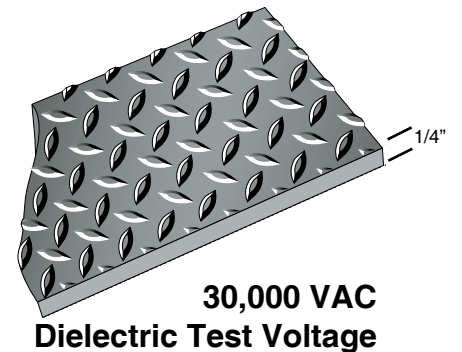
ASTM SWITCHBOARD Rubber Insulating Mats



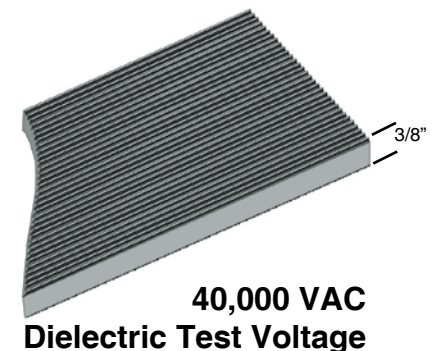
20,000 VAC
Dielectric Test Voltage



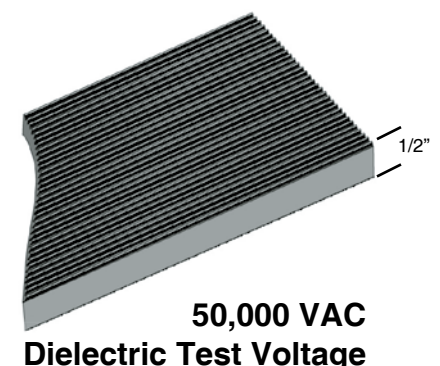
30,000 VAC
Dielectric Test Voltage



30,000 VAC
Dielectric Test Voltage



40,000 VAC
Dielectric Test Voltage



50,000 VAC
Dielectric Test Voltage

CORRUGATED SWITCHBOARD MATTING

- A specially compounded non-conductive corrugated matting designed to help prevent electric shock around high voltage electrical equipment, such as fuse boxes, and control panels.
- Now meets all optional requirements for Ozone Resistance, Flame Resistance, and Oil Resistance.
- Tested to ASTM D178/ANSI J6.7. Certification engraved on back.

CLASS 1 - 3/16" Thick Switchboard - Corrugated

- DIELECTRIC TEST VOLTAGE 20,000 VAC
- PROOF TESTED OVER ENTIRE SURFACE AT 10,000 VAC
- RECOMMENDED MAXIMUM USE VOLTAGE 7,500 VAC

Stock #	Size	Weight/Ln.Ft.
SB336	3' x 75'	3.9 lbs.

Color: Black. Sold in full rolls only.

CLASS 2 - 1/4" Thick Switchboard - Corrugated & Diamond Pattern

- DIELECTRIC TEST VOLTAGE 30,000 VAC
- PROOF TESTED OVER ENTIRE SURFACE AT 20,000 VAC
- RECOMMENDED MAXIMUM USE VOLTAGE 17,000 VAC

Stock #	Size	Weight/Ln.Ft.
SB424	2' x 75'	3.5 lbs.
SB436	3' x 75'	5.2 lbs.
SB448	4' x 75'	6.8 lbs.

Color: Black.

CLASS 3 - 3/8" Thick Switchboard - Corrugated

- DIELECTRIC TEST VOLTAGE 40,000 VAC
- PROOF TESTED OVER ENTIRE SURFACE AT 30,000 VAC
- RECOMMENDED MAXIMUM USE VOLTAGE 26,500 VAC

Stock #	Size	Weight/Ln.Ft.
SB536	3' x 75'	7.7 lbs.

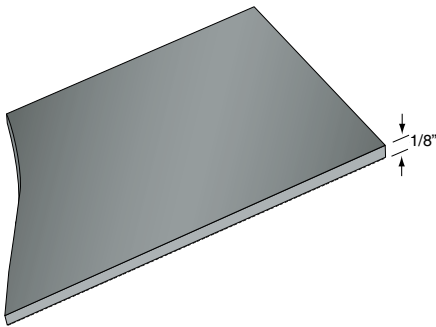
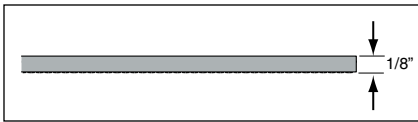
Color: Black. Sold in full rolls only.

CLASS 4 - 1/2" Thick Switchboard - Corrugated

- DIELECTRIC TEST VOLTAGE 50,000 VAC
- PROOF TESTED OVER ENTIRE SURFACE AT 40,000 VAC
- RECOMMENDED MAXIMUM USE VOLTAGE 36,000 VAC

Stock #	Size	Weight/Ln.Ft.
SB636	3' x 30'	10.7 lbs.

Color: Black. Sold in full rolls only.



MIL SPEC SMOOTH TOP SWITCHBOARD MATTING

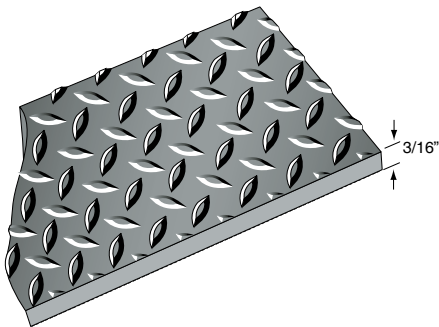
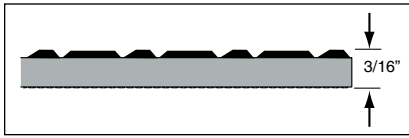
- Conforms to MIL SPEC. MIL-DTL-155626, Type II.
- This specification is approved for use by all interested Commands of the Department of the Navy and the Marine Corps and is available for use by all other Departments and Agencies of the Department of Defense.



- Dielectric Test Voltage 30,000 VAC
- Proof Tested Over Entire Surface At 15,000 VAC
- Recommended Maximum Use Voltage 3,000 VAC

MIL SPEC SMOOTH TOP SWITCHBOARD MATTING

Stock No.	Size	Weight/per roll
SSB36	36" x 75'	245.00 lbs
Color: Black, Blue, Green. Full rolls only. 1/8" Thick.		



MIL SPEC DIAMOND SWITCHBOARD MATTING

- Conforms to MIL SPEC. MIL-DTL-155626, Type III as amended.
- This specification is approved for use by all interested Commands of the Department of the Navy and the Marine Corps and is available for use by all Departments and Agencies of the Department of Defense.



- Dielectric Test Voltage 30,000 VAC
- Proof Tested Over Entire Surface At 15,000 VAC
- Recommended Maximum Use Voltage 3,000 VAC

MIL SPEC DIAMOND SWITCHBOARD MATTING

Stock No.	Size	Weight/per roll
DSB36	36" x 75'	252.00 lbs.
Color: Gray. Full rolls only. 3/16" Thick.		

DUAL PURPOSE Dielectric Anti-Fatigue Mats



DUAL PUPOSE DIELECTRIC

- Quarter inch thick, ASTMD-178, corrugated or diamond surfaced switch-board mats laminated to a 3/8" thick, super resilient polymeric sponge base provides employees a comfortable work surface to stand on while providing protection from accidental electrical shock.
- Rhino switchboard conforms to OSHA requirements for electrical protective devices with certification engraved on back.
- Rhino Dual-Purpose switch board matting also meets the optional requirements cited by ASTM for flame resistance, ozone resistance and oil resistance.



**AVAILABLE IN CORRUGATED
OR DIAMOND SURFACE**

DUAL PURPOSE DIELECTRIC ANTI-FATIGUE

Stock No.	Sizes	App. Wt.
DP-2436	2' X 3'	15.0 lbs.
DP-3648	3' X 4'	30.0 lbs.
DP-3660	3' X 5'	37.5 lbs.

DUAL PURPOSE CUT LENGTHS

Stock No.	Sizes	App. Wt./lin.ft.
DP-36	3' x 75'	7.5 lbs.
DP-48	4' x 75'	10.0 lbs.
Color: Black only. For Diamond surface, add the letter "D". 5/8" Thick.		





FOR STANDARD & PREMIUM GAUGES WITH GRIPPER BACK

Rhino brand Chair-mats are manufactured from a specially formulated vinyl compound that assures years of services. Use of Chair-mats in the office environment produce productivity gains that more than offset the cost of the mat and significantly reduce lower back and joint strain. Mats can be cut to dealer/consumer specifications + or - 1/4", a beveled edge can be added to access edges of custom mats. Chair-mats are manufactured in a Standard or Premium gauge with cleat back. Our TBS is ideal for hard floors. Pre-cut sizes are also available.



All of our chair mats are manufactured in the United States of America.

STANDARD GAUGE WITH CLEATS - SHEET SIZES FOR CUSTOM CUT PRODUCT - .130 GAUGE

Stock #	Size	Weight
46AVS	48" x 60"	20.0 lbs.
47AVS	48" x 72"	24.0 lbs.
49AVS	48" x 96"	32.0 lbs.
66AVS	60" x 60"	25.0 lbs.
67AVS	60" x 72"	30.0 lbs.
69AVS	60" x 96"	40.0 lbs.
ROLL STOCK		
Stock #	Size	Weight/Ln. Ft.
6AVRS	60" x 50'	5.0 lbs.
<ul style="list-style-type: none"> • Price includes cut to dealer/consumer specifications + or - 1/4". • A beveled edge can be added to access edges of custom mats for a 10% upcharge. • Mats can be rolled and individually packaged for UPS shipment if within weight requirements. • Per customer specification, mats can be individually packaged flat and shipped L.T.L. motor freight. • Large orders will be palletized and shipped flat. • No minimum on custom cut program. 		



PREMIUM DELUXE GAUGE WITH CLEATS - SHEET SIZES FOR CUSTOM CUT PRODUCT - .200 GAUGE

Stock #	Size	Weight
46AVP	48" x 60"	24.0 lbs.
47AVP	48" x 72"	29.0 lbs.
49AVP	48" x 96"	39.0 lbs.
66AVP	60" x 60"	30.0 lbs.
67AVP	60" x 72"	36.0 lbs.
69AVP	60" x 96"	48.0 lbs.
77AVP	72" x 72"	44.0 lbs.
79AVP	72" x 96"	58.0 lbs.
ROLL STOCK		
Stock #	Size	Weight/Ln. Ft.
6AVRP	60" x 50'	6.0 lbs.
7AVRP	72" x 50'	7.2 lbs.
<ul style="list-style-type: none"> • Price includes cut to dealer/consumer specifications + or - 1/4". • A beveled edge can be added to access edges of custom mats for a 10% upcharge. • Mats can be rolled and individually packaged for UPS shipment if within weight requirements. • Per customer specification, mats can be individually packaged flat and shipped L.T.L. motor freight. • Large orders will be palletized and shipped flat. • No minimum on custom cut program. 		





T.B.S. HARD FLOOR SHEET SIZES FOR CUSTOM CUT PRODUCT - .110GAUGE

Stock #	Size	Weight
46TBS	48" x 60"	20.0 lbs.
47TBS	48" x 72"	24.0 lbs.
49TBS	48" x 96"	32.0 lbs.
66TBS	60" x 60"	25.0 lbs.
67TBS	60" x 72"	30.0 lbs.
69TBS	60" x 96"	40.0 lbs.

ROLL STOCK

Stock #	Size	Weight/Ln. Ft.
6TBSRL	60" x 50'	5.0 lbs.

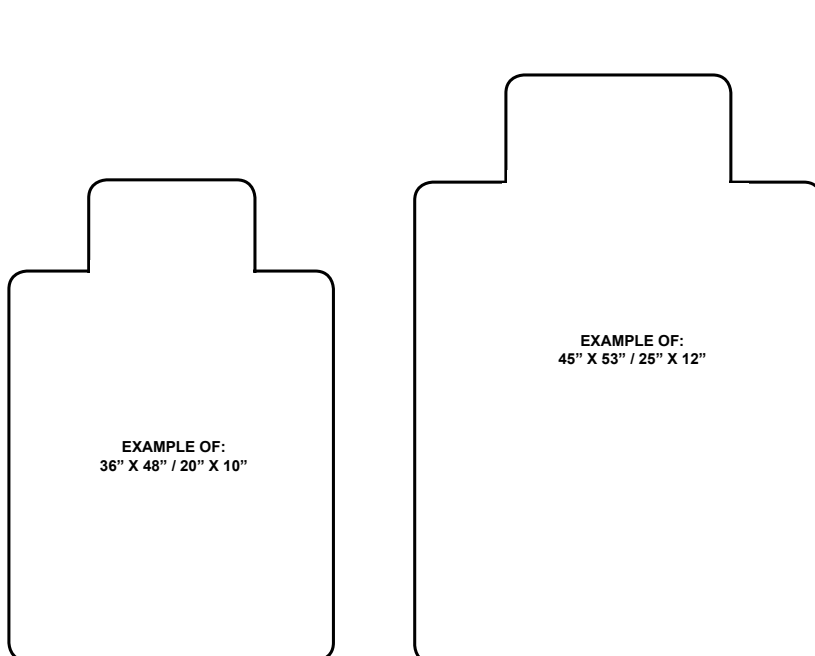
- Cut to dealer/consumer specifications + or - 1/4".
- A beveled edge can be added to access edges of custom mats for a minimal up charge.
- Mats can be rolled and individually packaged for U.P.S. shipment if within weight requirements.
- Per customer specification, mats can be individually packaged flat and shipped L.T.L. motor freight.
- Large orders will be palletized and shipped flat.
- No minimum on custom cut program.



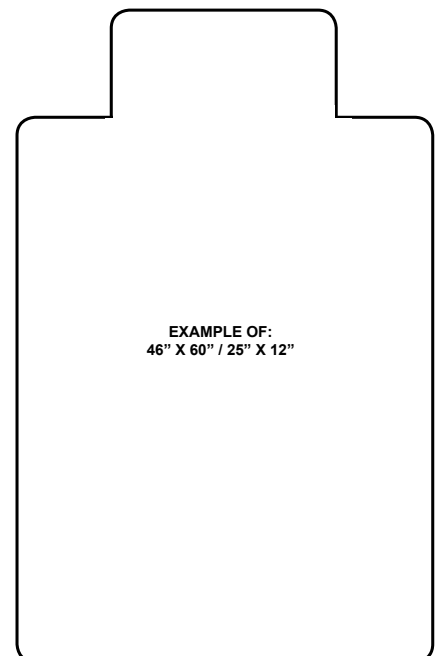
STANDARD GAUGE STANDARD PRE-CUT CHAIRMATS WITH CLEATS - .110 GAUGE

Stock #	Size	Weight
34AVS20L	36"x48" 20"x10"	11.1 lbs.
45AVS25L	45"x53" 25"x12"	15.1 lbs.
46AVS25L	46"x60" 25"x12"	19.1 lbs.
46AVSR	46"x60" Rectangle	20.4 lbs.

- Large orders will be palletized and shipped flat.
- Bevelled edges.



EXAMPLE OF:
45" X 53" / 25" X 12"



EXAMPLE OF:
46" X 60" / 25" X 12"



Chairmat Measuring Requirements

WE NEED TO KNOW:

_ STYLE of FLOOR MAT / DESK _____

___ LEFT or ___ RIGHT RETURN

_ DISTANCE BETWEEN DESK LEGS or PEDESTALS

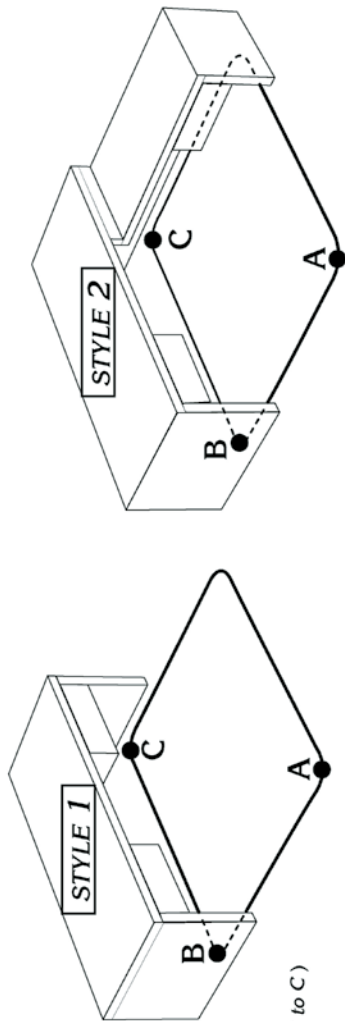
_ LIP LENGTH, usually _____ 10" _____ 12" or more _____ (B to C)

_ DESIRED DISTANCE ON EACH SIDE (A to B)

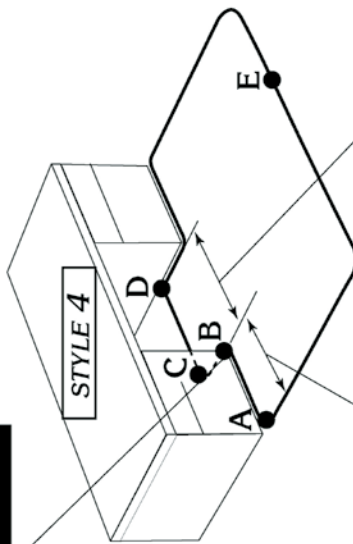
_ LIP WIDTH / DISTANCE BETWEEN DESK LEGS / PEDESTALS (C to D)

_ OVERALL LENGTH / DISTANCE UNDER and BEHIND DESK (D to E)

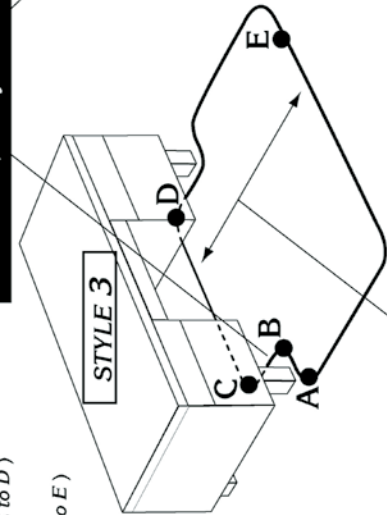
STYLE # _____



B to C = _____
LIP LENGTH, usually 10" to 12" or more



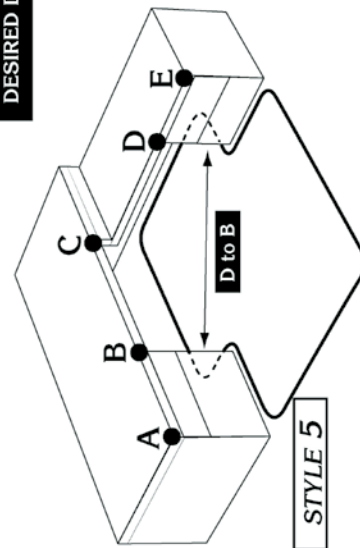
C to D = _____
LIP WIDTH BETWEEN DESK LEGS or PEDESTALS



D to E = _____
OVERALL LENGTH / DISTANCE UNDER and BEHIND DESK

A to B = _____

DESIRED DISTANCE ON EACH SIDE



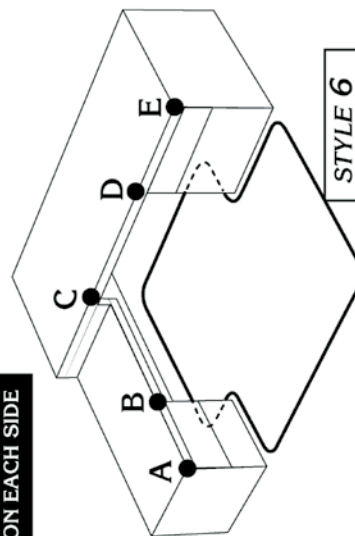
A to B = _____

B to C = _____

C to D = _____

D to E = _____

D to B = _____



MEASUREMENTS of DESK or MAT:

CUSTOM CUT CHAIRMAT ORDER FORM (copy)



COMPANY NAME: _____ DATE: _____

PERSON PLACING ORDER: _____

ADDRESS: _____ CITY: _____ STATE: _____ ZIP CODE: _____

P.O. #: _____ PHONE: () _____ FAX: () _____

Make a rough sketch of the desired mat in the area provided below. Be sure each dimension is clearly marked with the number of inches and that all dimensions properly add up.

If you need help, consult the measuring tips on next page or fax your drawings to 800-228-1542, then call Customer Service at 800-228-5543.

WIDTH

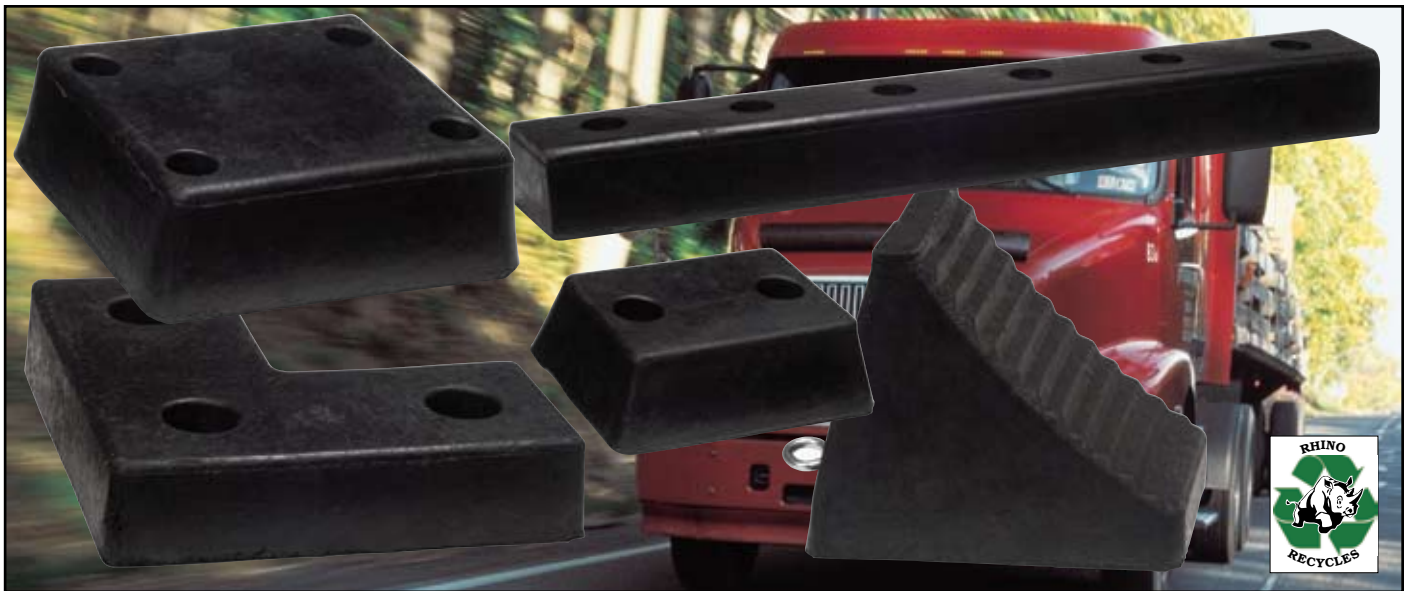
LENGTH

Mats that can be rolled and individually packaged for U.P.S. shipment that are within weight requirements.

ANCHOR VINYL	48" x 60"	48" x 72"	48" x 96"	60" x 60"	60" x 72"	60" x 96"	60" x 120"	72" x 72"	72" x 96"	72" x 120"
PREMIUM										
STANDARD								N/A	N/A	N/A
ANTISTATIC								N/A	N/A	N/A
TBS								N/A	N/A	N/A

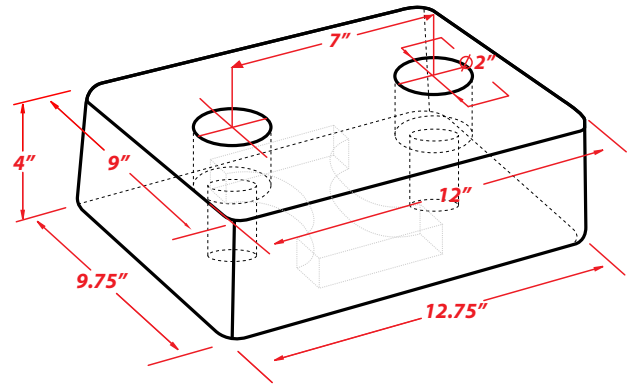
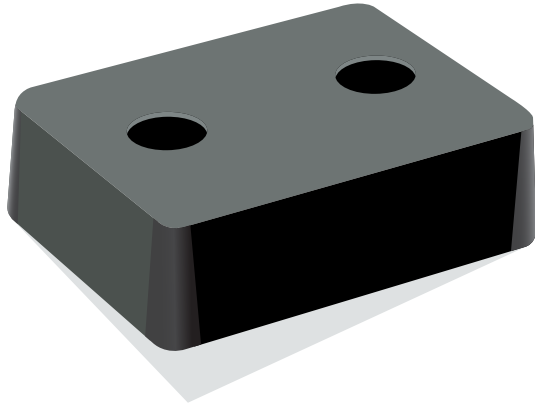


TRITAN® BUMPERS AND WHEEL CHOCKS



- Tritan Bumpers and Wheel Chocks are manufactured from a tough durable “almost indestructible” combination of recycled tire rubber compounds, reinforced with nylon and polyester fabric. This combination of ingredients provide our bumpers and chocks with excellent properties for long lasting use and are designed to maximize safety in loading dock and material handling areas.
- Tritan bumpers and chocks suffer no deterioration from ozone exposure and weathering, no signs of deterioration at 400 degrees, Fahrenheit. No fracture or visible cracks due to cold temperature, -45 degrees, Fahrenheit. Tritan’s high fabric content creates a product that is tear, cut and abrasion resistant while maintaining it’s elasticity and impact absorption properties.
- Tritan bumpers eliminate dock damage, costly repairs and provide the needed protection for approaching vehicles.
- Tritan heavy duty wheel chocks provide maximum gripping power, totally immobilizing trailers, trucks to prevent wheel slippage accidents while vehicles are being loaded, unloaded.
- In addition to the industry standard items shown on this catalog, we can manufacture any similar molded product per customer specification.

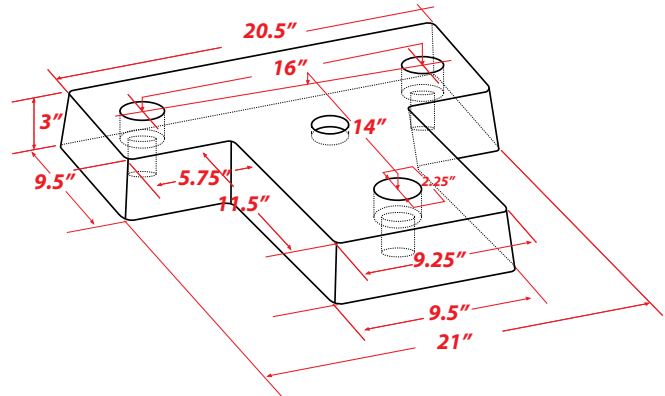
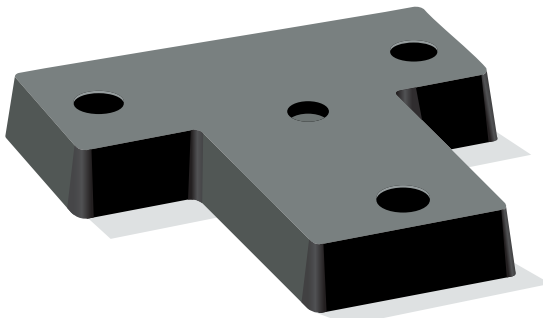
PROPERTY		ASTM	RESULT
TENSIL STRENGTH (PSI)			
WITH GRAIN, MIN		D412	992.9
ACROSS GRAIN, MIN		DIE C	737.4
ELONGATION (%)			
WITH GRAIN, MIN		D412	46.6%
ACROSS GRAIN, MIN		DIE C	83.3%
HARDNESS, SHORE A		D2240	73-84
TEAR RESISTANCE (LBF/PULG)			
WITH GRAIN, MIN		D624	251.73
ACROSS GRAIN, MIN		DIE B	370.31
COMPRESSION RESISTANCE (PSI)		D695-96	756.24
HEAT AGING CHANGE IN:	TENSILE, % MAX	D573	-0.4%
	ELONGATION, % MAX	70 HRS	-5.9%
	HARDNESS, PTS. MAX	@ 70 C	. +3
			1.15 - 1.19
SPECIFIC GRAVITY			
BRITTLENESS @-40C		ASTD2137 -94 (00)	NO CRACKS NO CRACKS
OZONE AGING RESISTANCE 50 HRS @ 80 PPHM		D 624-00	219.5 -13%
FLAMABILITY FLAMABILITY OF INTERIORS REQUIREMENTS		FMVSS 302	24 PASS
ABRASION NBS (INDEX)		D1630	258.9



Stock No.
BGPF

Size
4x9.75x12.75

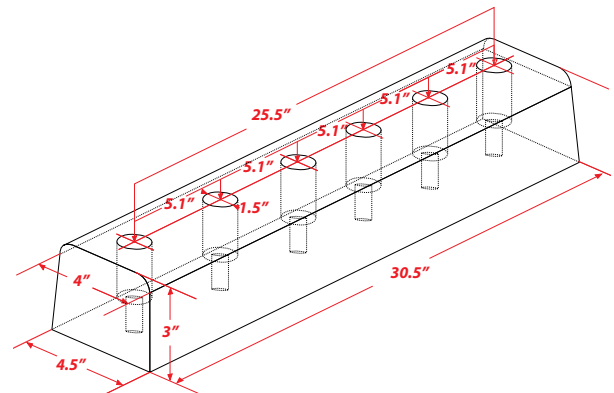
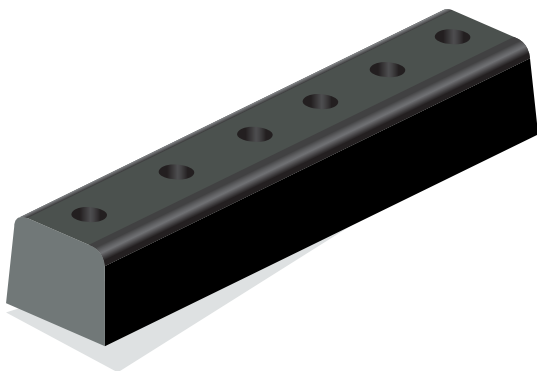
Weight Ea.
18.7 lbs.



Stock No.
RFTF

Size
3x21x20.5

Weight Ea.
33.0 lbs.



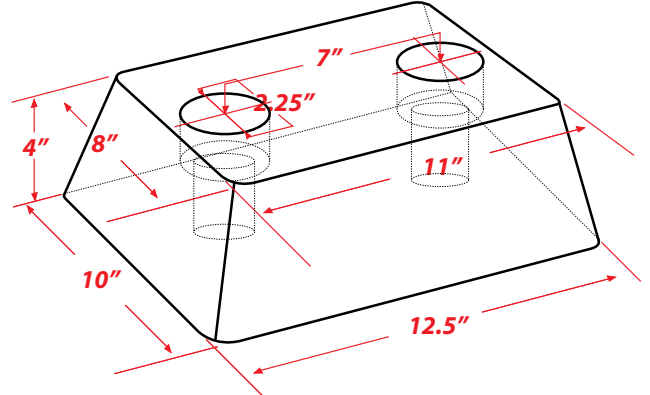
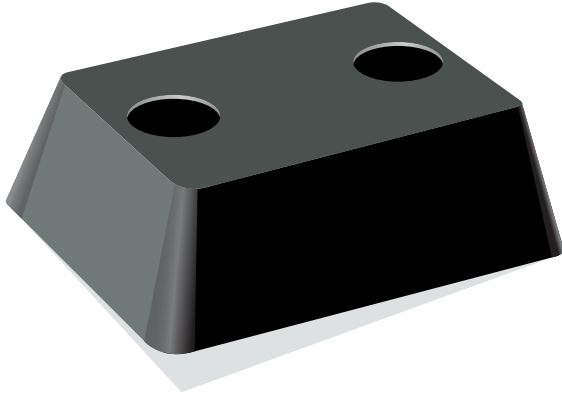
Stock No.
DB3M

Size
3x30.5x4.5

Weight Ea.
15.6 lbs.



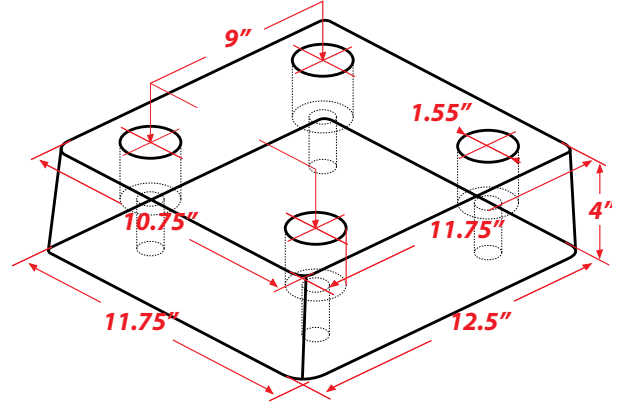
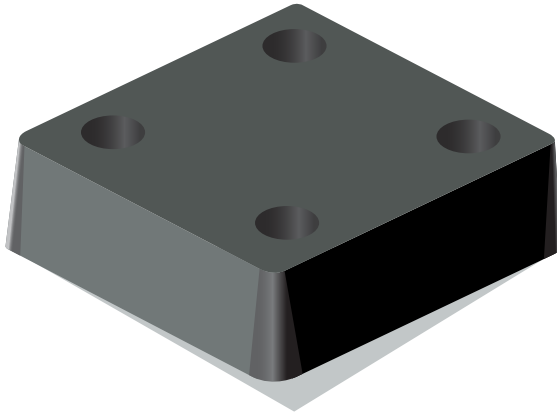
TRITAN® DOCK PROTECTORS



Stock No.
NPLF

Size
4x10x12.5

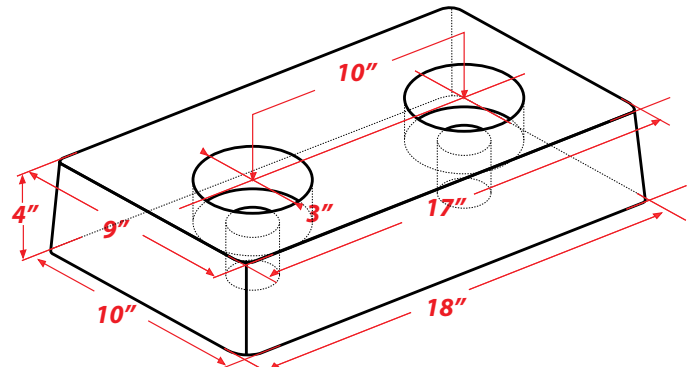
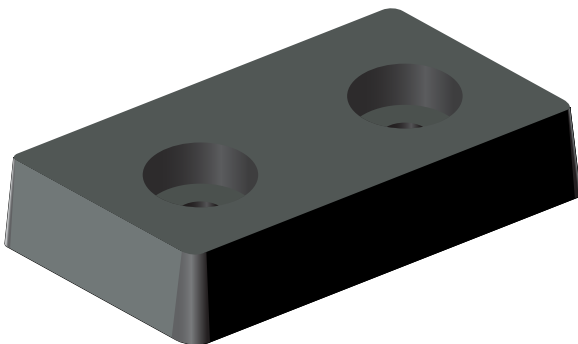
Weight Ea.
13.4 lbs.



Stock No.
NR4F

Size
4x11.75x12.5

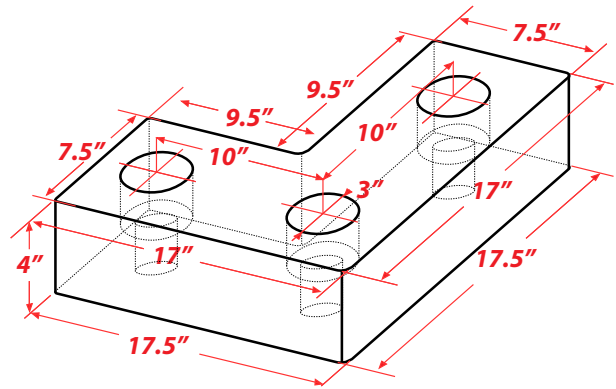
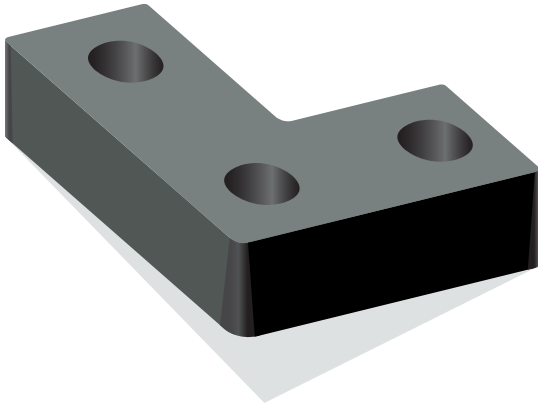
Weight Ea.
20.6 lbs.



Stock No.
PL4F

Size
4x10x18

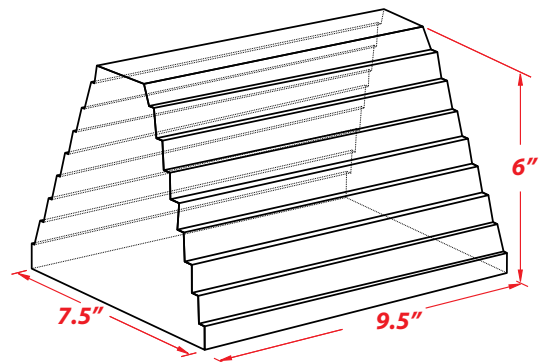
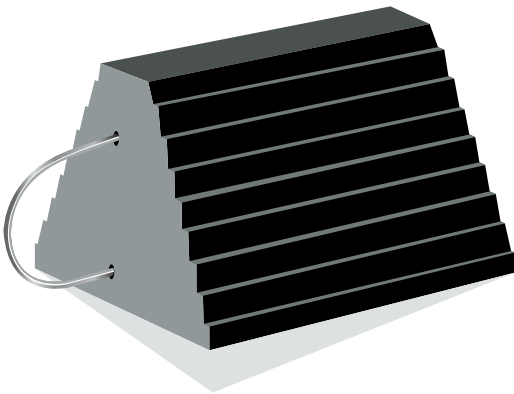
Weight Ea.
26.5 lbs.



Stock No.
RLFF

Size
4x17.5x17.5

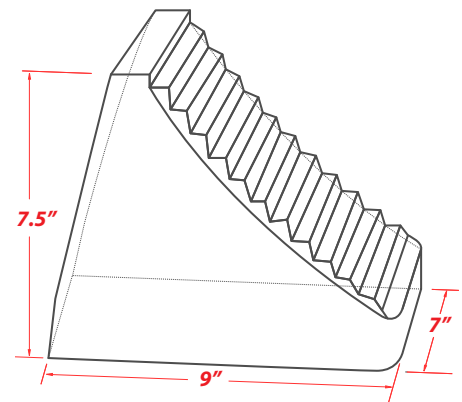
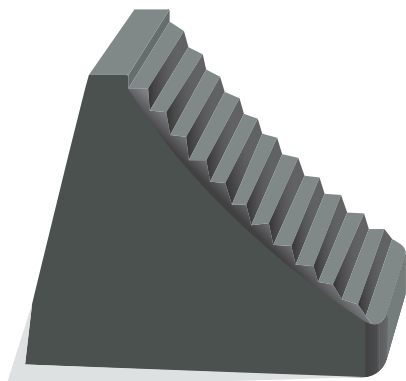
Weight Ea.
34.0 lbs.



Stock No.
CHUF

Size
6x9.5x7.75

Weight Ea.
9.5 lbs.



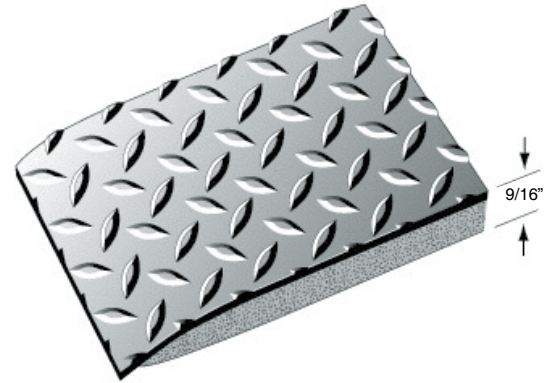
Stock No.
WCHF

Size
7.75x9.25x7.25

Weight Ea.
10.8 lbs.



NEW!



DIAMOND PLATE BRITE ANTI-FATIGUE

- The reflective properties in Diamond Plate Brite Anti-Fatigue mats support lighting quality, help eliminate the need for task lighting and create uniform shadow free illumination in production & personnel areas where you need it most.
- Improvements in workplace illumination can create an increase in general well being, better health, reduced absenteeism, increased productivity and help alleviate the common subclinical problems among night shift workers.
- Diamond Plate Brite is made from the same exceptionally durable compound as our Standard Diamond plate series but features a semi-reflective top surface that offers full-spectrum reflectivity combined with the incredibly soft and resilient rebound properties demanded of a anti-fatigue mat in rigorous commercial and industrial use.
- This product, like our Diamond Plate series, offers excellent durability, suffers no deterioration from weathering, ozone exposure and is self-extinguishing when tested in accordance with FMVSS-302.
- Diamond Plate Brite Anti-Fatigue mats are available in two styles. The Heavy-Duty style is ½" thick and the Super duty is a full 1" thick. Both styles are available in individual mats or full roll lengths of 36" and 72" widths.
- 3 year warranty.



DIAMOND PLATE BRITE ANTI-FATIGUE MATS

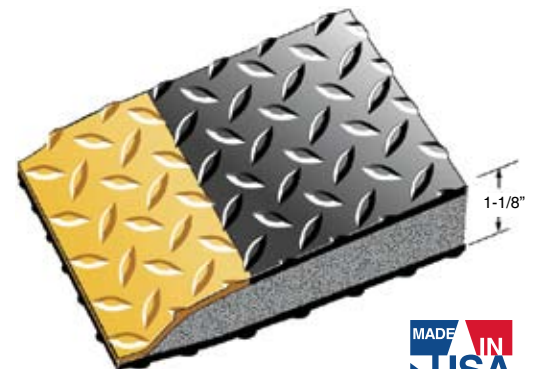
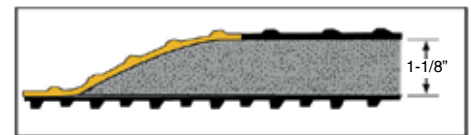
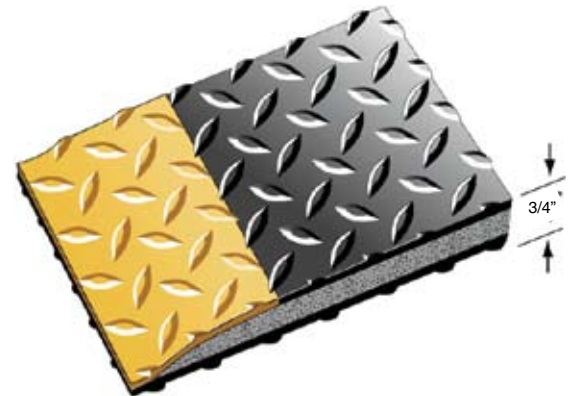
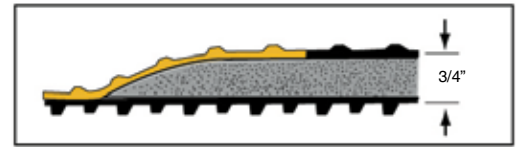
Stock No.	Sizes	Weight Ea. 9/16"	Weight Ea. 1"
DTB2436	2' x 3'	9.0 lbs.	10.0 lbs.
DTB3660	3' x 5'	19.0 lbs.	22.0 lbs.
Custom Sizes - available in lengths up to 75 lin. ft.			
Stock No.	Width	Weight/Lin.Ft. 9/16"	Weight/Lin Ft. 1"
DTB36	36"	3.3 lbs.	3.9 lbs.
DTB72	72" Seamed	6.6 lbs.	7.8 lbs.
Full Rolls	Sizes	Weight Ea. 9/16"	Weight Ea. 1"
DTB375	3' x 75'	248.0 lbs.	340.0 lbs.
DTB675	6' x 75' Seamed	500.0 lbs.	600.0 lbs.

Color: Shiny Metallic only. 1" Thick/Double Sponge, add DS





DIAMOND PLATE/KNOB BACK™ Anti-Fatigue Mats



DIAMOND PLATE / KNOB BACK

- The comfort and durability of Diamond Plate Anti-Fatigue matting in a configuration that makes it suitable for wet area applications, areas that were previously restricted to the traditional molded products with their marginal anti-fatigue performance.
- This new Diamond Plate/Knob Back Anti-Fatigue matting is self-extinguishing, nonflammable, and chemical resistant.
- Diamond Plate/Knob Back has a 5/32" thick diamond plate surface permanently bonded to your choice of a 3/8 " or 3/4" thick resilient closed cell polymeric sponge base.
- The knob back base is permanently bonded to the diamond plate surface creating a sealed envelope that totally encapsulates the sponge core.
- The Diamond Plate/Knob Back matting is available in two styles. The heavy-duty style is 3/4" thick and the super-duty is 1 1/8" thick.
- All edges are beveled and sealed for safety and durability.
- There are four different surface colors to choose from.
- 2 year warranty.

DIAMOND PLATE/KNOB BACK ANTI-FATIGUE MATS

For 1 1/8" mats, add "DS" to stock number

Stock No.	Sizes	Weight Ea. 3/4"	Weight Ea. 1 1/8"
DTK2436	2' x 3'	10.5 lbs.	14.7 lbs.
DTK3660	3' x 5'	30.0 lbs.	39.0 lbs.

CUSTOM SIZES-available in lengths up to 60 lin. Ft.

Stock No.	Widths	Wt./Lin. Ft. 3/4"	Wt./Lin. Ft. 1 1/8"
DTK36	36"	6.5 lbs.	7.9 lbs.

Colors: Black, Black/Yellow, Gray/Yellow, Solid Gray.
1 1/8" Thick/Double Sponge (DS)



Black/Yellow



Gray/Yellow



Black



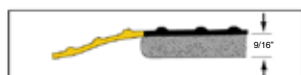
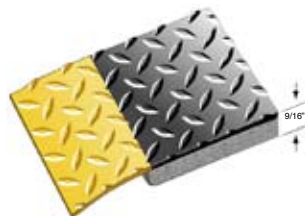
Gray

DIAMOND PLATE CONTRACT DUTY™ Anti-Fatigue Mats



DIAMOND PLATE CONTRACT DUTY

- Diamond Plate Contract Duty offers competitive pricing and a high quality alternative to import products. This strong performer far exceeds the competition with its closed cell polymeric sponge base producing the soft and resilient rebound properties needed in a manufacturing environment.
- Contract Duty Diamond shows no deterioration from ozone exposure and is self-extinguishing when tested in accordance with FMVSS-302.



DIAMOND PLATE CONTRACT DUTY ANTI-FATIGUE

9/16" mats only

Stock No.	Sizes	Wt. Ea.
DTT-2436CD	2' x 3'	8.0 lbs.
DTT-3660CD	3' x 5'	16.0 lbs.
CUSTOM SIZES – available in lengths up to 75 lin. ft.		
Stock No.	Widths	Wt. Lin. Ft.
DTT-24CD	24"	2.0 lbs.
DTT-36CD	36"	3.0 lbs.
DTT-48CD	48"	4.0 lbs.
Color: Black and Black/Yellow.		
9/16" Thick		



CORRUGATED CONTRACT DUTY™ Anti-Fatigue Mats



CORRUGATED ANTI-FATIGUE MATS

1/2" mats only

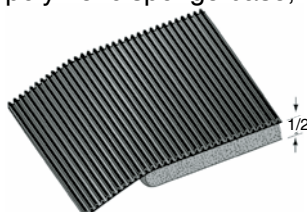
Stock No.	Sizes	Wt. Ea.
CTT2436CD	2' x 3'	8.0 lbs.
CTT3660CD	3' x 5'	16.0 lbs.
CUSTOM SIZES – available in lengths up to 75 lin. ft.		
Stock No.	Widths	Wt./Lin. Ft.
CTT24CD	24"	2.0 lbs.
CTT36CD	36"	3.0 lbs.
CTT48CD	48"	4.0 lbs.

Colors: Black
1/2" Thick



CORRUGATED ANTI-FATIGUE

- Corrugated top anti-fatigue mats have been around for many years and remain a favorite in commercial and industrial environments. The presence of imports in the marketplace is something we have been watching and to give our distributors an advantage, we developed our Contract Duty mats.
- Contract Duty Corrugated offers the quality of a laminated product at a price point that is sure to fit any budget.
- 1/8" thick corrugated top laminated to a 3/8" closed cell polymeric sponge base, overall thickness 1/2".

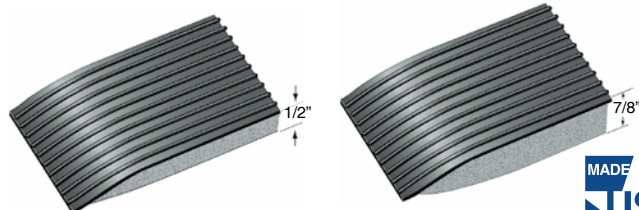


EASY KLEEN Anti-Fatigue Mats



EASY KLEEN ANTI-FATIGUE

- Wide ribbed vinyl surface ensuring quick and easy removal of dirt and debris from mats.
- 1/8" thick round ribbed vinyl surface with a resilient closed cell polymeric sponge base.
- Your choice of 1/2" or 7/8" overall thickness.



* Double Sponge Option



EASY KLEEN ANTI-FATIGUE

For 7/8" mats, add "DS" to stock number

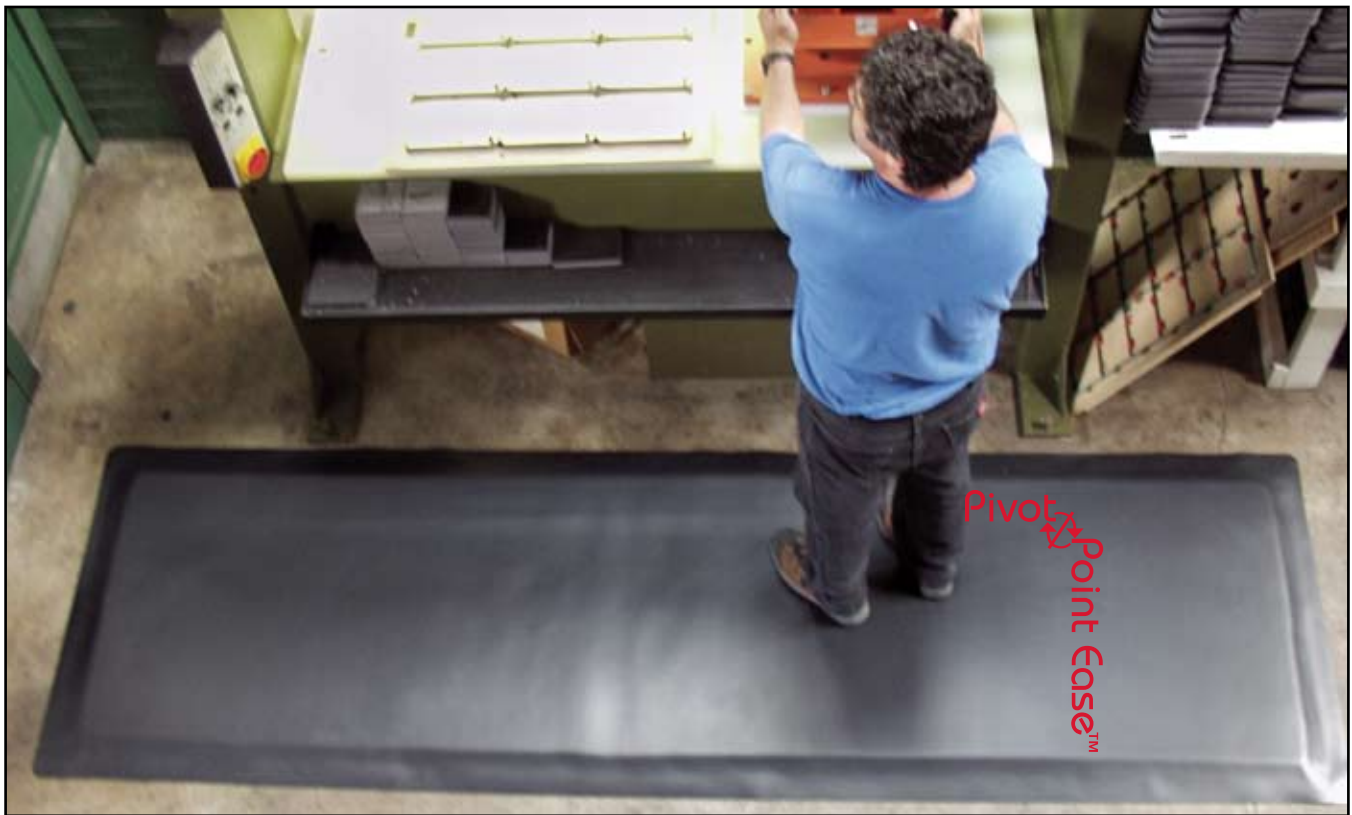
Stock No.	Sizes	Wt. Ea. 1/2"	Wt. Ea. 7/8"
ETT-2436	2' x 3'	8.0 lbs.	9.0 lbs.
ETT-3660	3' x 5'	16.0 lbs.	19.0 lbs.
CUSTOM SIZES – available in lengths up to 75 lin. ft.			
Stock No.	Widths	Wt. Lin. Ft. 1/2"	Wt. Lin. Ft. 7/8"
ETT-24	24"	2.0 lbs.	2.4 lbs.
ETT-36	36"	3.0 lbs.	3.6 lbs.
ETT-48	48"	4.0 lbs.	4.8 lbs.
ETT-60	60" Black only	5.0 lbs.	16.0 lbs.

Colors: Black, Gray.

7/8" Thick/Double Sponge (DS)

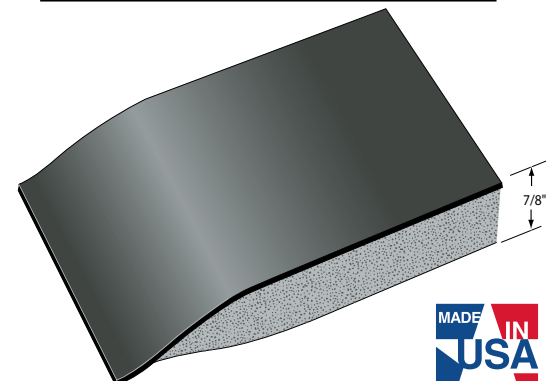
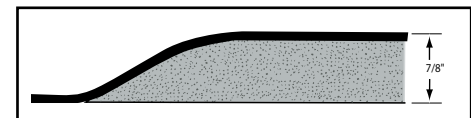
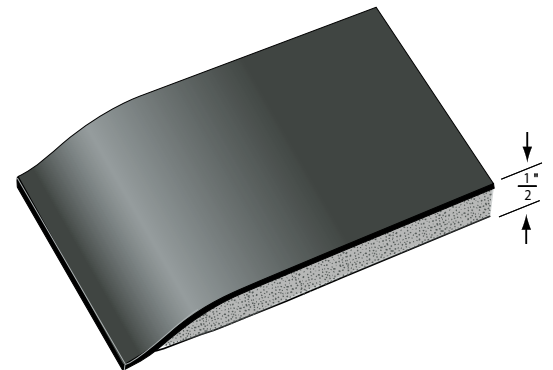
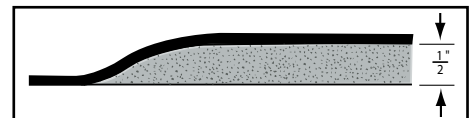


INDUSTRIAL SMOOTH™ Anti-Fatigue Mats



INDUSTRIAL SMOOTH™ ANTI-FATIGUE

- Our new Industrial Smooth Anti-Fatigue is made from the same exceptionally durable compound as our Diamond Plate, but features a fine satin finish that allows for torque-free movement at industrial workstations.
- Anti-Fatigue Mat flexibility is only one consideration, the next is freedom of movement. Industrial Smooth Anti-Fatigue Mats facilitate the 180-degree to-and-fro movement required at service counters and assembly lines while avoiding the stress on knees and ankles that result when the same movements are made on mats with a molded non-slip surface.
- Industrial Smooth Anti-Fatigue Mats provide that “pivot point ease™” plus the incredibly soft and resilient rebound properties needed in a rigorous commercial environment. The product is a real plus for housekeeping as the smooth top makes cleaning a breeze.
- This product, like our Diamond Plate series, offers excellent durability, suffers no deterioration from weathering, ozone exposure and is self-extinguishing when tested in accordance with FMVSS-302.
- Industrial Smooth Anti-Fatigue Mats are available in two styles. The Heavy duty style is 1/2” thick and the Super Duty is a full 7/8” thick. Both styles are available in individual mats or full roll lengths of 24”, 36”, 48”, 60”, 72”, and 96” widths.
- 3 year warranty.



INDUSTRIAL SMOOTH™ ANTI-FATIGUE MATS

For 7/8” mats, add “DS” to stock number

Stock No.	Sizes	Weight Ea. 1/2”	Weight Ea. 7/8”
IS2436	2’ x 3’	9.0 lbs.	10.0 lbs.
IS3660	3’ x 5’	19.0 lbs.	22.0 lbs.

Custom Sizes - available in lengths up to 75 lin. ft.

Stock No.	Width	Weight/Lin.Ft. 1/2”	Weight/Lin Ft. 7/8”
IS24	24”	2.2 lbs.	2.6 lbs.
IS36	36”	3.3 lbs.	3.9 lbs.
IS48	48”	4.4 lbs.	5.2 lbs.
IS60	60”	5.5 lbs.	6.5 lbs.
IS72	72” Seamed	6.6 lbs.	7.8 lbs.
IS96	96” Seamed	8.8 lbs.	10.4 lbs.

Color: Black. 1” Thick/Double Sponge (Add DS to Stock No.)



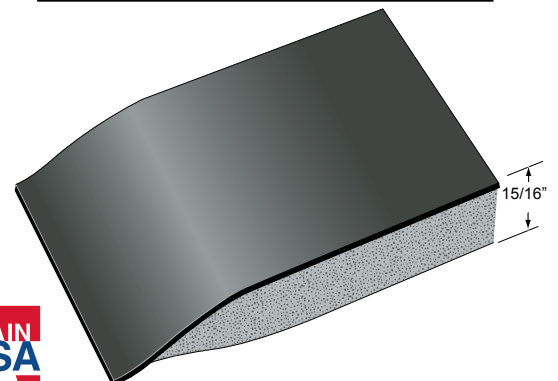
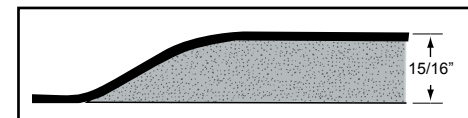
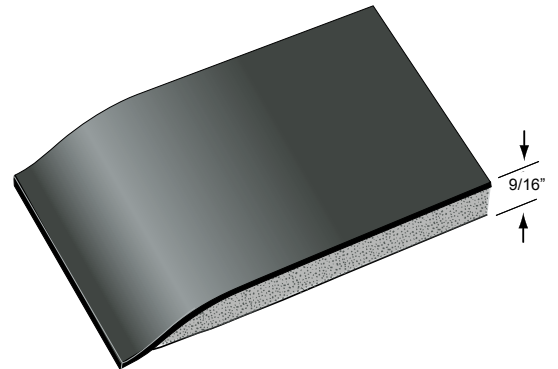
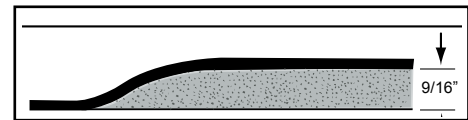


NEW!



HDT-ANTI FATIGUE MAT

- HDT-Anti Fatigue was developed to give assembly line personnel a mat that stools or chairs with casters could be used on. The product has also found a niche in laboratories and the retail sector for use in pharmacies.
- The top surface of HDT-Anti Fatigue is made from the same exceptionally durable compound as our Diamond Plate product except it's 3/16" thick with a smooth surface.
- This puncture proof surface material combined with our closed cell polymeric sponge base creates a mat to withstand the most rigorous commercial environments.
- HDT offers excellent durability and long life, suffers no deterioration from weathering, ozone exposure and is self-extinguishing when tested in accordance with FMVSS-302.
- HDT-Anti Fatigue Mats are available in two styles. The Deluxe version is 9/16" thick and the Super Deluxe version is 15/16" thick. Both versions are available in individual mats or full roll lengths of 24", 36", 48", 60", and 72" widths.
- 5 year warranty.



HDT-ANTI FATIGUE

For 15/16" mats, add "DS" to stock number

Stock No.	Sizes	Weight Ea. 9/16"	Weight Ea. 15/16"
HDT-2436	24" x 36"	10.0 lbs.	12.0 lbs.
HDT-3660	36" x 60"	26.0 lbs.	31.0 lbs.

CUSTOM SIZES – available in lengths up to 75 lin. Ft.

Stock No.	Widths	Wt./Lin. Ft. 9/16"	Wt./Lin Ft. 15/16"
HDT-24	24"	3.5 lbs.	4.0 lbs.
HDT-36	36"	5.0 lbs.	6.0 lbs.
HDT-48	48"	6.5 lbs.	8.0 lbs.
HDT-60	60"	8.5 lbs.	10.0 lbs.
HDT-72	72"	10.0 lbs.	12.0 lbs.

Color: Black 15/16" Thick/Double Sponge (DS)



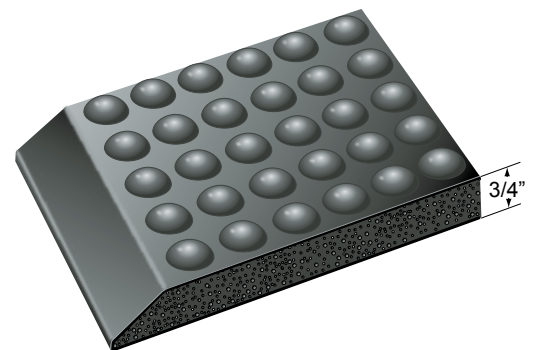
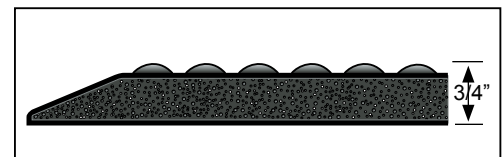


GRANDSTAND® Anti-Fatigue Mats



GRANDSTAND

- Part of adjusting to the New Normal, is accommodating older personnel. By 2018, people 55 or older will account for 25% of the workforce and demographics show, we don't have enough younger people to replace those valuable skills and experience.
- Grandstand was developed to provide the ultimate solution for reducing or eliminating short term fatigue and discomfort. The elastic properties of the Integral Skin Polyurethane sponge in combination with the domed top surface, give GrandStand a buoyancy and bounce that resemble the natural springiness of walking on a fresh mowed lawn.
- The resilient properties of GrandStand are incredible. We have 2'X3' finished mats for samples and your evaluation.
- Grand Stand's polyurethane construction provides beveled edges that will never curl up and is available in one piece construction in almost any size and shape.
- Ideal in industrial, laboratory, pharmaceutical, commercial environments, individual check stands or any large areas.



GRANDSTAND 3/4"		
Stock No.	Size	Weight Ea.
GS-2436	2' x 3'	6.0 lbs.
GS-3648	3' x 4'	12.0 lbs.
CUSTOM SIZES – AVAILABLE IN LENGTHS UP TO 75 LN. FT.		
Stock No.	Widths	Weight /Lin. Ft.
GS-24	24"	2.0 lbs.
GS-36	36"	3.0 lbs.
Color: Black Only. 3/4" Thick.		

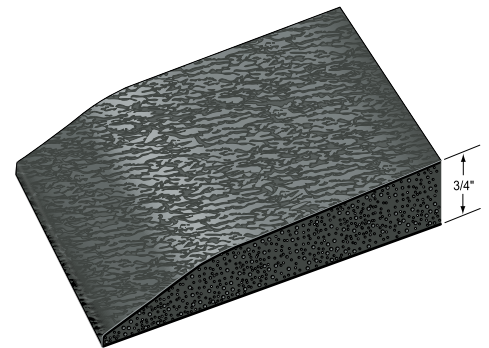
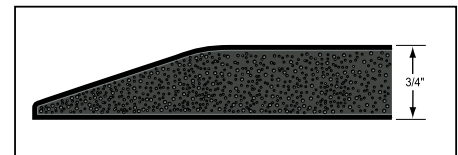


NEW!



COMFORT*CRAFT

- Comfort Craft mats are rated first in comfort because of the premium Polyurethane sponge compound used in manufacturing. The integral skin process totally encapsulates the 3/4" thick mat in an 1/8" skin that is chemical and abrasion resistance with a lay-flat beveled edge.
- Comfort Craft's crush-resistant sponge provides optimal balance in between compression and resistance which absorbs shock while providing the necessary support for stability.
- Recommended for 24/7 use at check-stands, laboratories, industrial or pharmacies.
- Comfort Craft mats transform standing personnel performance by making the job more comfortable and enjoyable.



COMFORT CRAFT 3/4"

Stock No.	Size	Weight Ea.
CC-2436	2' x 3'	12.0 lbs.
CC-3660	3' x 5'	23.0 lbs.
Color: Black. 3/4" Thick.		



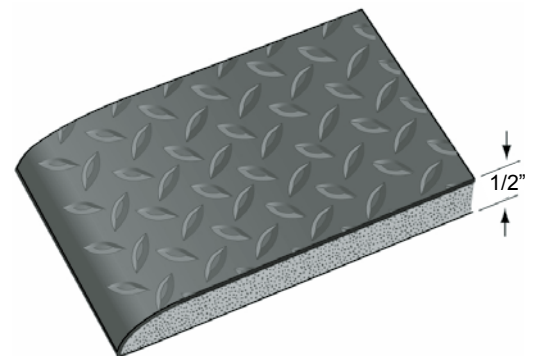
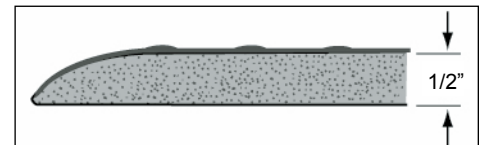


DIAMOND-TRED® Anti-Fatigue Mats



DIAMOND-TRED

- Not to be confused with our Diamond Plate Anti-fatigue, Diamond-Tred is another cost cutting product from Rhino mats that offers surprising comfort and value.
- A durable, integrated slip-resistant wear layer of high-density vinyl foam polymerically bound to a soft, moisture-resistant closed-cell vinyl sponge through Rhino's unique unibond process.
- Resistant to degradation by inorganic acids, organic acids, reducing agents, detergent solutions, alcohols, aliphatic hydrocarbons, mineral oil, amines, and aldehydes.
- All mats have a 1/10" wear surface laminated to a 1/2" sponge base and are approximately 1/2" thick. Diamond-Tred is available in full 60 foot rolls or cut lengths with bevel edges on cut ends.



DIAMOND-TRED MATS 1/2" THICK

Stock No.	Sizes	App. Wt.
DT-2436	24" x 36"	6.0 lbs.
DT-3660	36" x 60"	12.0 lbs.

DIAMOND-TRED ROLLS & CUT LENGTHS

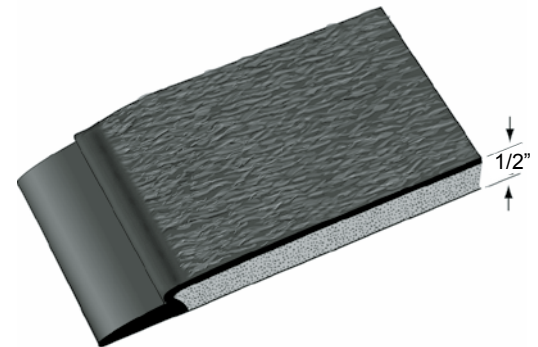
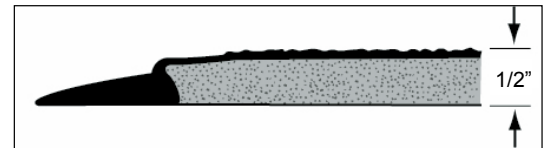
Stock No.	Sizes	App. Wt./lin.ft.
DT-36	3' x 60'	3.0 lbs.
DT-48	4' x 60'	4.0 lbs.
DT-60	6' x 60'	6.0 lbs.

Color: Black only. 1/2" Thick.



DURA STEP

- The new Dura Step anti-fatigue mat combines technology and craftsmanship in an exclusive 2-layer construction.
- A durable embossed wear surface of vinyl is polymerically integrated with a moisture resistant, closed cell vinyl sponge base.
- The advanced dual action performance of the Dura Step mat provides safety, comfort and a long duty cycle in a matting product that is superior to standard single-layered foam mats.
- This exclusive manufacturing technique combines a 3/32" embossed wear surface with a 3/8" closed-cell soft sponge base layer, creating an overall thickness of approx. 1/2 inch.
- Durable beveled edges on all four sides provide users with a lay-flat safety border insuring smooth surface to surface transition.
- Dura Step Anti-Fatigue Mats are 1/2" thick.



DURA STEP ANTI-FATIGUE MATS 1/2" THICK

Stock No.	Sizes	App. Wt.
DS-2436	24" x 36"	7.0 lbs.
DS-3660	36" x 60"	15.0 lbs.

DURA STEP ROLLS & CUT LENGTHS

Stock No.	Sizes	App. Wt./lin.ft.
DS-24	2' x 60'	2.0 lbs.
DS-36	3' x 60'	3.0 lbs.
DS-48	4' x 60'	4.0 lbs.

Color: Black only. 1/2" Thick.





COMFORT STEP® RIBBED Anti-Fatigue Mats



COMFORT STEP RIBBED

- Fatigue fighting floor mats and matting made of 100% closed cell vinyl foam.
- Ribbed surface for sure footedness plus beveled edges to minimize tripping and stumbling.
- Makes long-standing jobs more comfortable and boosts productivity while providing noise control and protection from cold, drafty floors.

COMFORT STEP RIBBED MATS 3/8" THICK

Stock No.	Sizes	App. Wt.
CSR-2436	24" x 36"	4.6 lbs.
CSR-2460	24" x 60"	7.7 lbs.
CSR-3660	36" x 60"	10.2 lbs.
CSR-310	36" x 120"	20.4 lbs.
CSR-4872	48" x 72"	16.3 lbs.

COMFORT STEP RIBBED MATTING 3/8" THICK

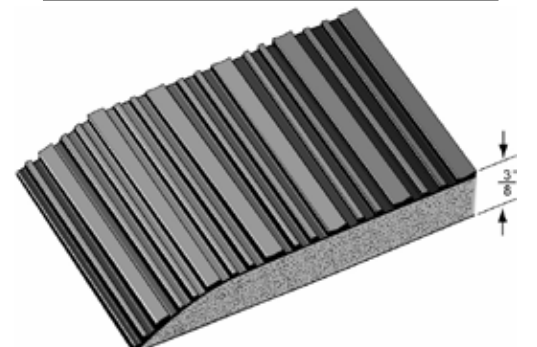
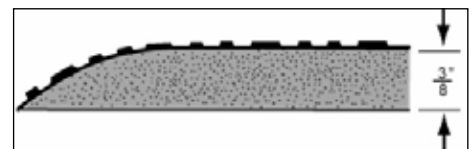
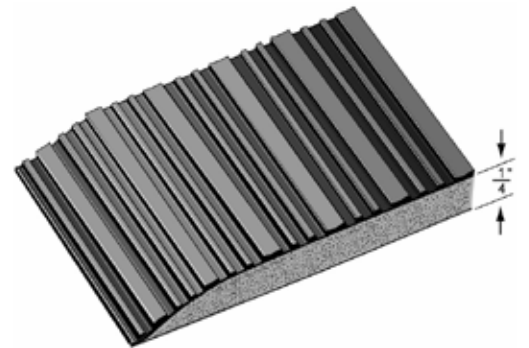
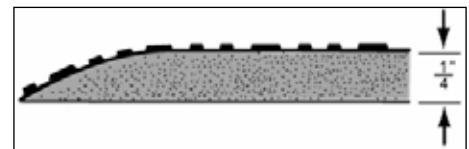
Stock No.	Sizes	App. Wt./lin.ft.
CSR-24	2' x 60'	1.5 lbs.
CSR-36	3' x 60'	2.0 lbs.
CSR-48	4' x 60'	2.6 lbs.
CSR-72	6' x 60'	4.0 lbs.

Colors: Black, Gray. (72" Black only.)

COMFORT STEP RIBBED MATTING 1/4" THICK

Stock No.	Sizes	App. Wt./lin.ft.
CSR-2536	3' X 60'	1.9 lbs.

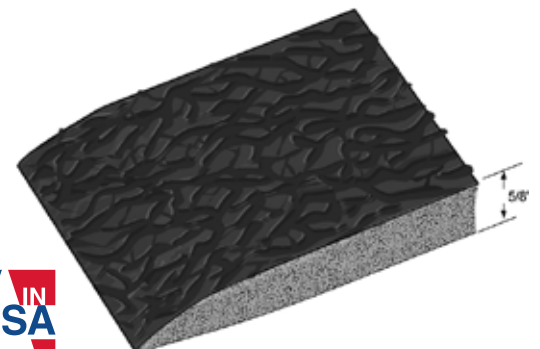
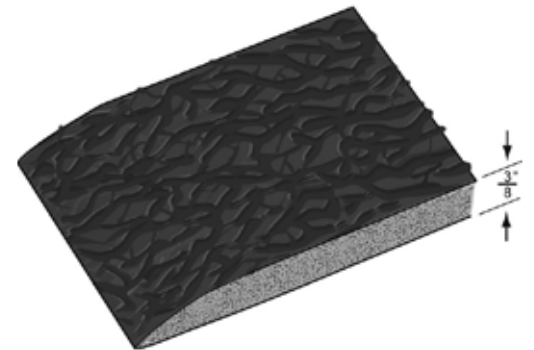
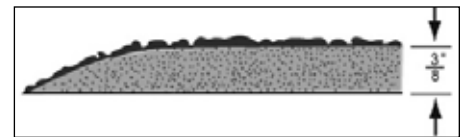
Colors: Black only.





COMFORT STEP TEXTURED

- Fatigue fighting floor mats and matting feature 3/8" or 5/8" thick closed cell vinyl foam.
- Beveled edges minimize risk of tripping and stumbling.
- Pebble-textured top surface provides sure footing.
- Helps boost productivity by relieving fatigue caused by long standing.
- Also serves to muffle distracting noises...protects feet from cold drafty floors.



COMFORT STEP TEXTURED MATS 3/8" THICK

Stock No.	Sizes	App. Wt.
CST-2436	24" x 36"	4.6 lbs.
CST-2460	24" x 60"	7.7 lbs.
CST-3660	36" x 60"	10.2 lbs.
CST-310	36" x 120"	20.4 lbs.
CST-4872	48" x 72"	16.3 lbs.

COMFORT STEP TEXTURED MATTING 3/8" THICK

Stock No.	Sizes	App. Wt./lin.ft.
CST-24	2' x 60'	1.5 lbs.
CST-36	3' x 60'	2.0 lbs.
CST-48	4' x 60'	2.6 lbs.

Colors: Black, Gray.

COMFORT STEP TEXTURED 5/8" THICK

Stock No.	Sizes	App. Wt./lin.ft.
CST-330	3'X60'	3.4 lbs.
CST-430	4'X60'	4.5 lbs.

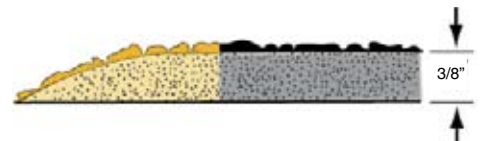
Colors: Black, Gray.





COMFORT STEP SAFETY

- Textured surface provides slip-resistant footing. Beveled edges help prevent tripping.
- Bright yellow borders increases safety awareness.
- 3/8" thick closed cell vinyl foam relieves leg and back fatigue and increases productivity.



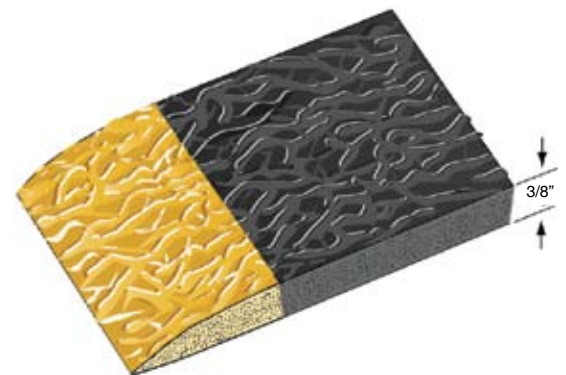
COMFORT STEP SAFETY MATS 3/8" THICK

Stock No	Sizes	App. Wt.
CSS-2436	24" x 36"	4.6 lbs.
CSS-3660	36" x 60"	10.2 lbs.
CSS-310	36" x 120"	20.4 lbs.
CSS-4872	48" x 72"	16.3 lbs.

COMFORT STEP SAFETY MATTING 3/8" THICK

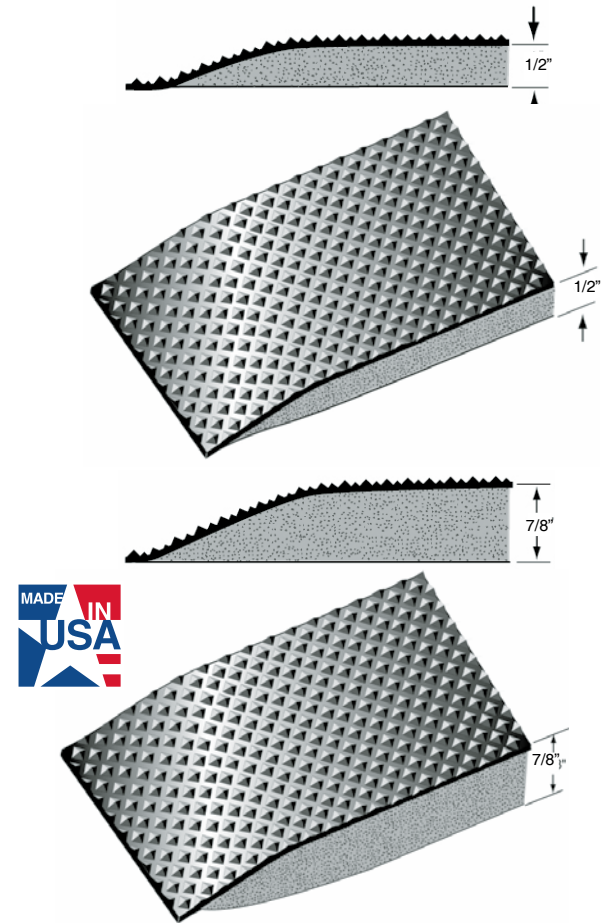
Stock No	Sizes	App. Wt./Lin.ft.
CSS-24	2' x 60'	1.5 lbs.
CSS-36	3' x 60'	2.0 lbs.
CSS-48	4' x 60'	2.6 lbs.

Colors: Black with Yellow Borders. 3/8" Thick.





PYRA-MAT™ Anti-Fatigue Mats



PYRA-MAT ANTI-FATIGUE

- All the colors in the rainbow and as soft as a cloud.
- Use these bright contemporary colors to liven up work areas in commercial and retail establishments. Designed for comfort and durability as well as brilliant colors.
- A super resilient closed cell polymeric sponge base provides exceptional buoyancy to reduce fatigue plus a non-skid pyramid surface for the toughest environments. Permanently bonded to your choice of a 3/8" or 3/4" resilient closed cell polymeric sponge base, overall thickness is 1/2" or 7/8". Two year conditional-non-prorated warranty insures against cracking or fracturing.



Burgundy



Dark Gray



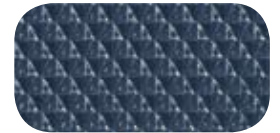
Black



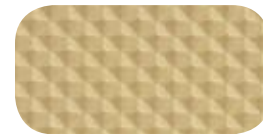
Brown



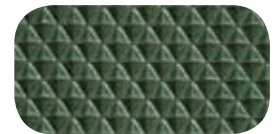
Light Gray



Navy Blue



Tan



Forest Green

PYRA-MAT ANTI-FATIGUE

For 7/8" mats, add "DS" to stock number

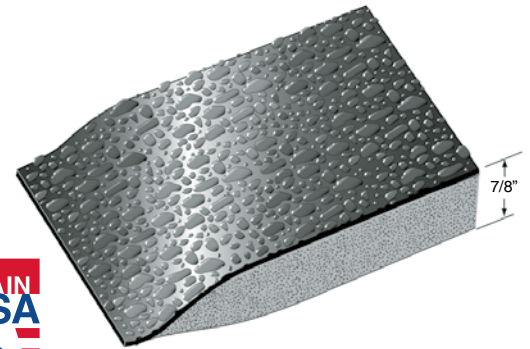
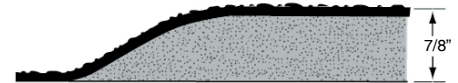
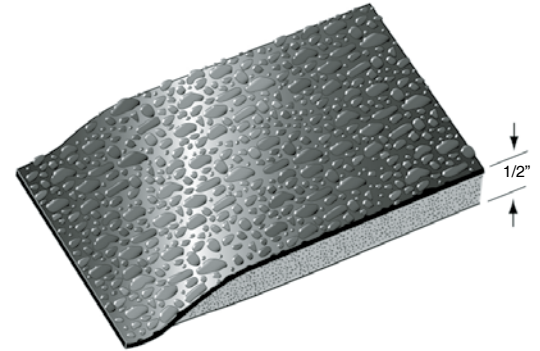
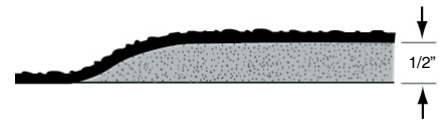
Stock No.	Size	Weight Ea. 1/2"	Weight 7/8"
PM-2436	2' x 3'	8.0 lbs.	12.0 lbs. ea.
PM-3660	3' x 5'	22.5 lbs.	30.0 lbs. ea.

CUSTOM SIZES-available in lengths up to 75 lin. Ft.

Stock No.	Widths	Wt./Lin. Ft. 1/2"	Wt./Lin. Ft. 7/8"
PM-R24	24"	3.0 lbs./Ln. Ft.	4.0 lbs/Ln. Ft.
PM-R36	36"	4.5 lbs./Ln. Ft.	6.0 lbs/Ln. Ft.
PM-R48	48"	6.0 lbs./Ln. Ft.	8.0 lbs/Ln. Ft.

Colors: Black, Burgundy, Light Gray, Dark Gray, Brown, Tan, Navy Blue, Forest Green.

7/8" Thick/Double Sponge (DS)



RHINO HIDE®

Beautiful high-gloss pebble surface of non-porous Koroseal vinyl. Full 1/8" thick top surface provides resistance to punctures from heels, cart traffic, tears, cuts, and is over three times more abrasion resistant than competing products. A super resilient closed cell polymeric sponge base provides exceptional buoyancy to reduce fatigue plus a surface for the toughest environments. Permanently bonded to a 3/8" or 3/4" resilient sponge base, overall thickness is 1/2" or 7/8". Two year conditional, non-prorated warranty insures against cracking or fracturing.



RHINO HIDE® ANTI-FATIGUE MATS

For 7/8" mats, add "DS" to stock number

Stock No.	Sizes	Weight Ea. 1/2"	Weight Ea. 7/8"
RH-2436	2' x 3'	10.0 lbs.	12.0 lbs.
RH-3660	3' x 5'	25.0 lbs.	30.0 lbs.

CUSTOM SIZES-available in lengths up to 75 lin. Ft.

Stock No.	Widths	Wt./Lin. Ft. 1/2"	Wt./Lin Ft. 7/8"
RH-24	24"	3.25 lbs.	4.0 lbs.
RH-36	36"	5.00 lbs.	6.0 lbs.
RH-48	48"	6.50 lbs.	8.0 lbs.
RH-72	72" SEAMED	10.00 lbs.	12.0 lbs.
RH-96	96" SEAMED	13.00 lbs.	16.0 lbs.

Colors: Congo Green, Sahara Sand (Tan), Serengeti Sunrise (Red), Kenya Trail (Brown), Nigerian Night (Black), Nile Mist (Gray).

7/8" Thick/Double Sponge (DS)



Serengeti Sunrise



Nigerian Night



Nile Mist



Congo Green



Sahara Sand



Kenya Trail



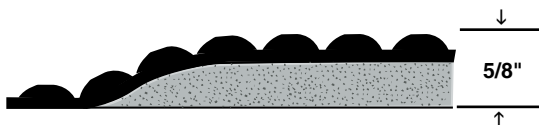
REFLEX® THE INTERACTIVE ANTI-FATIGUE MAT

- Interactive mat is a term describing the Reflex anti-fatigue mat whose input and output are interconnected producing a combination of resilience and stimulation working together for an effect that rejuvenates as energy is expended.
- Reflex Anti-Fatigue Mats provide this *dual* action blend with buoyant polymer sponge and vertical column support domes.
 - The super resilient closed-cell polymeric sponge base encourages a subtle and constant series of small adjustments to leg and calf muscles. Adjusting to the flexibility of the mat increases blood flow by the interaction between muscles and veins, resulting in improved circulation and reduced fatigue.
 - The solid domed Reflex surface is compliant, to the shape of the foot, providing equal support of the entire footprint; simultaneously aggressive, providing upward vertical force and simple manipulation of the feet. This relieves tension, stimulates circulation and breaks up patterns of stress in all areas of the body to an amazing extent.
- Relating to the external conditions of the workplace, productivity gains through the use of anti-fatigue mats are second only to heating and air conditioning. The bonus is safety and well-being.
- 5 year warranty.
- Reflex Anti-Fatigue Mats are available in two thicknesses:



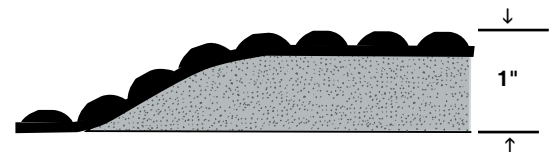
Heavy Duty - 5/8" thick mats

Recommended in areas where tasks require personnel to move around in large work stations.

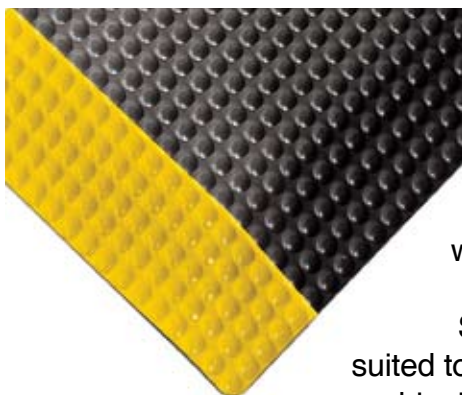


Super Duty - 1" thick mats

The anti-fatigue mat of choice in standing work stations delivering unparalleled comfort.



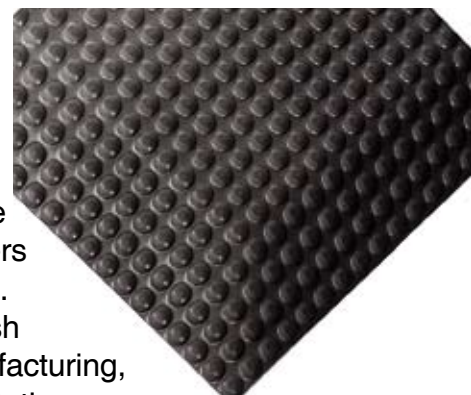
BLACK/YELLOW



INDUSTRIAL

High-Tech non-directional surface with safety yellow borders to highlight work areas. Solid Black is a flat finish suited to assembly lines, manufacturing, shipping and packing work stations.

INDUSTRIAL BLACK



*** Patent D543765**



REFLEX ANTI-FATIGUE

For 1" mats, Add "DS" to stock number

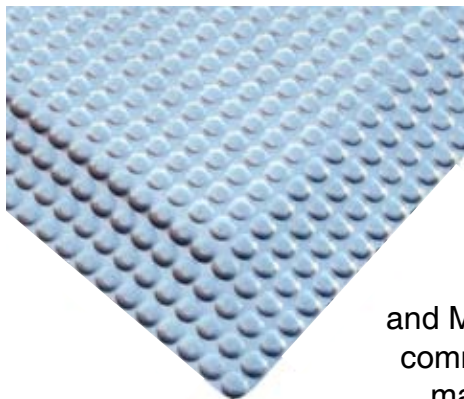
Stock No.	Sizes	Weight Ea. 5/8"	Weight Ea. 1"
RFLX2436	2' x 3'	9.0 lbs.	10.2 lbs.
RFLX3660	3' x 5'	22.0 lbs.	28.0 lbs.

Custom Sizes - available in lengths up to 75 lin. ft.

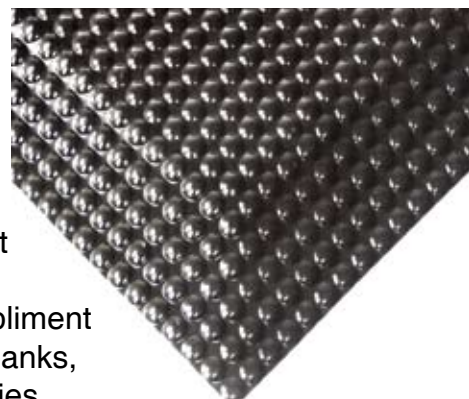
Stock No.	Width	Weight/Lin.Ft. 5/8"	Weight/Lin. Ft. 1"
RFLX24	24"	3.0 lbs.	3.8 lbs.
RFLX36	36"	4.5 lbs.	5.7 lbs.
RFLX48	48"	6.0 lbs.	7.6 lbs.
RFLX60	60"	7.5 lbs.	9.5 lbs.
RFLX72	72" Seamed	9.0 lbs.	11.4 lbs.
RFLX96	96" Seamed	12.0 lbs.	15.2 lbs.

Commercial Colors: Black Glossy and Metallic. **Industrial Colors:** Industrial Black, Black/Yellow.

METALLIC



BLACK GLOSSY

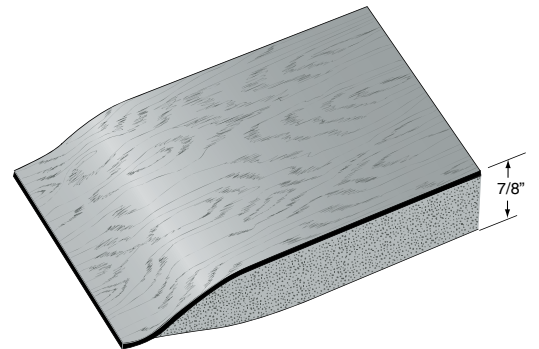
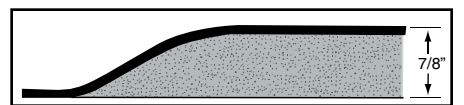
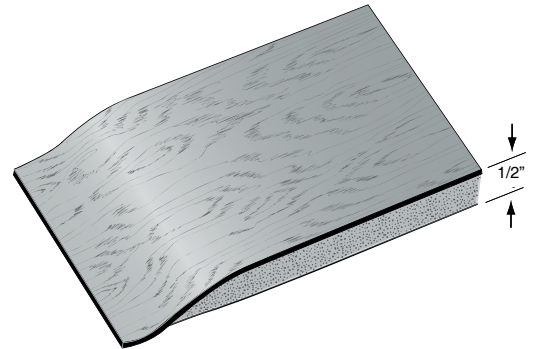
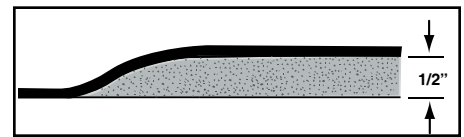


COMMERCIAL

Same physical properties as our industrial series except with the Glossy Black and Metallic surface to compliment commercial offices, retail, banks, mail rooms and laboratories.



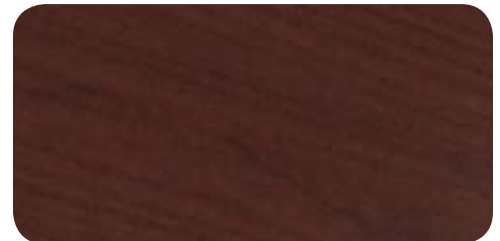
SOFT WOODS™ Anti-Fatigue Mats



SOFT WOODS

- The beautiful Soft Woods anti-fatigue mat establishes a new standard of beauty in anti-fatigue mats.
- The rich look of hardwood flooring enhances your work place while providing the simplest and most effective way to reduce fatigue and stress.
- Soft Woods anti-fatigue mats are available in two styles. The single sponge style is 1/2" thick and the double sponge is a full 7/8" thick, double the thickness of ordinary mats.
- Double sponge mats by Rhino are the anti-fatigue mats of choice, producing the incredibly soft and resilient rebound properties needed in a rigorous commercial or retail environment.

WALNUT



WILD CHERRY



SOFT WOODS ANTI-FATIGUE MATS

For 7/8" mats, add "DS" to stock number

Stock No.	Size	Weight Ea. 1/2"	Weight 7/8"
SW-2436	2' x 3'	7.5 lbs.	8.5 lbs. ea.
SW-3660	3' x 5'	17.0 lbs.	21.0 lbs. ea.

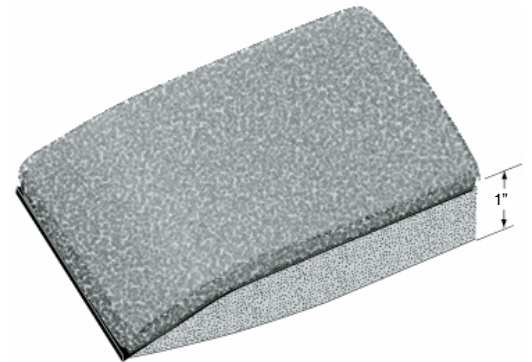
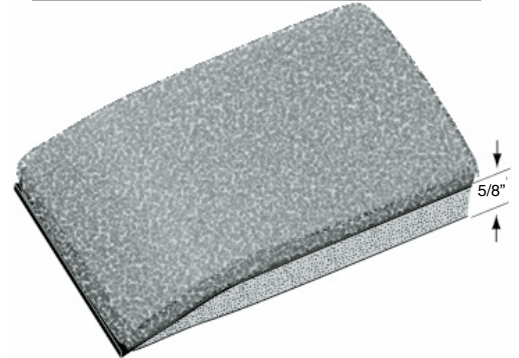
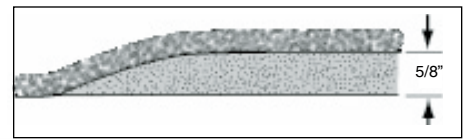
CUSTOM SIZES-available in lengths up to 60 lin. Ft.

Stock No.	Widths	Wt./Lin. Ft. 1/2"	Wt./Lin. Ft. 7/8"
SW-24	24"	2.4 lbs./Ln. Ft.	2.8 lbs./Ln. Ft.
SW-36	36"	3.6 lbs./Ln. Ft.	4.2 lbs./Ln. Ft.
SW-48	48"	4.8 lbs./Ln. Ft.	5.6 lbs./Ln. Ft.

Colors: Wild Cherry, Walnut.

7/8" Thick/Double Sponge (DS)





TUFF PLUSH

- Tuff Plush has maintained popularity for many years and remains a favorite in commercial settings, Retail, Banks, Pharmacies, Mail Rooms, Service Counters, etc.
- Now available in nine colors to match any decor, Tuff Plush is as comfortable as it is aesthetically pleasing.
- Do not let the elegant look of this mat fool you. Tuff Plush provides resistance to punctures from heels, cart traffic tears and cuts and is permanently bonded to the same closed cell polymeric sponge base as our industrial grade mats.
- Easily cleaned with a vacuum.
- Tuff Plush mats are available in two styles. The single sponge style is 5/8" thick and the double sponge is a full 1" thick, double the thickness of ordinary mats.
- Double Sponge Tuff Plush Mats are the anti-fatigue mats of choice, delivering unparalleled comfort.



Blue



Charcoal



Beige



Solid Navy



Red/Black



Hunter Green



Walnut



Solid Black



Solid Gray

TUFF PLUSH MATS

For 1" mats, add "DS" to stock number

Stock No.	Sizes	Wt. Ea. 5/8"	Wt. Ea. 1"
TP-2434	24" x 34"	8.4 lbs.	9.6 lbs.
TP-3460	34" x 60"	21.0 lbs.	24.0 lbs.

CUSTOM SIZES-available in lengths up to 60 lin. Ft.

Stock No.	Widths	Wt./Lin. Ft. 5/8"	Wt./Lin. Ft. 1"
TP-34	34"	4.2 lbs.	4.8 lbs.
TP-44	44"	5.6 lbs.	6.4 lbs.
TP-68	68"	8.4 lbs.	9.6 lbs.

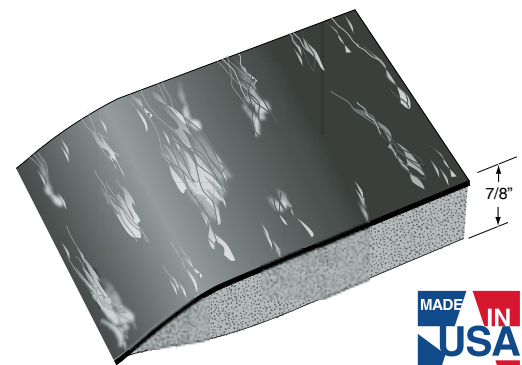
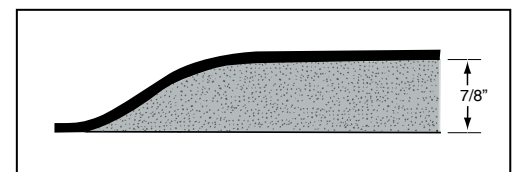
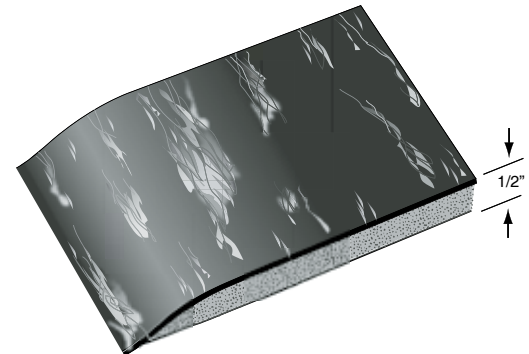
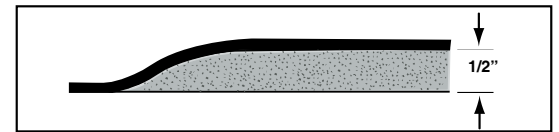
Colors: Beige, Blue, Charcoal, Hunter Green, Solid Black, Solid Gray, Walnut, Red/Black, Solid Navy.

1" Thick Double Sponge (DS). 3% Variance.





DOCTOR STAND-EZE™ Anti Fatigue Mats



DOCTOR STAND-EZE™

- An Anti-Fatigue Mat with attractive smooth marbled surface and non-porous encapsulated construction that cleans up easily with most disinfecting agents, meeting the challenge of laboratory and medical environments.
- Doctor Stand-Eze is ergonomically designed to stimulate blood flow and prevent fatigue. It displays excellent physical properties such as tensile strength, tear resistance and cleanability.
- Doctor Stand-Eze Anti-Fatigue mats are available in two styles. The single sponge style is 1/2" thick and the double sponge is a full 7/8" thick, double the thickness of ordinary mats. The base is sealed in a non-porous envelope that is permanently bonded to the backside.
- Three year unconditional, non-prorated warranty insures against cracking or fracturing.

DOCTOR STAND-EZE ANTI-FATIGUE

For 7/8" mats add "DS" to stock number

Stock No.	Size	Weight Ea. 1/2"	Weight Ea. 7/8"
DSE-2436	2' x 3'	9.0 lbs.	12.0 lbs.
DSE-3648	3' x 4'	18.0 lbs.	24.0 lbs.
DSE-3660	3' x 5'	22.0 lbs.	30.0 lbs.

CUSTOM SIZES-available in lengths up to 20 lin. Ft.

Stock No.	Width	Wt./Lin.Ft. 1/2"	Wt./Lin.Ft. 7/8"
DSE-36	36"	4.2 lbs.	4.8 lbs.

Colors: Green, Blue, Brown, Tan, Charcoal, Grey, Sandalwood, Black/White, Solid Black.



Blue



Solid Black



Brown



Black/White



Tan



Gray



Charcoal

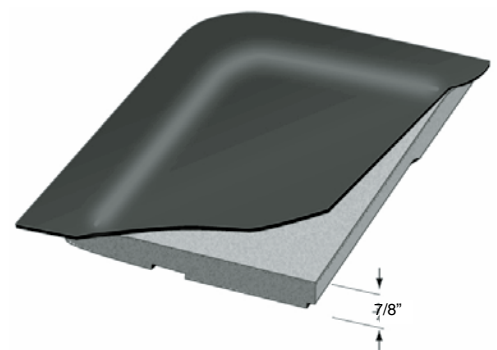
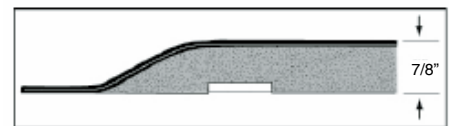


Sandalwood



MULTI-FLEX ANTI-FATIGUE

- The Multi-Flex combination of a Performance Rated Polymeric top surface with a Multi-Flex sponge base provide the simplest and most effective way to reduce standing fatigue and stress.
- This engineered top surface is extremely durable providing resistance to punctures from heels, cart traffic, tears and cuts. At the same time the surface remains soft and pliant allowing exceptional sensitivity to the Multi-Flex sponge base.
- Multi-Flex is a super resilient polymeric sponge base with staggered air channels that create a unique multi-density surface. This encourages subtle weight shift and movement of leg and calf muscles which in turn promotes blood flow, resulting in improved circulation and reduced fatigue.
- Improving your circulation and muscle tone reduces the risk of developing varicose veins or increasing the severity of an existing condition. Remember that good circulation is the essence of a healthful life.
- Multi-Flex Anti-Fatigue mats are a full 7/8" thick, double the thickness of ordinary mats.
- Three year, conditional non-prorated warranty insures against cracking or fracturing.
- Patent pending.

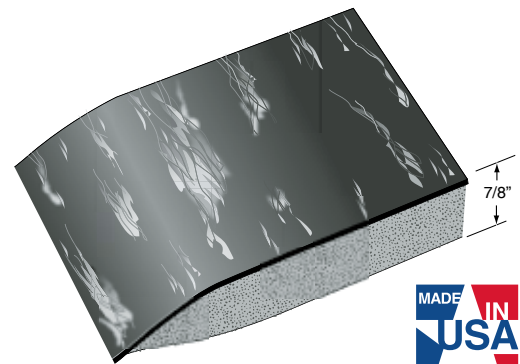
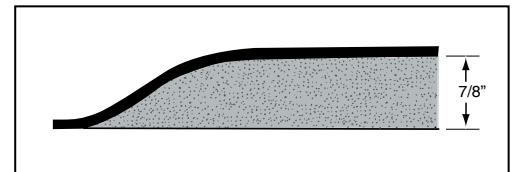
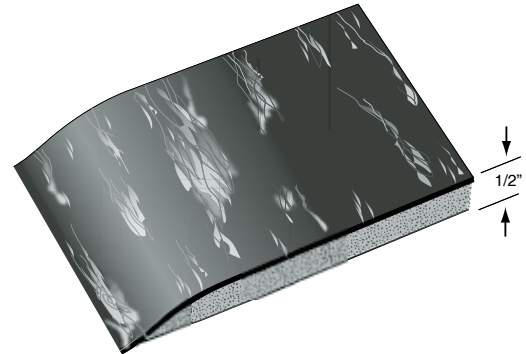
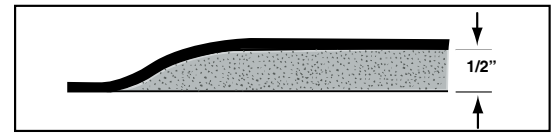


MULTI-FLEX Anti Fatigue Mats

Stock No.	Size	Weight Ea.
MF-2436	2' x 3'	9.0 lbs
MF-3660	3' x 5'	23.0 lbs
MF-310	3' x 10'	45.0 lbs
MF-320	3' x 20'	90.0 lbs
CUSTOM SIZES – available in Lengths up to 75 Ln. Ft.		
Stock No.	Widths	Weight/ Lin.Ft.
MF-36	36"	4.5 lbs
MF-48	48"	6.0 lbs
Color: Black Only. 7/8" Thick.		



MARBLEIZED TILE TOP™ Anti-Fatigue Mats



MARBLEIZED TILE TOP ANTI-FATIGUE

- A matting that provides comfort for people who stand at counters, copiers and teller stations widely used by banks and office personnel.
- Rhino Marbleized mattings are a superior value with puncture resistance that far exceeds comparable rubber products by up to 90%.
- This product is constructed of a 3/32" heavy duty marbleized tile surface, permanently bonded to your choice of a 3/8" or 3/4" resilient closed cell polymer sponge base. Overall thickness is 1/2" or 7/8".
- Tile top is available in standard stock sizes and in roll lengths.
- Edges will be beveled.



Blue



Solid Black



Brown



Black/White



Tan



Gray



Charcoal



Sandalwood

MARBLEIZED TILE TOP ANTI-FATIGUE MATS

For 7/8" mats, add "DS" to stock number

Stock No.	Sizes	Weight Ea. 1/2"	Weight Ea. 7/8"
TT-1830	18" x 30"	4.5 lbs.	5.5 lbs.
TT-1848	18" x 48"	7.5 lbs.	8.5 lbs.
TT-2436	24" x 36"	7.5 lbs.	8.5 lbs.
TT-3660	36" x 60"	17.0 lbs.	21.0 lbs.

CUSTOM SIZES – available in lengths up to 60 lin. Ft.

Stock No.	Widths	Wt./Lin. Ft. 1/2"	Wt./Lin. Ft. 7/8"
TT-R24	24"	2.4 lbs.	2.8 lbs.
TT-R36	36"	3.6 lbs.	4.2 lbs.
TT-R48	48"	4.8 lbs.	5.6 lbs.
TT-R60	60"	6.0 lbs.	7.0 lbs.
TT-R72	72" Seamed	7.2 lbs.	8.4 lbs.
TT-R96	96" Seamed	9.6 lbs.	11.2 lbs.

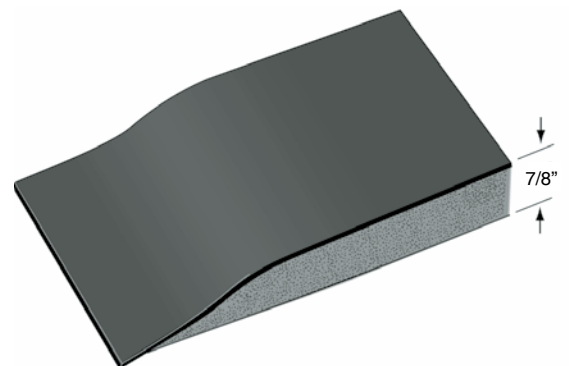
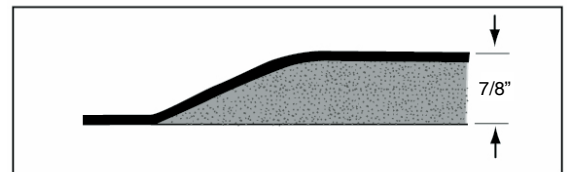
Colors: Brown, Gray, Tan, Charcoal, Sandalwood, Blue, Black/White. (60" in Solid Black only.)

7/8 " Thick/Double Sponge (DS)



XTRA-FLEX

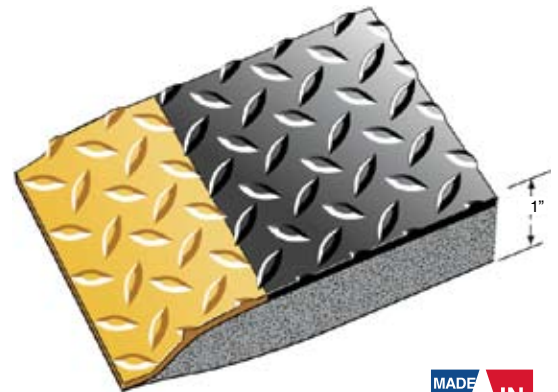
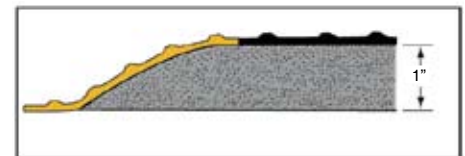
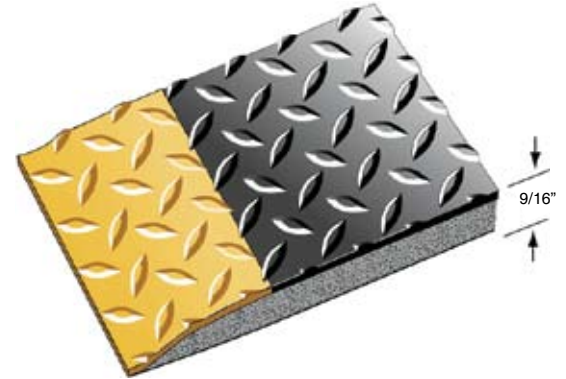
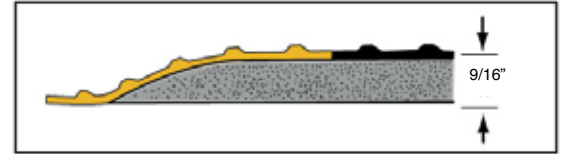
- Xtra-Flex was developed to give a significant advantage when competing with a polyurethane product. The challenge was manufacturing a softer mat with the necessary rebound properties while maintaining the wear characteristics that are the hallmark of Rhino Mats.
- Every foot movement on an Xtra-Flex mat is absorbed by the Xtra-Flex Microcellular Foam base to reduce any impact effects. It springs back to deliver that small amount of energy back to the feet and provides a vitality that stimulates good circulation, the essence of a healthful life.
- The Xtra-Flex rebound properties and resiliency are backed by a five year performance guarantee.
- Xtra-Flex anti-fatigue mats are a full 7/8" thick, double the thickness of ordinary mats.



XTRA-FLEX		
Stock No.	Size	Weight Ea.
XF-2436	2' x 3'	9.0 lbs.
XF-3660	3' x 5'	23.0 lbs.
XF-310	3' x 10'	45.0 lbs.
XF-320	3' x 20'	90.0 lbs.
CUSTOM SIZES – AVAILABLE IN LENGTHS UP TO 75 LN. FT.		
Stock No.	Widths	Weight /Lin. Ft.
XF-24	24"	3.0 lbs.
XF-36	36"	4.4 lbs.
XF-48	48"	5.5 lbs.
XF-60	60"	7.5 lbs.
Color: Black Only. 7/8" Thick.		



DIAMOND PLATE™ Anti-Fatigue Mats



DIAMOND PLATE ANTI-FATIGUE

- Diamond Plate Anti-Fatigue by Rhino is the benchmark for comparison to all other Industrial Anti-Fatigue Mats. This strong performer suffers no deterioration from weathering and ozone exposure and is self-extinguishing when tested in accordance with FMVSS-302. These mats offer excellent durability following exposure to many organic and inorganic industrial chemicals.
- Shop and compare, Rhino's Diamond Plate Anti-Fatigue far exceeds the competition with it's closed cell polymeric sponge base that produces the incredibly soft and resilient rebound properties needed in a rigorous manufacturing environment.
- This industrial standard is available in two styles. The Heavy duty style is 9/16" thick and the Super Duty is a full 1" thick. Both styles are available in individual mats or full roll lengths of 24", 36", 48", 60", 72", and 96" widths.
- 3 year warranty.

DIAMOND PLATE TILE TOP ANTI-FATIGUE MATS

Stock No.	Sizes	Weight Ea. 9/16"	Weight Ea. 1"
DTT2436	2' x 3'	9.0 lbs.	10.0 lbs.
DTT3660	3' x 5'	19.0 lbs.	22.0 lbs.
Custom Sizes - available in lengths up to 75 lin. ft.			
Stock No.	Width	Weight/Lin.Ft. 9/16"	Weight/Lin Ft. 1"
DTT24	24"	2.2 lbs.	2.6 lbs.
DTT36	36"	3.3 lbs.	3.9 lbs.
DTT48	48"	4.4 lbs.	5.2 lbs.
DTT60	60"	5.5 lbs.	6.5 lbs.
DTT72	72" Seamed	6.6 lbs.	7.8 lbs.
DTT96	96" Seamed	8.8 lbs.	10.4 lbs.
Full Rolls	Sizes	Weight Ea. 9/16"	Weight Ea. 1"
DTT275	2' x 75'	170.0 lbs.	230.0 lbs.
DTT375	3' x 75'	248.0 lbs.	340.0 lbs.
DTT475	4' x 75'	342.0 lbs.	450.0 lbs.
DTT575	5' x 75'	415.0 lbs.	500.0 lbs.
DTT675	6' x 75' Seamed	500.0 lbs.	600.0 lbs.
Color: Black, Solid Gray, Gray/Yellow, Black/Yellow. 60" Black & Black/Yellow only. 1" Thick/Double Sponge (Add DS to Stock No.)			



Black/Yellow



Gray/Yellow



Black



Gray